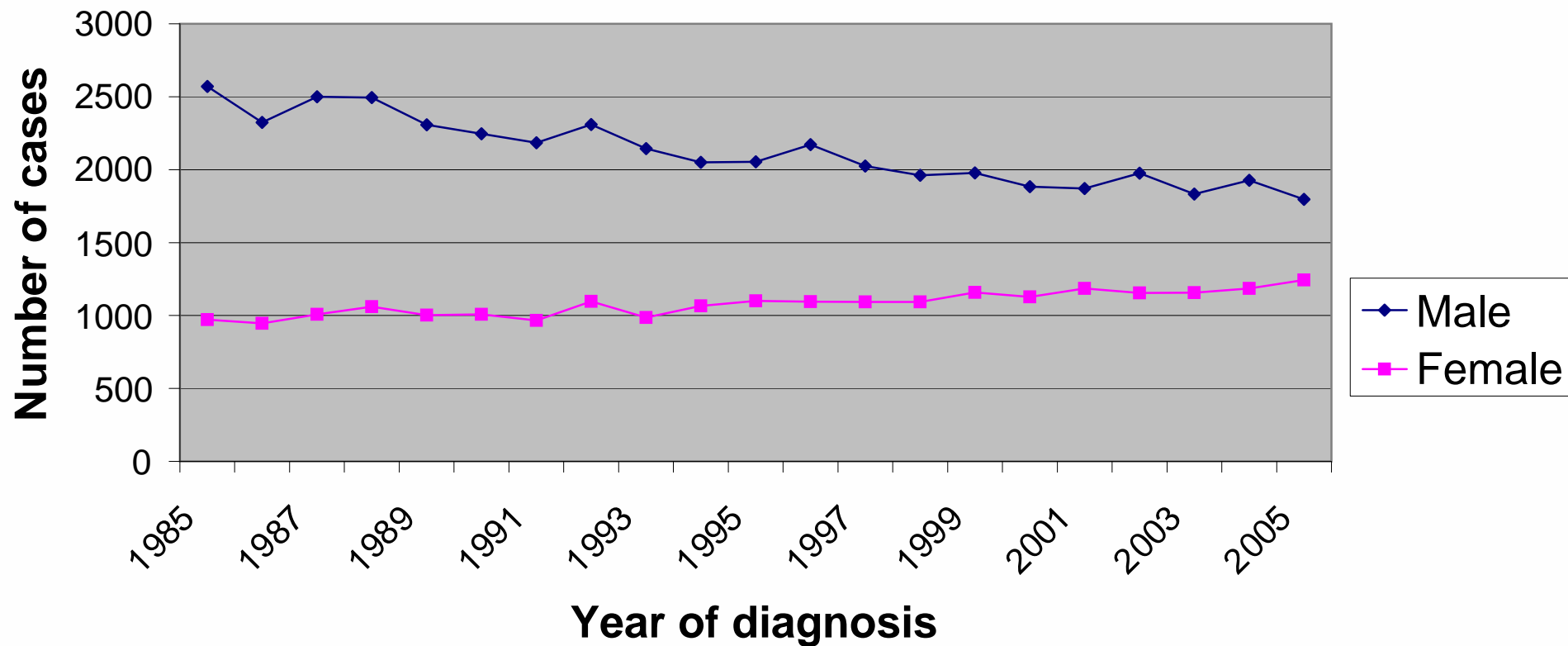
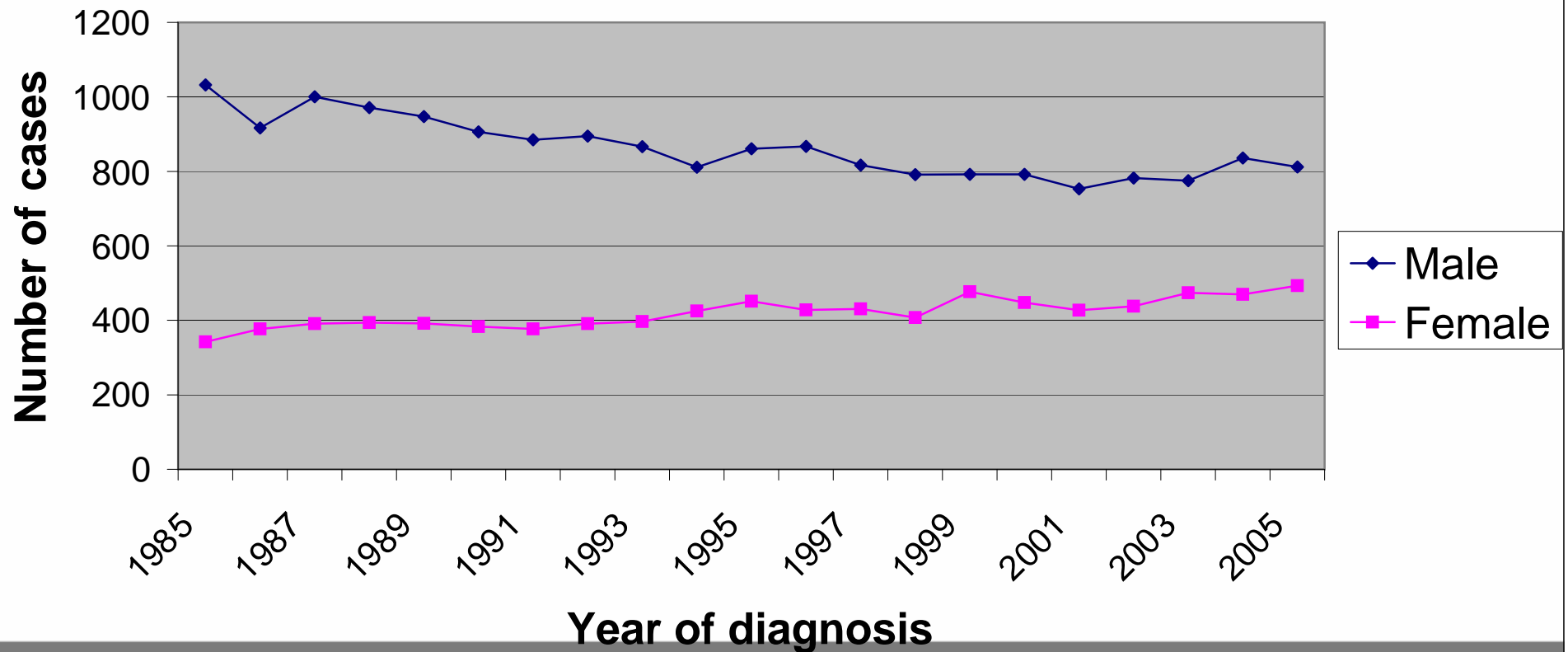


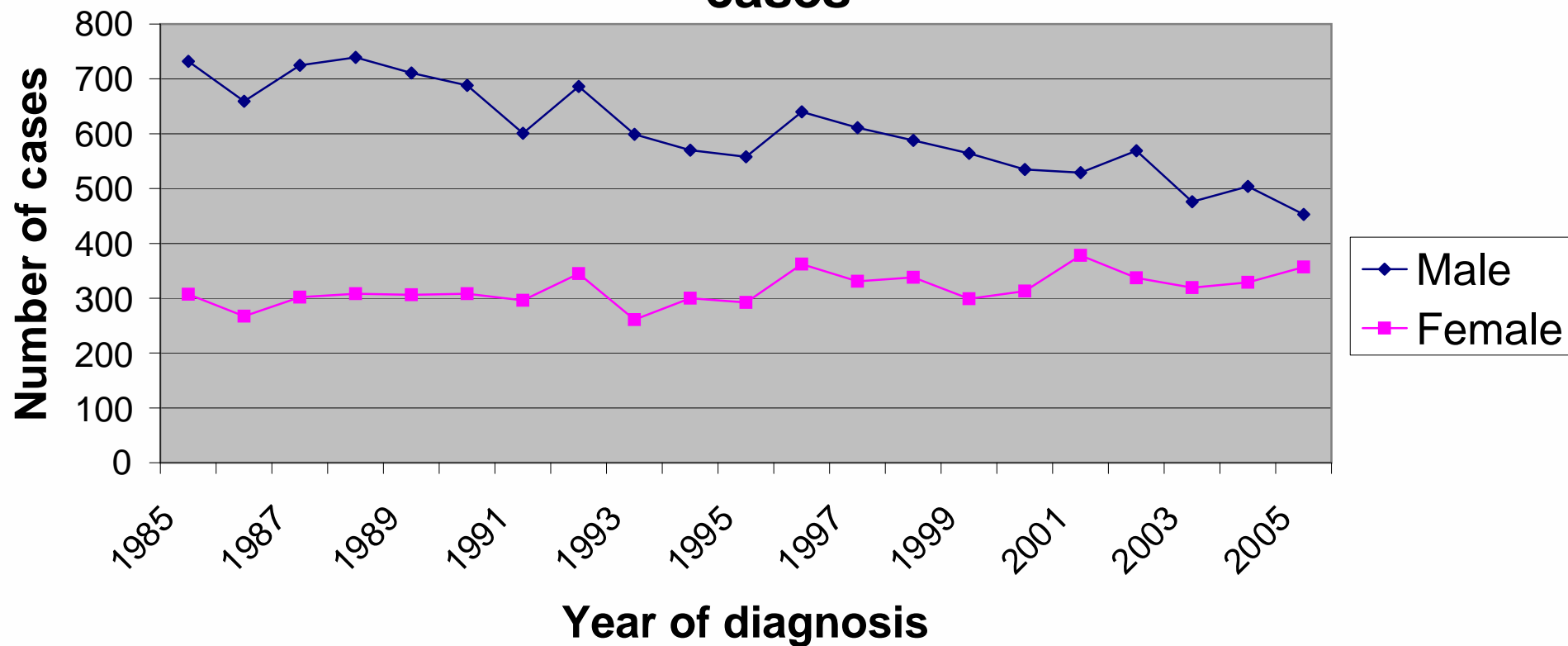
## Incidence of lung, trachea and bronchus cancer in the East of England: Number of cases



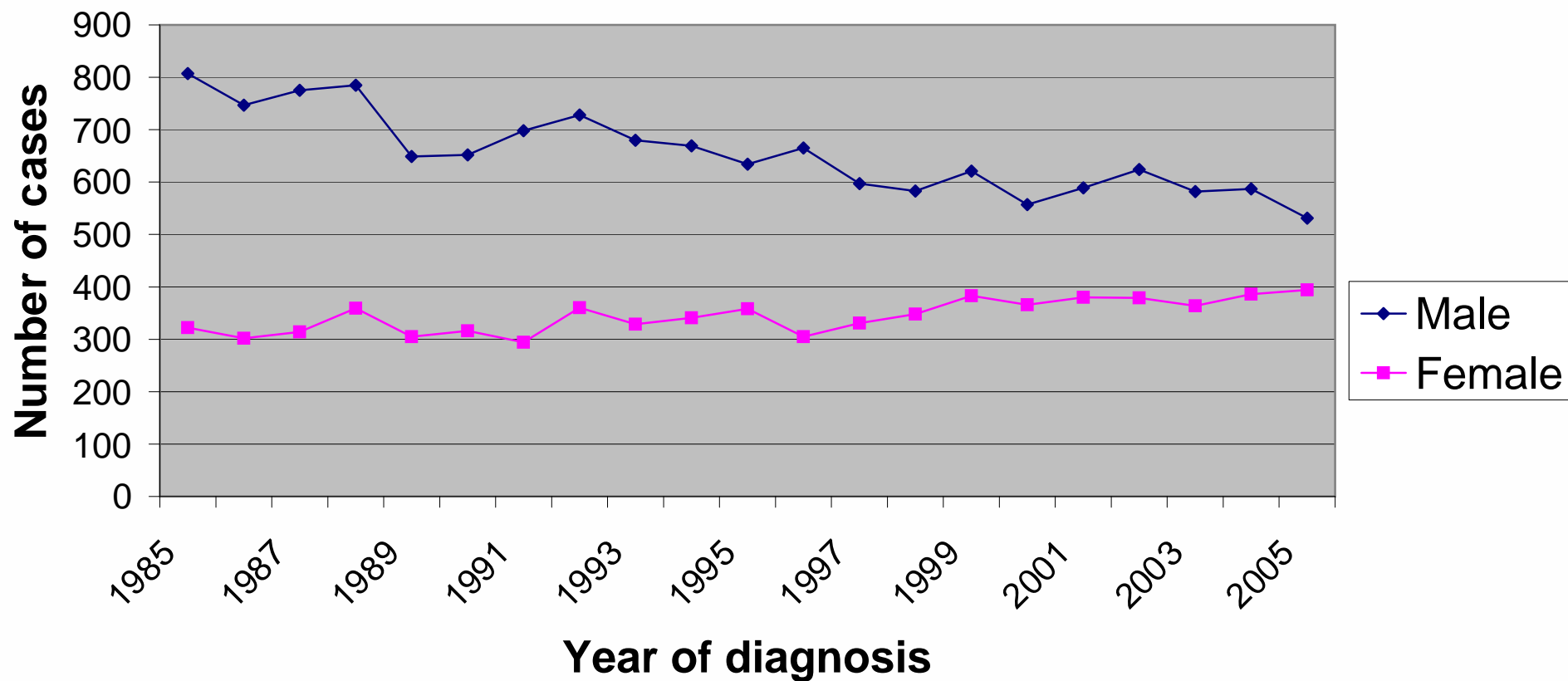
## Incidence of lung, trachea and bronchus cancer in Norfolk, Suffolk and Cambridgeshire: Number of cases



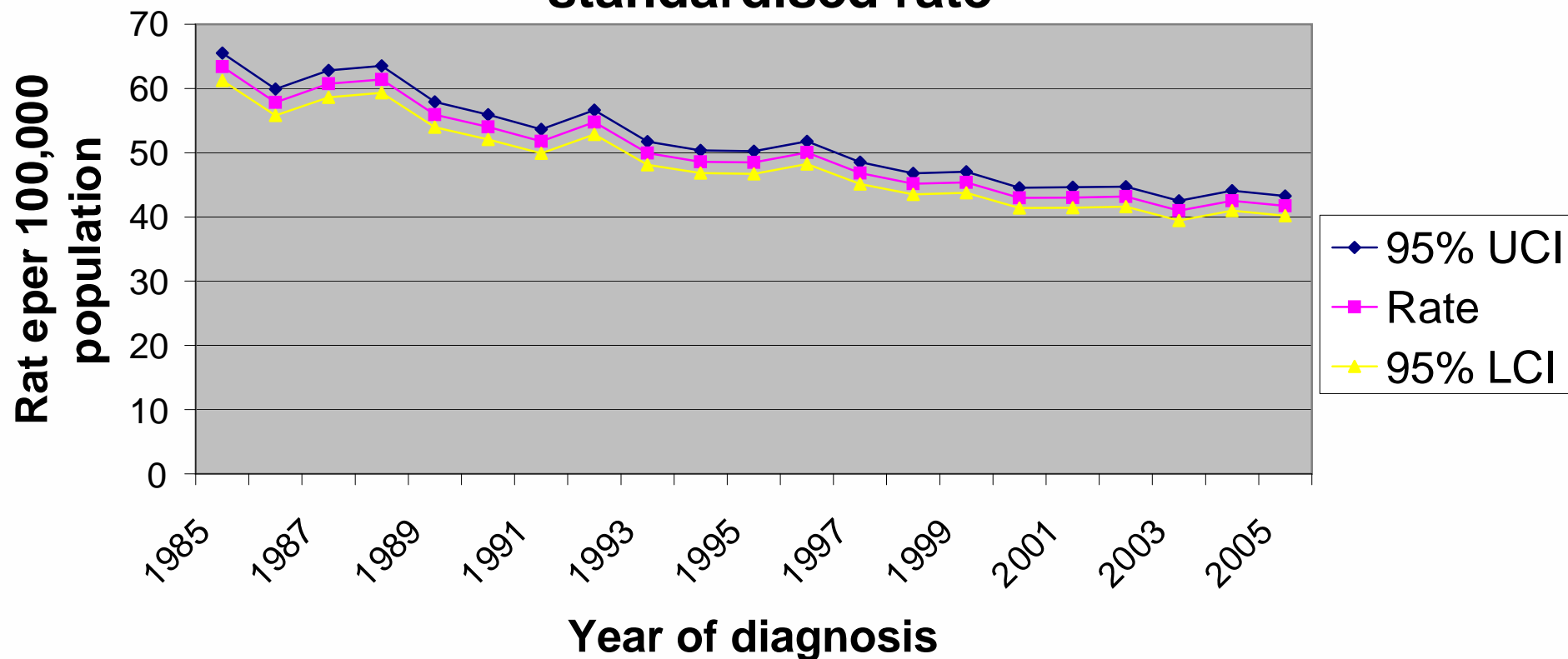
## Incidence of lung, trachea and bronchus cancer in Bedfordshire and Hertfordshire: Number of cases



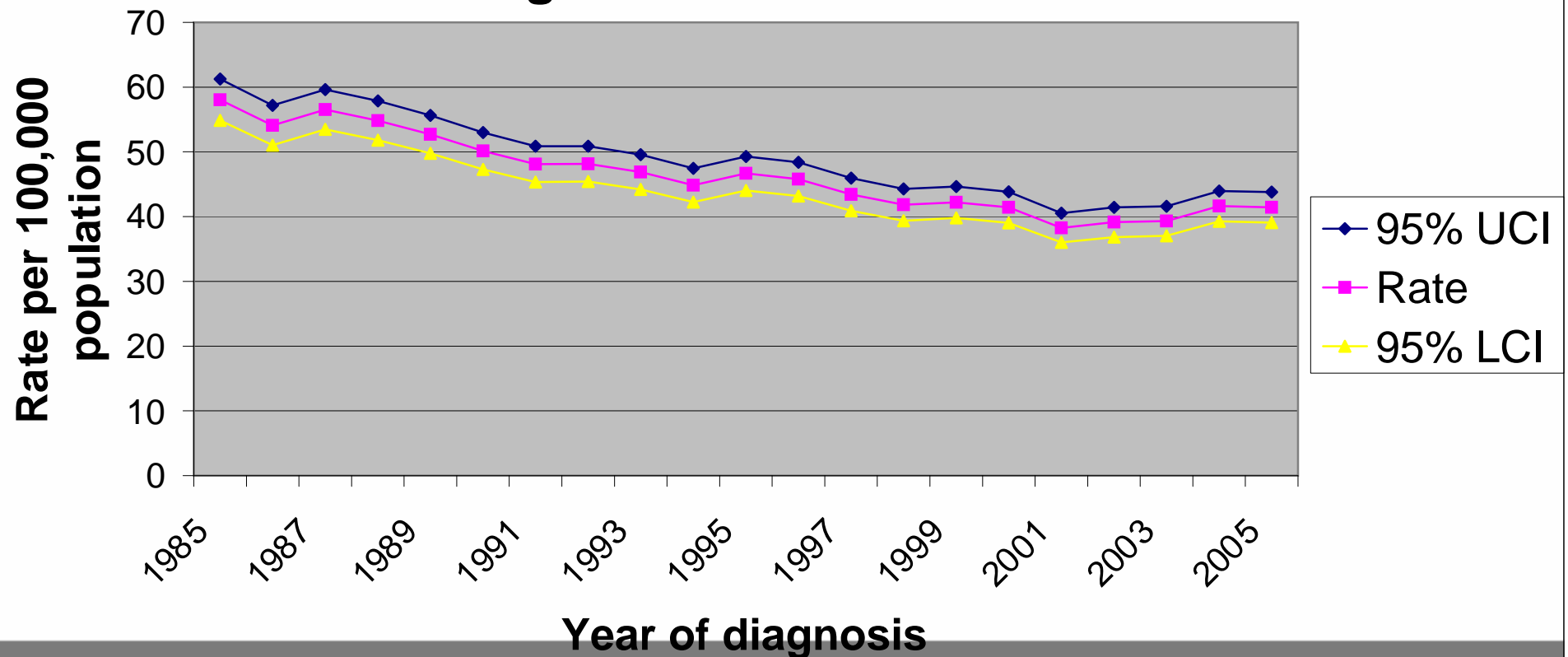
## Incidence of lung, trachea and bronchus cancer in Essex: Number of cases



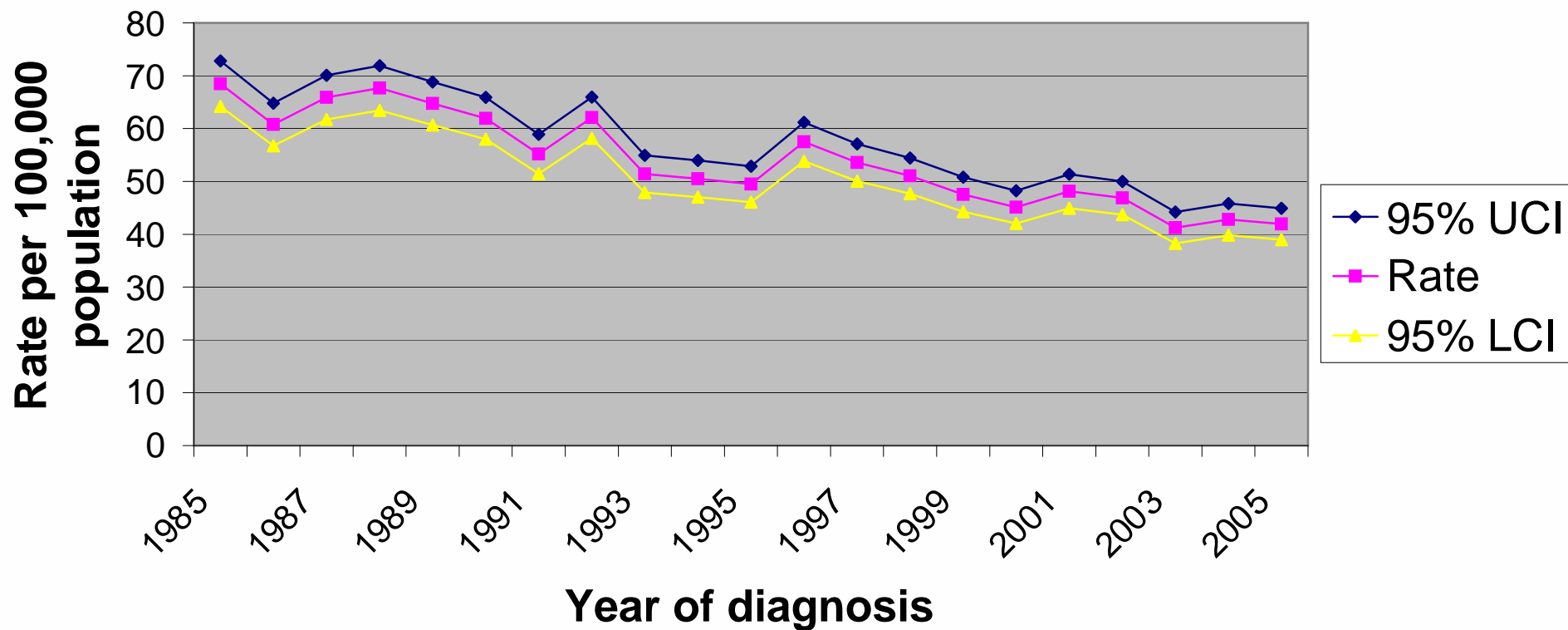
## Incidence of lung, trachea and bronchus cancer in the East of England: European age standardised rate



## Incidence of lung, trachea and bronchus cancer in Norfolk, Suffolk and Cambridgeshire: European age standardised rate



## Incidence of lung, trachea and bronchus cancer in Bedfordshire and Hertfordshire: European age standardised rate



## Incidence of lung, trachea and bronchus cancer in Essex: European age standardised rate

