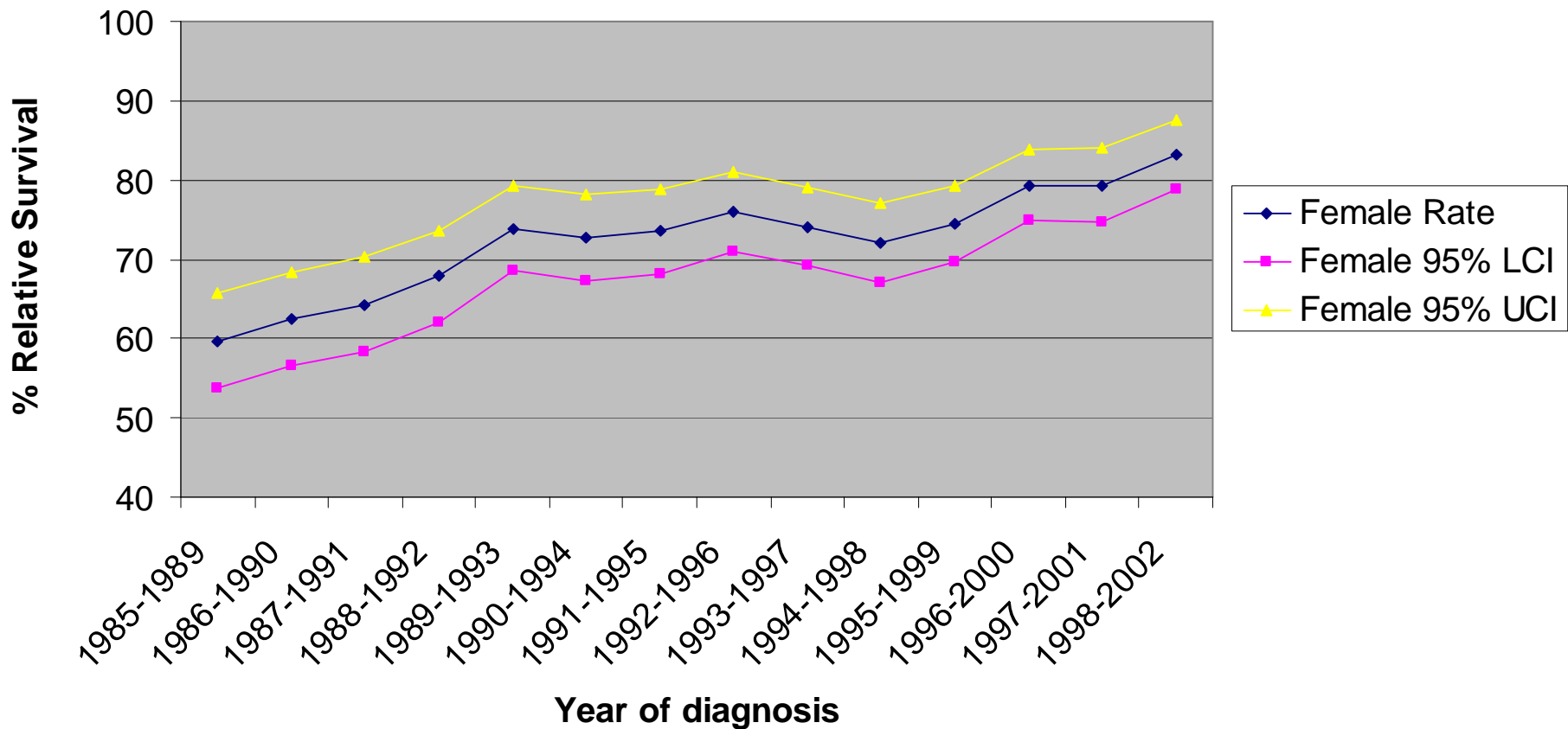
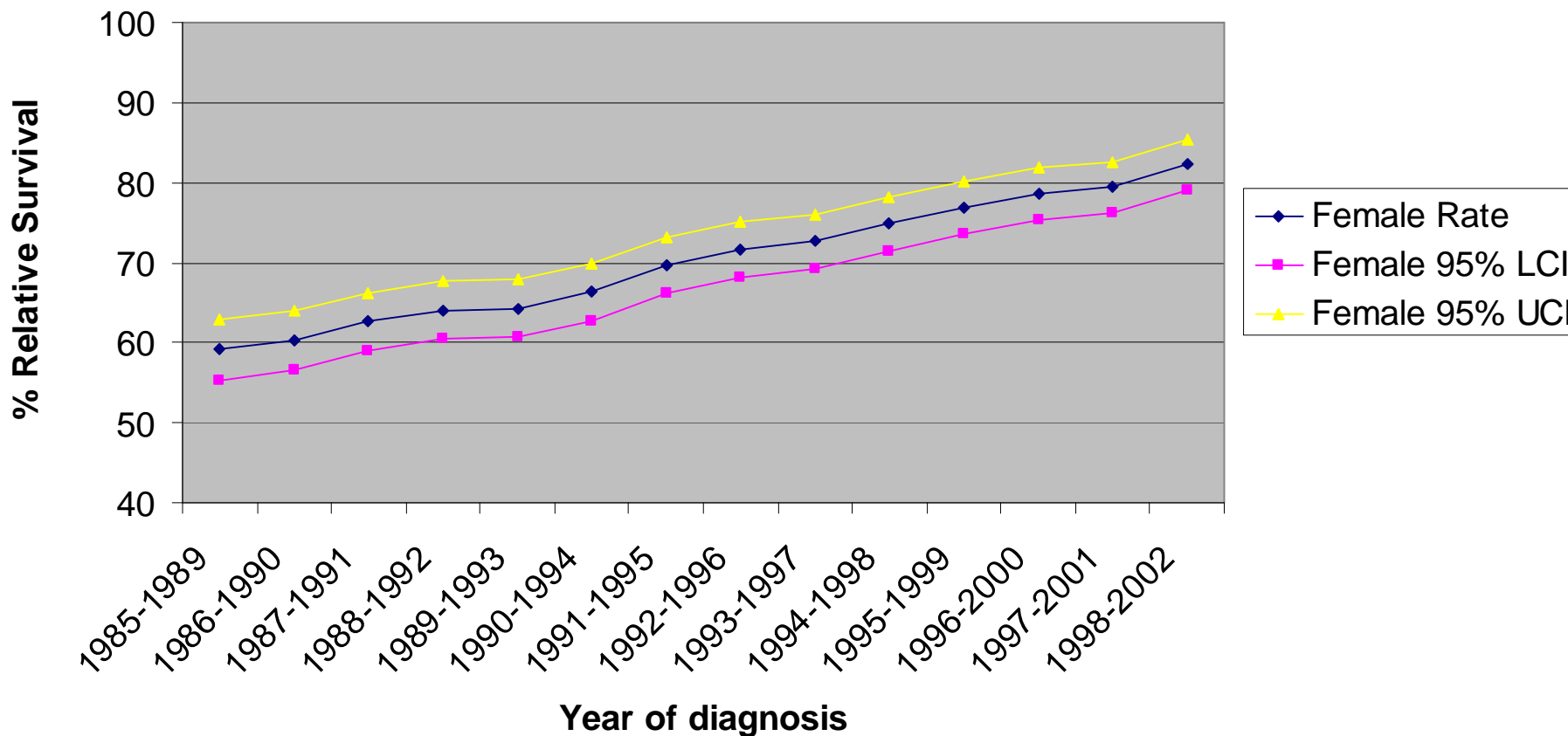


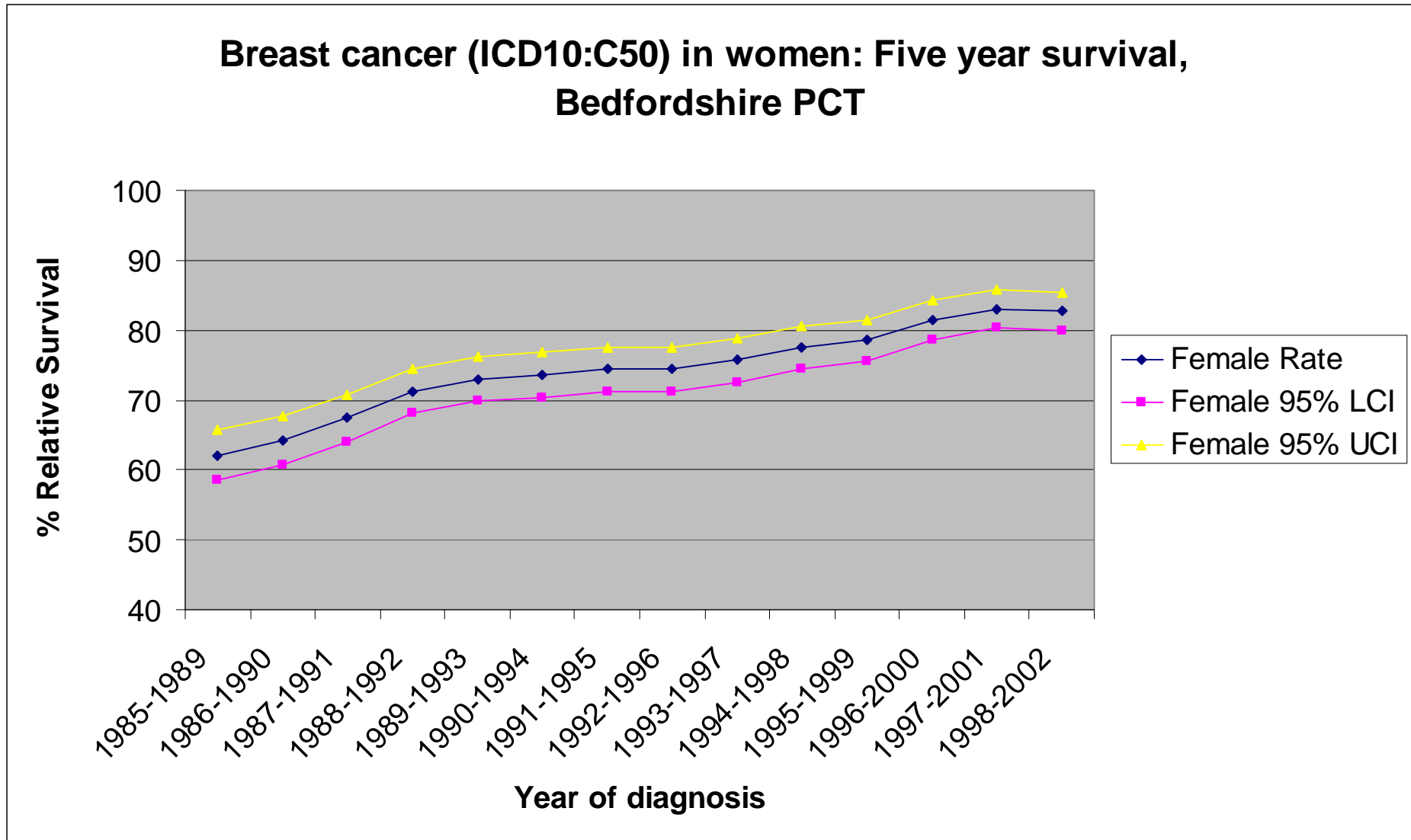
Breast cancer (ICD10:C50) in women: Five year survival, Luton PCT



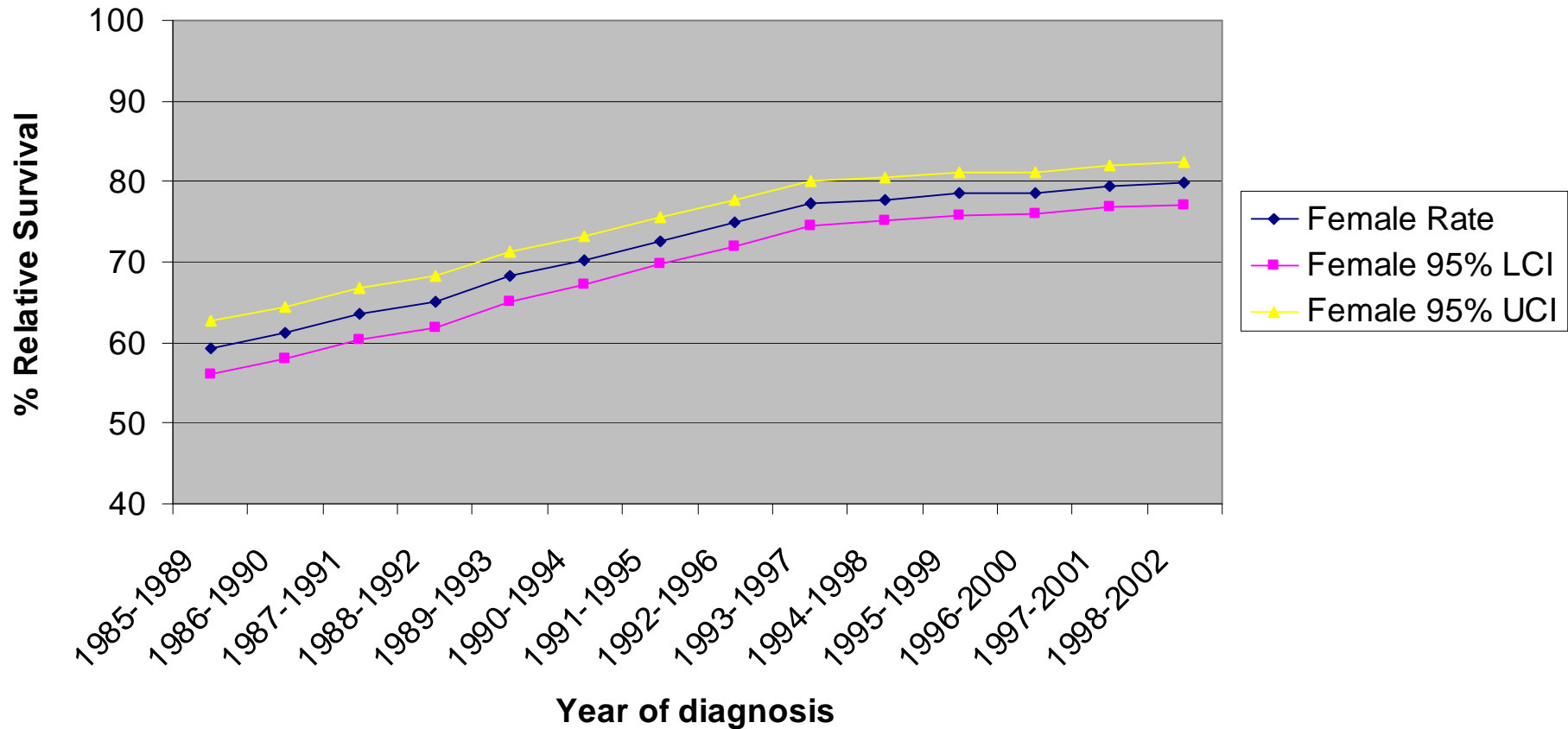
Breast cancer (ICD10:C50) in women: Five year survival, South East Essex PCT

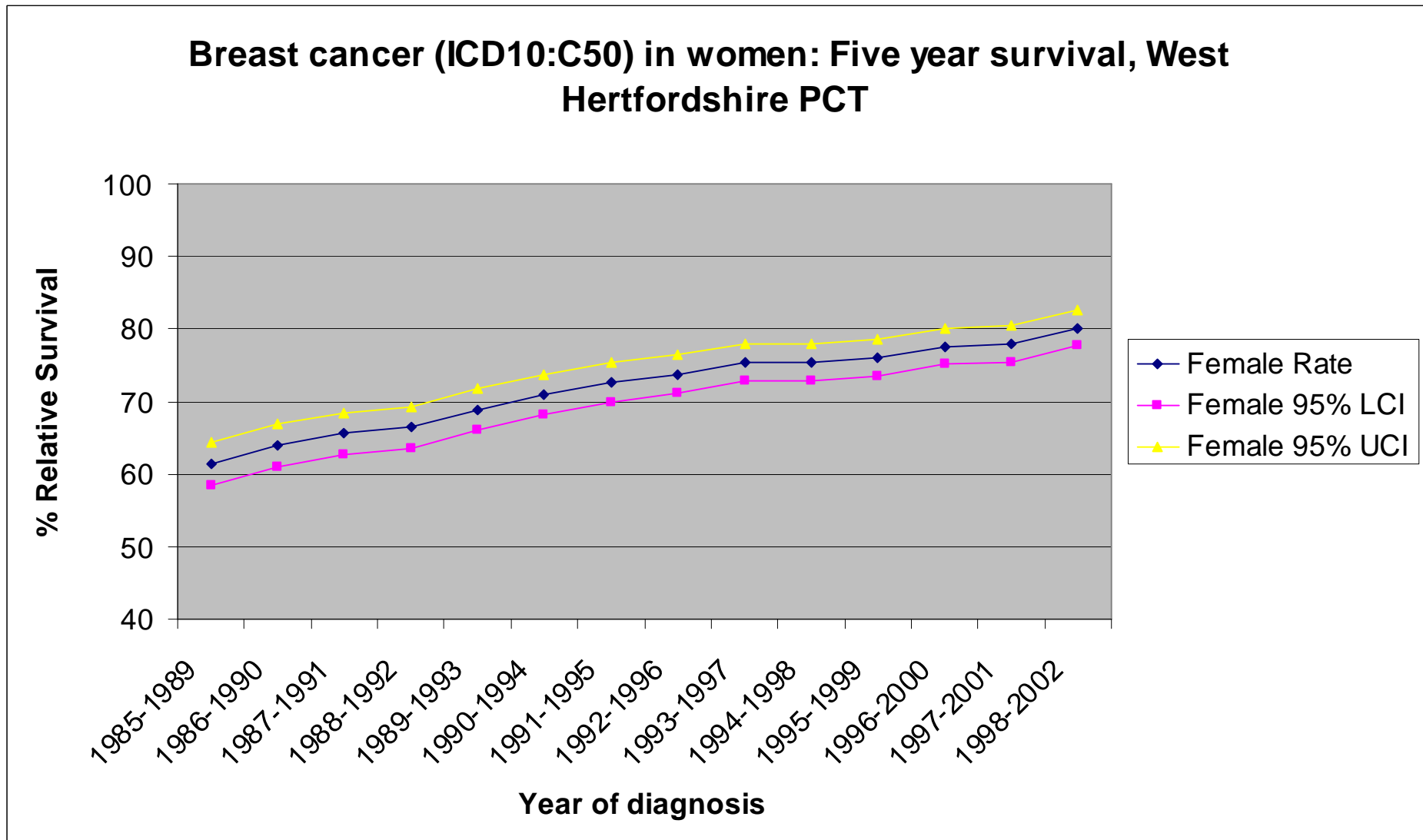


Breast cancer (ICD10:C50) in women: Five year survival, Bedfordshire PCT

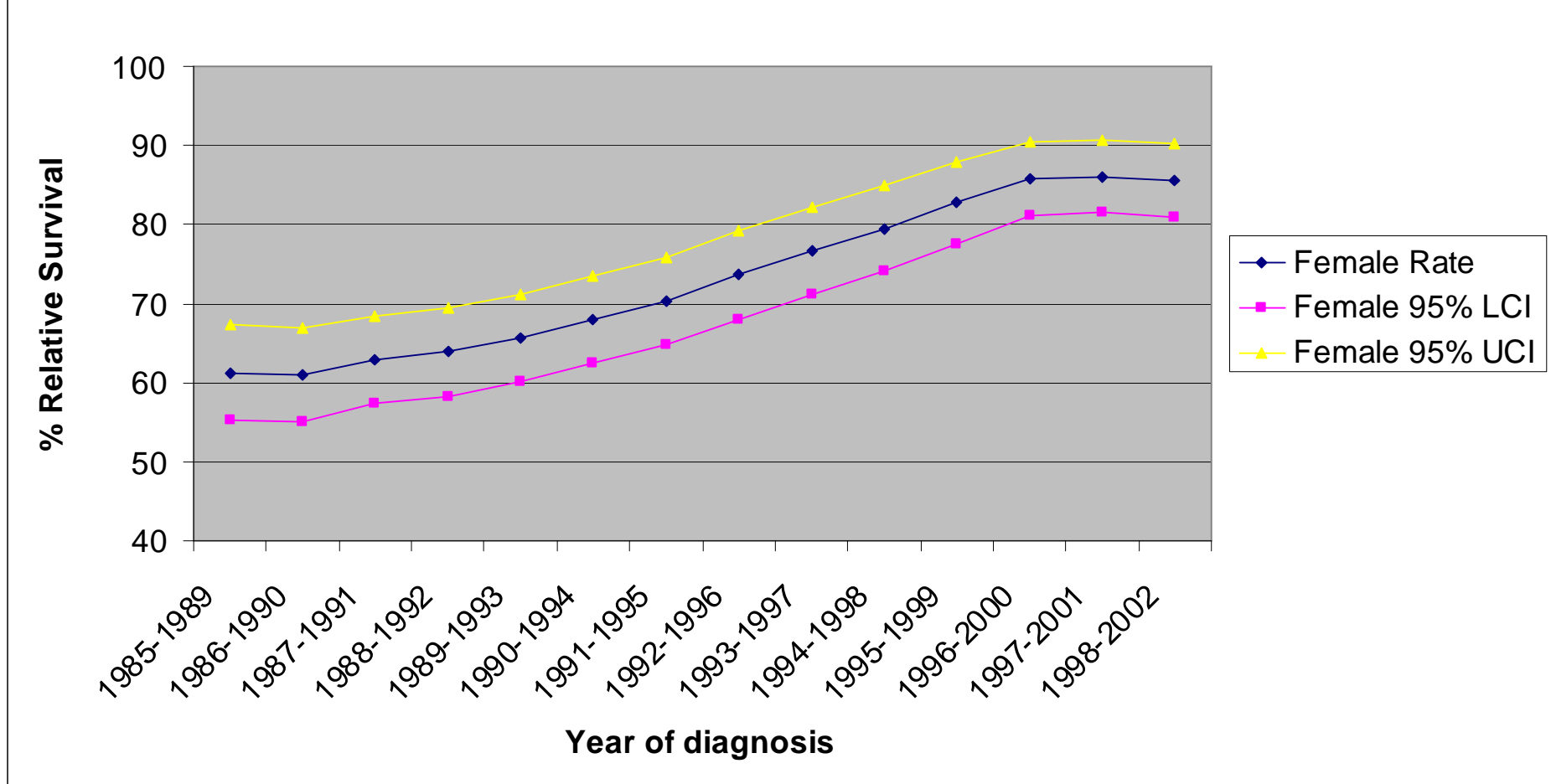


Breast cancer (ICD10:C50) in women: Five year survival, East and North Hertfordshire PCT

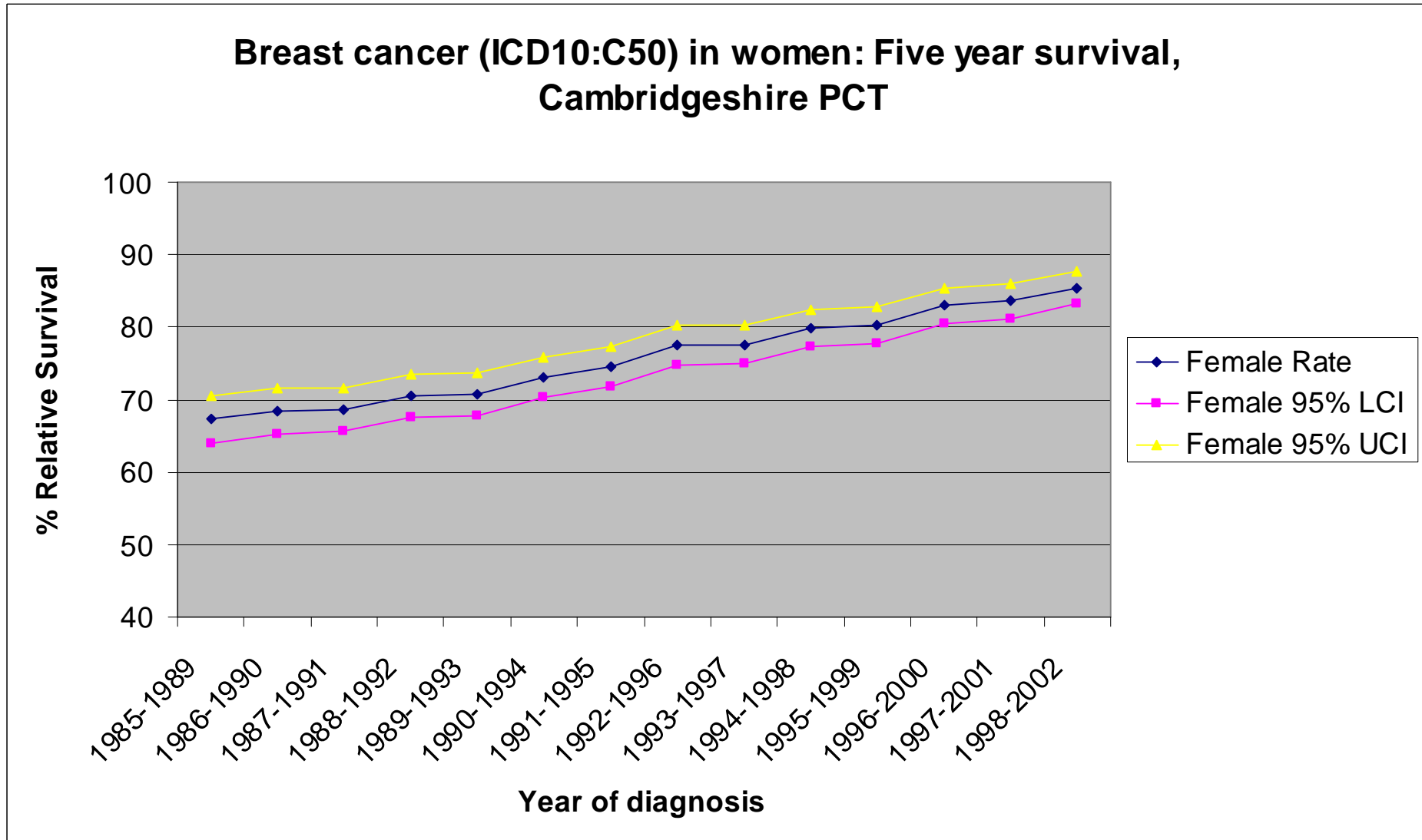




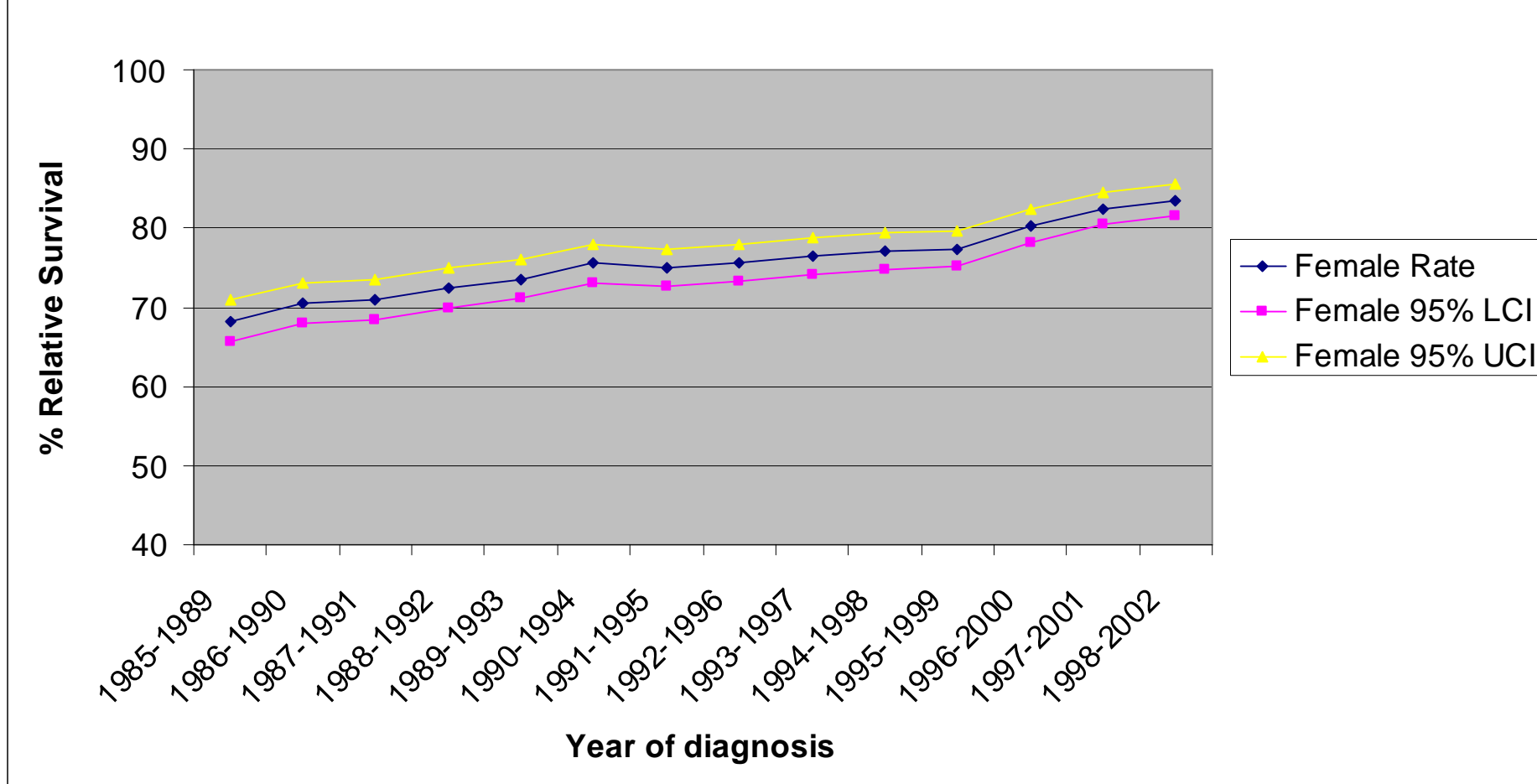
Breast cancer (ICD10:C50) in women: Five year survival, Peterborough PCT



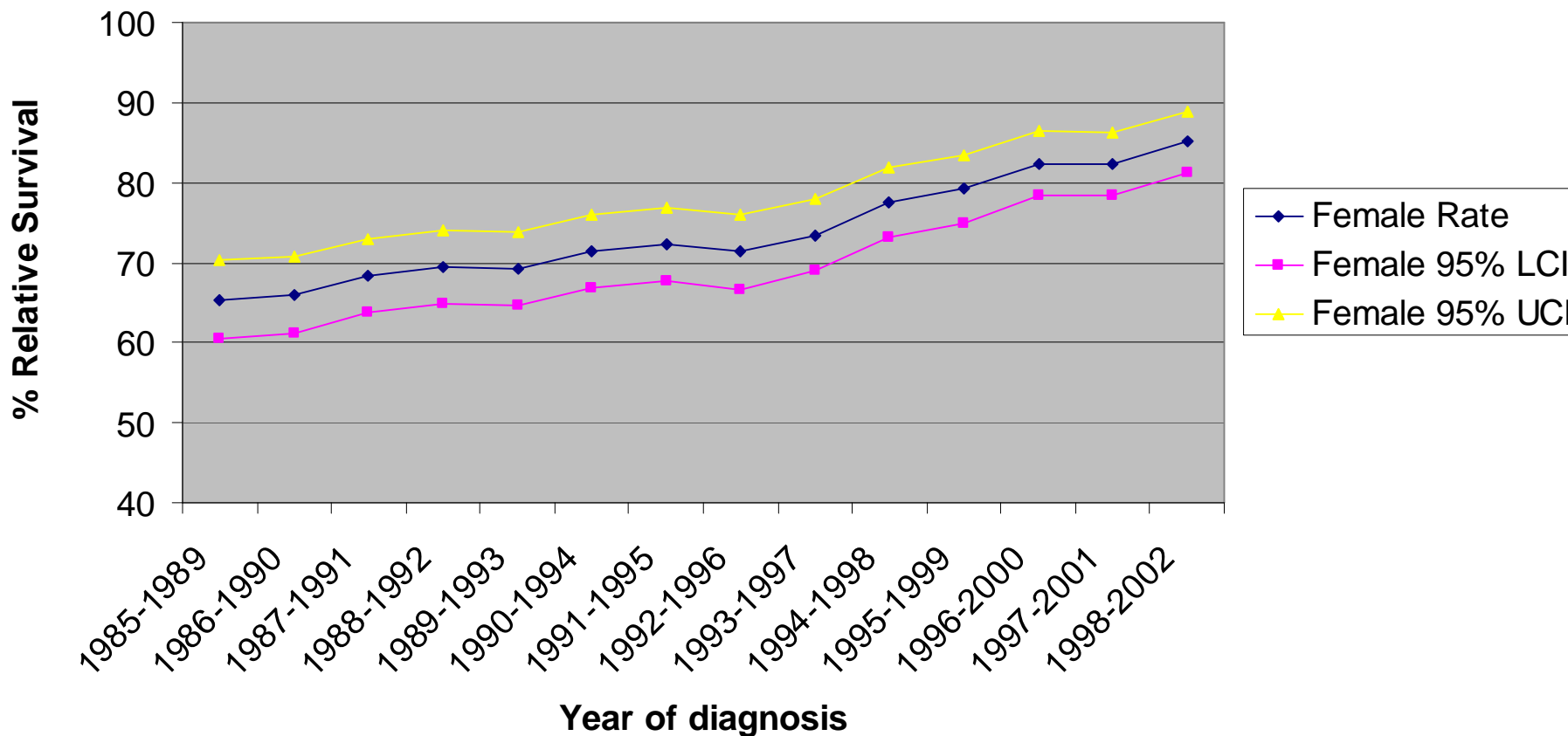
Breast cancer (ICD10:C50) in women: Five year survival, Cambridgeshire PCT

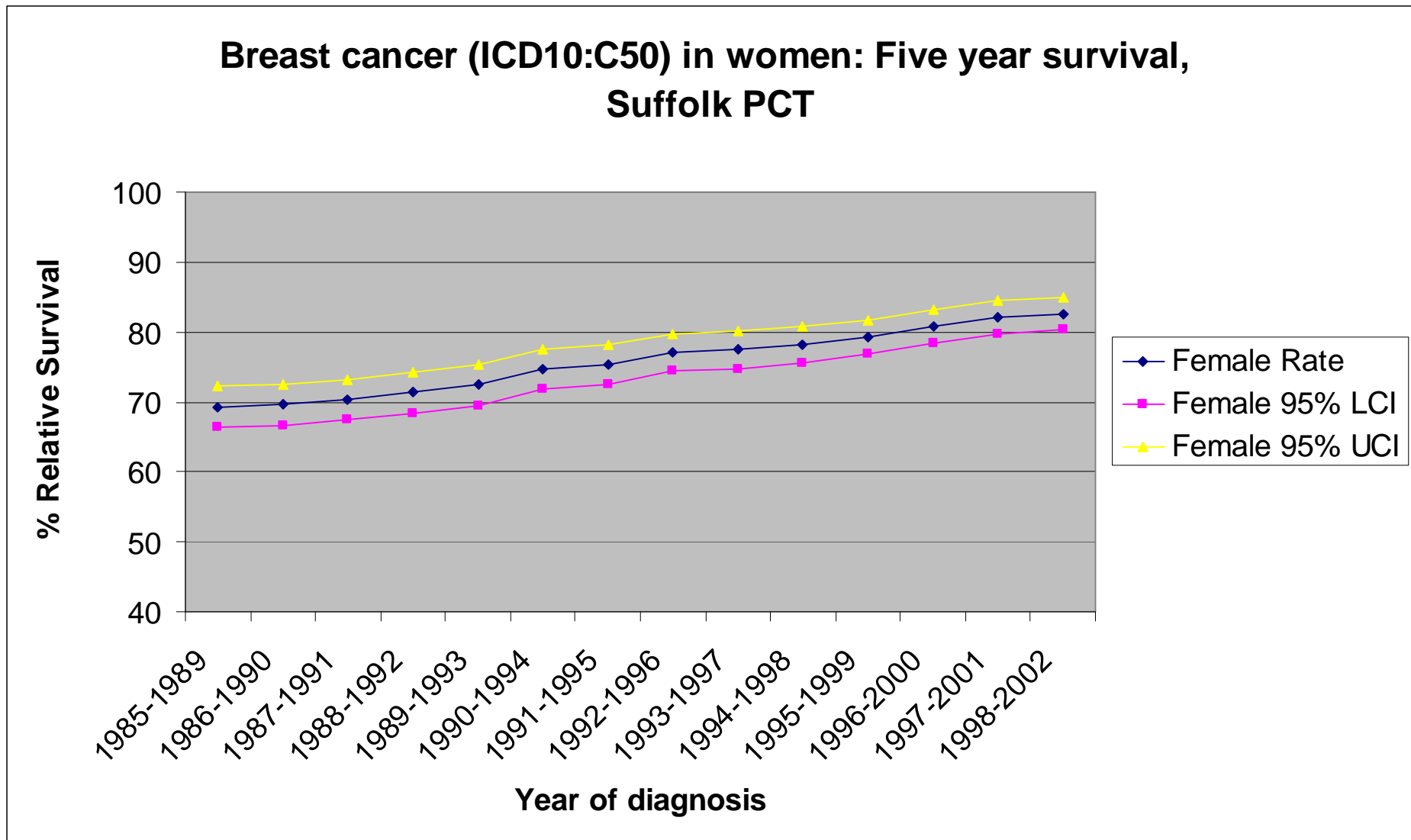


Breast cancer (ICD10:C50) in women: Five year survival, Norfolk PCT

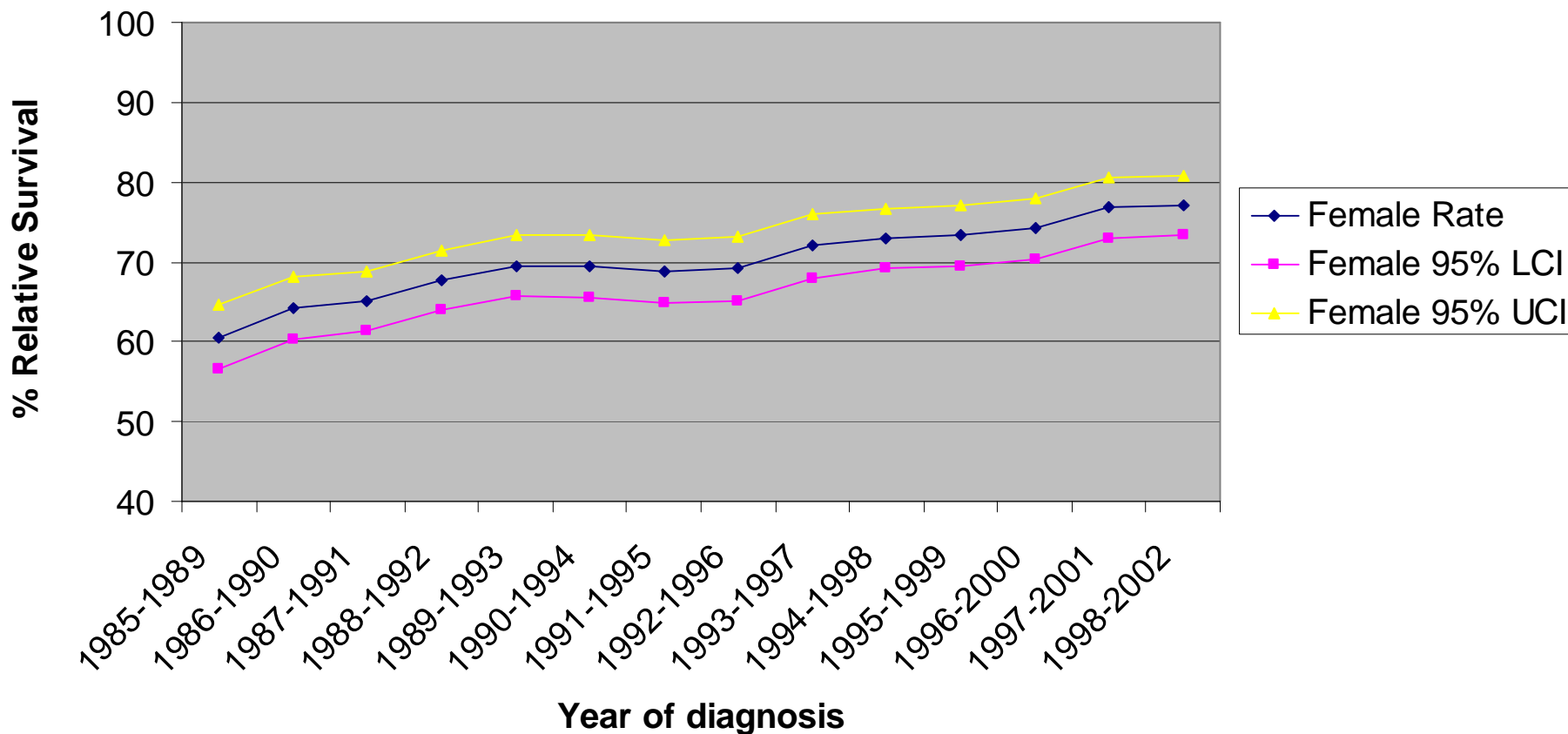


Breast cancer (ICD10:C50) in women: Five year survival, Great Yarmouth and Waveney PCT

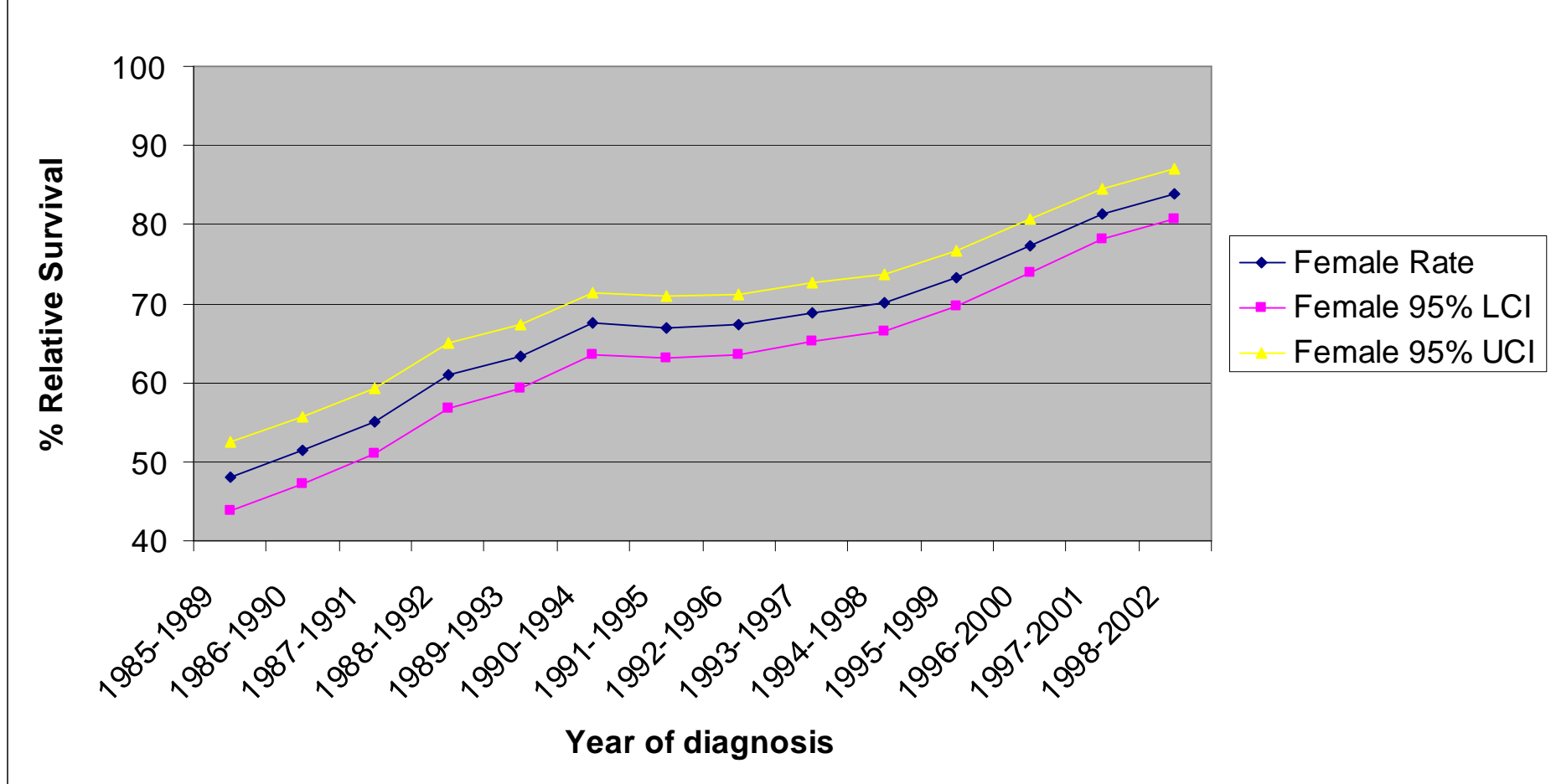




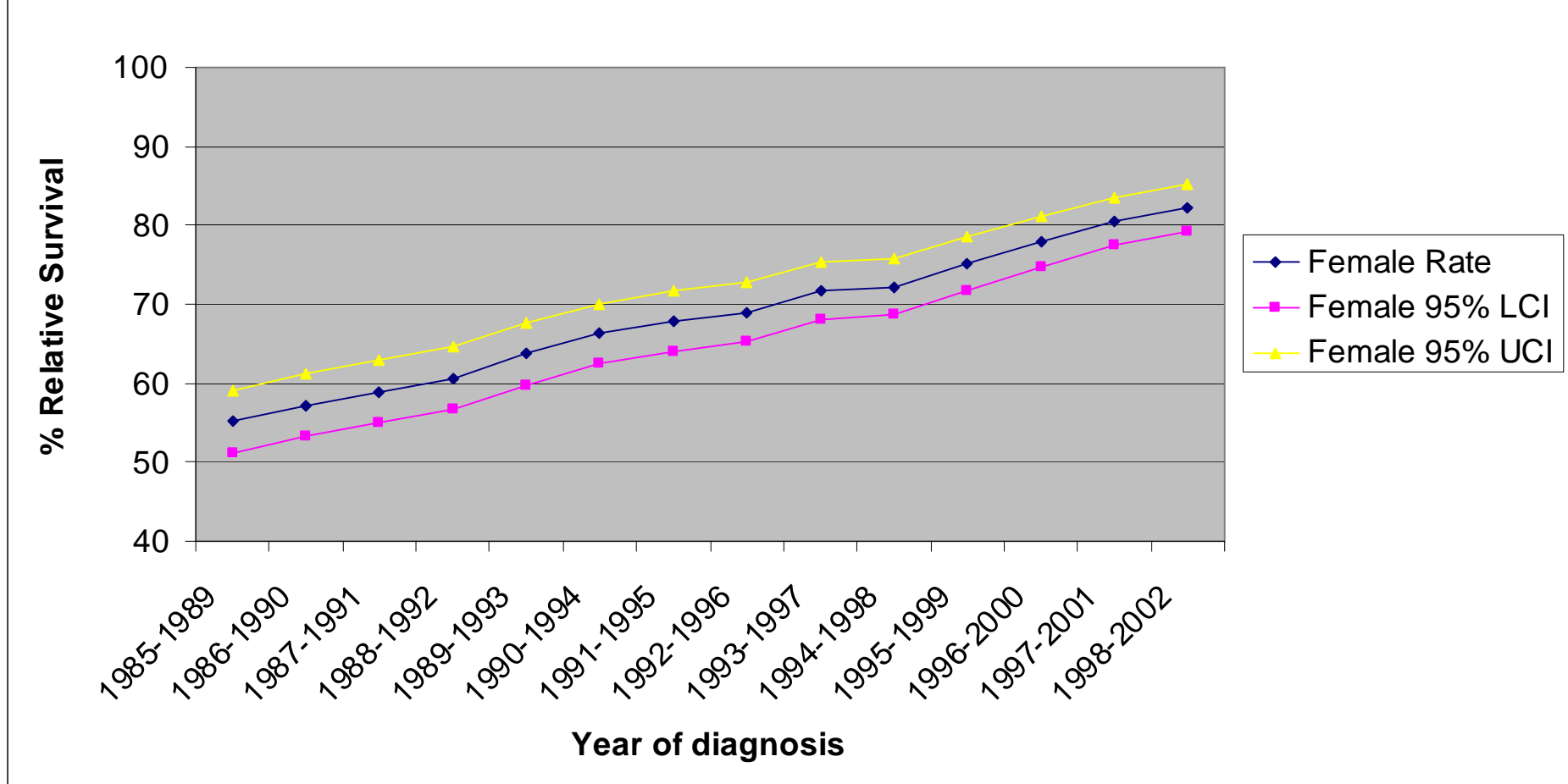
Breast cancer (ICD10:C50) in women: Five year survival, West essex PCT



Breast cancer (ICD10:C50) in women: Five year survival, North East Essex PCT



Breast cancer (ICD10:C50) in women: Five year survival, Mid Essex PCT



Breast cancer (ICD10:C50) in women: Five year survival, South West Essex PCT

