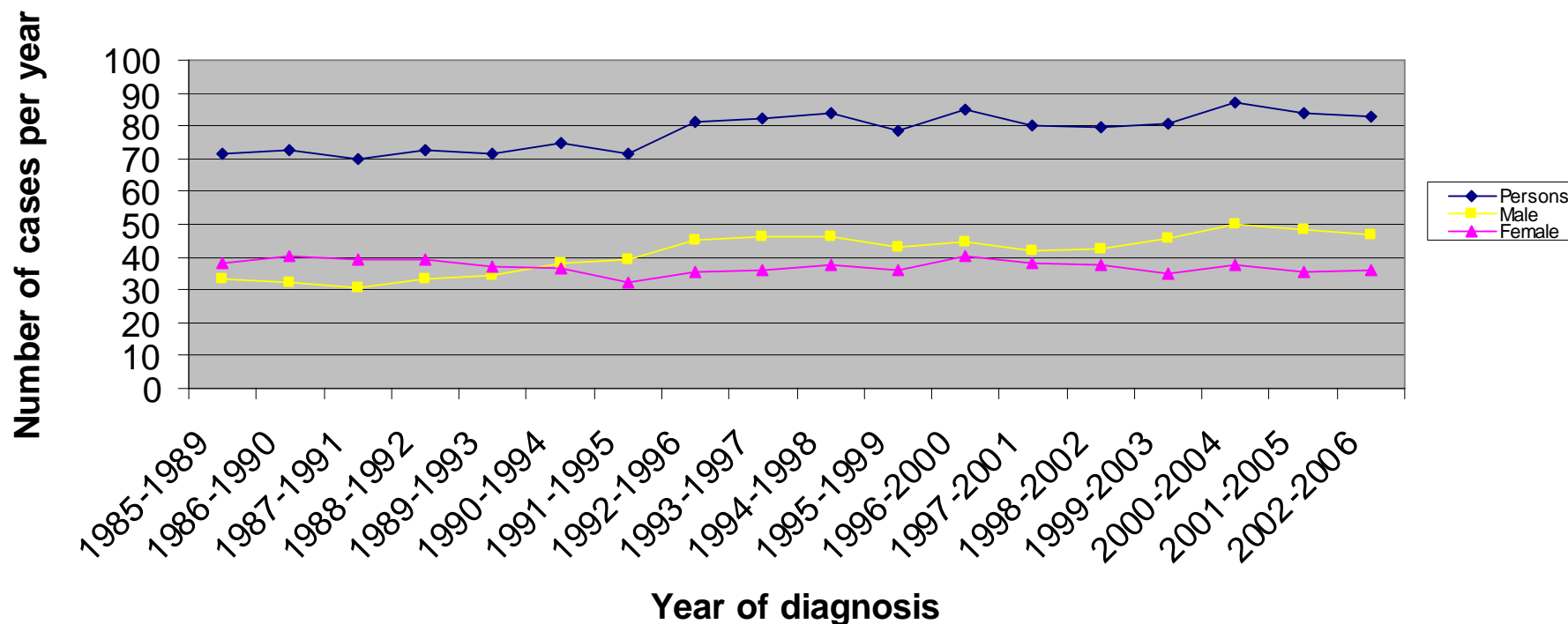
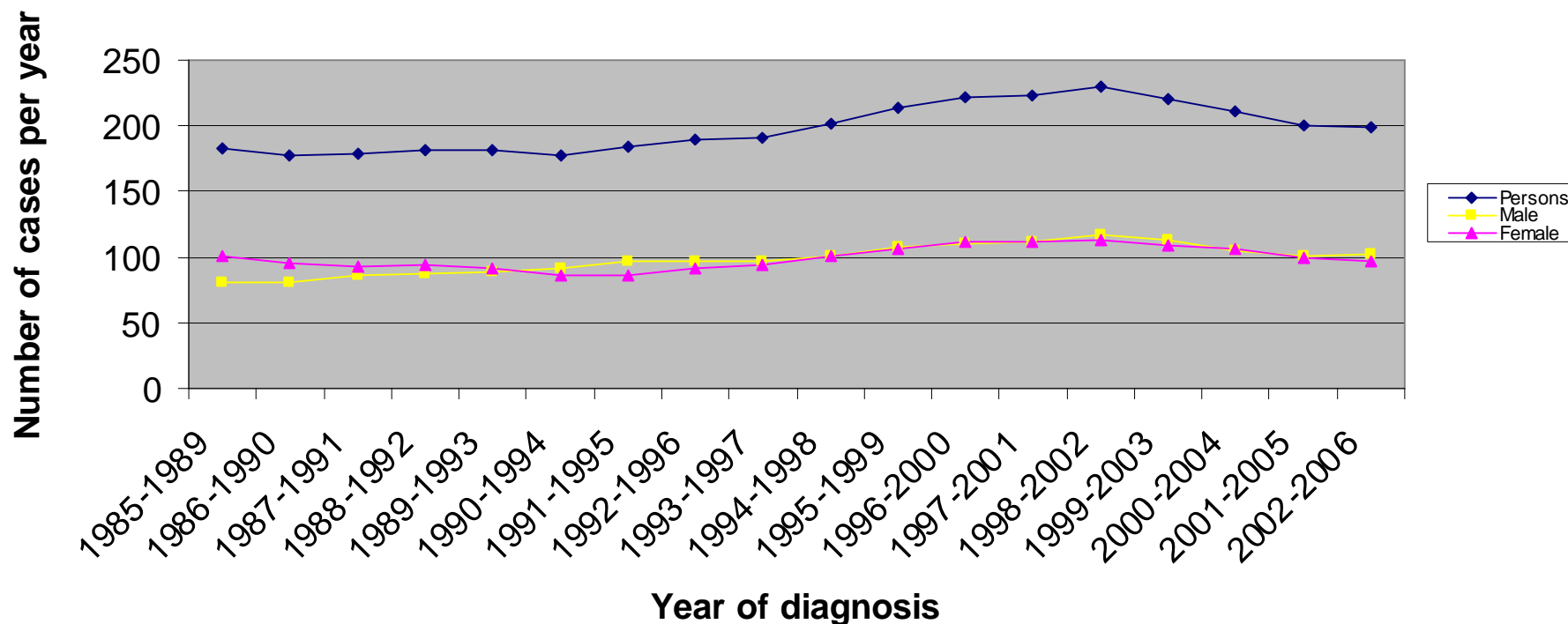


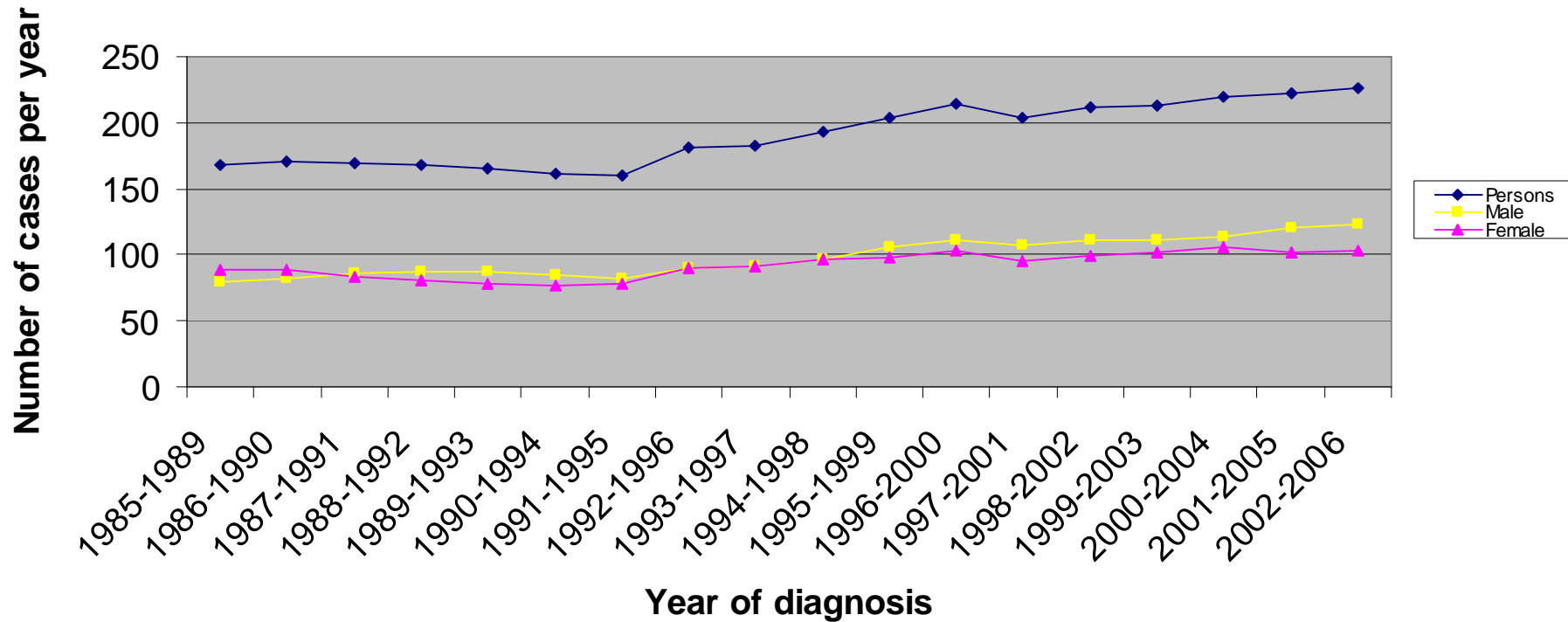
Incidence of colorectal cancer (ICD10:C18-C20) in Luton PCT : Number of cases

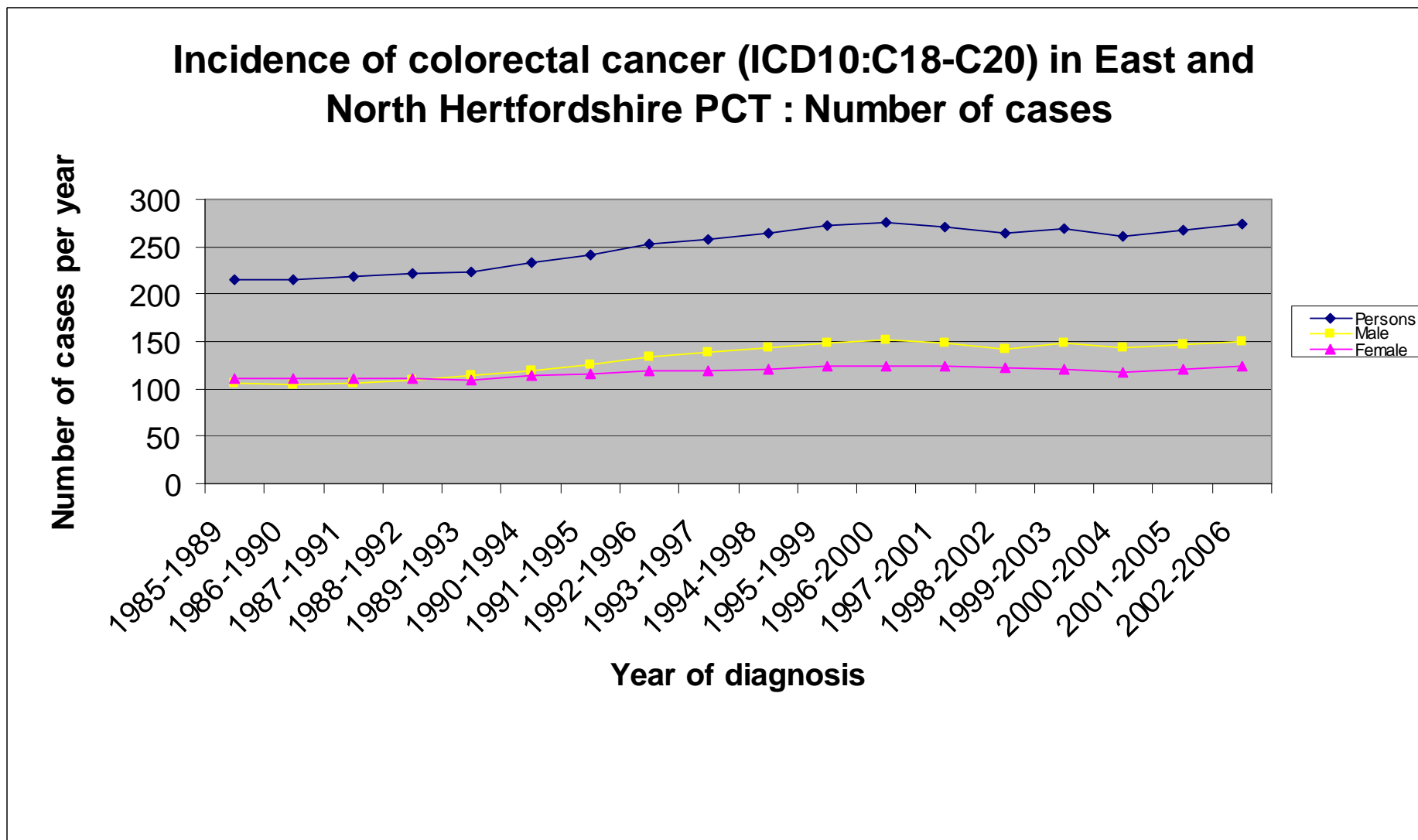


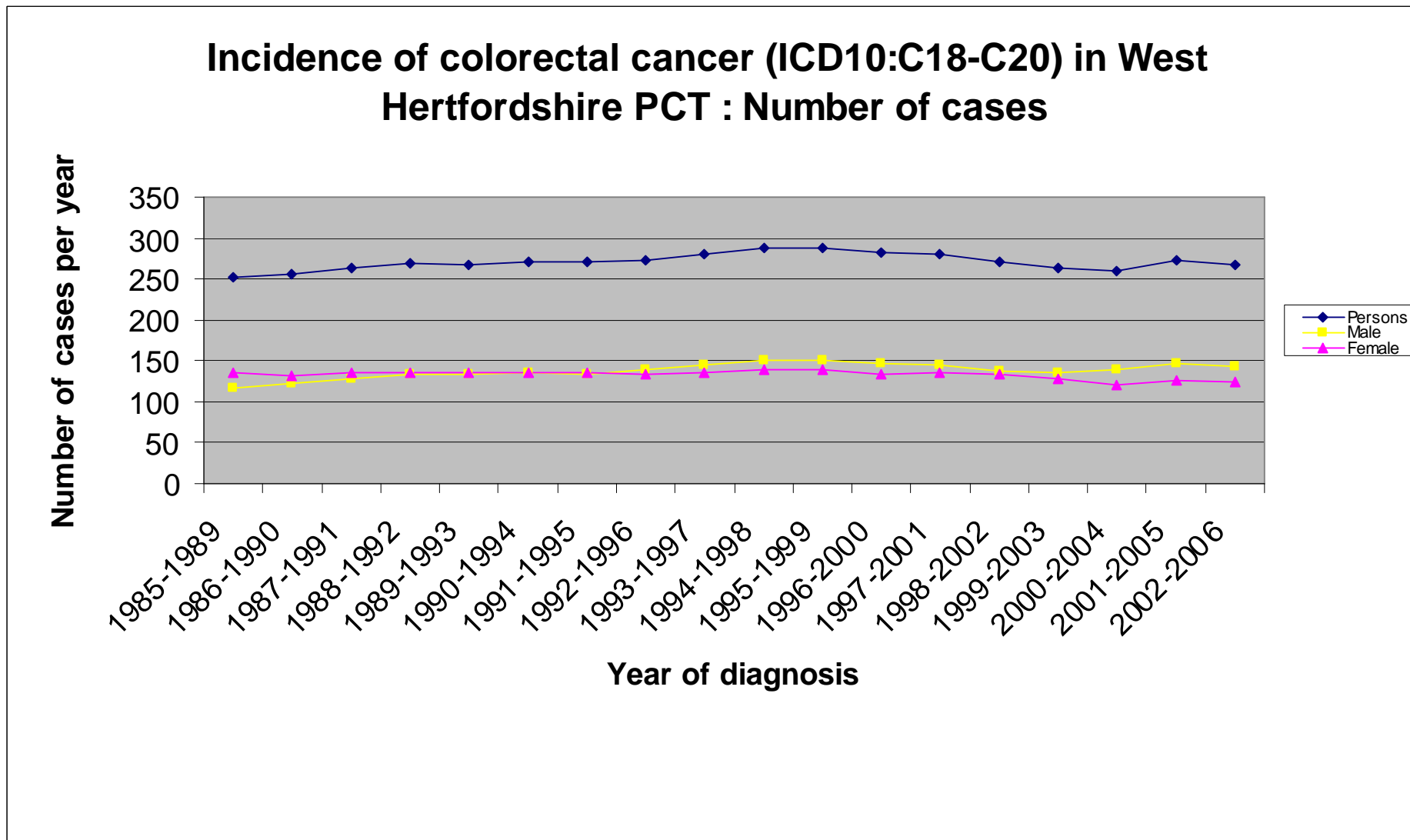
Incidence of colorectal cancer (ICD10:C18-C20) in South East Essex PCT : Number of cases



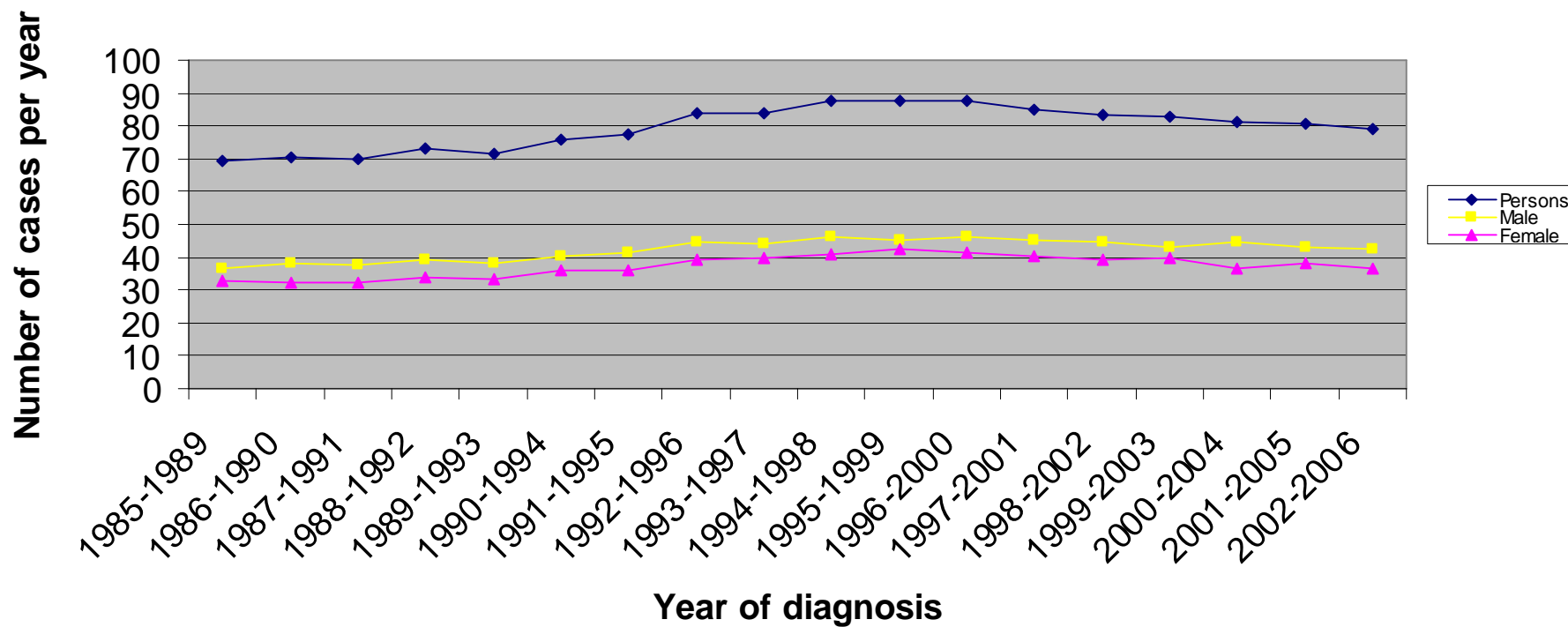
Incidence of colorectal cancer (ICD10:C18-C20) in Bedfordshire PCT : Number of cases

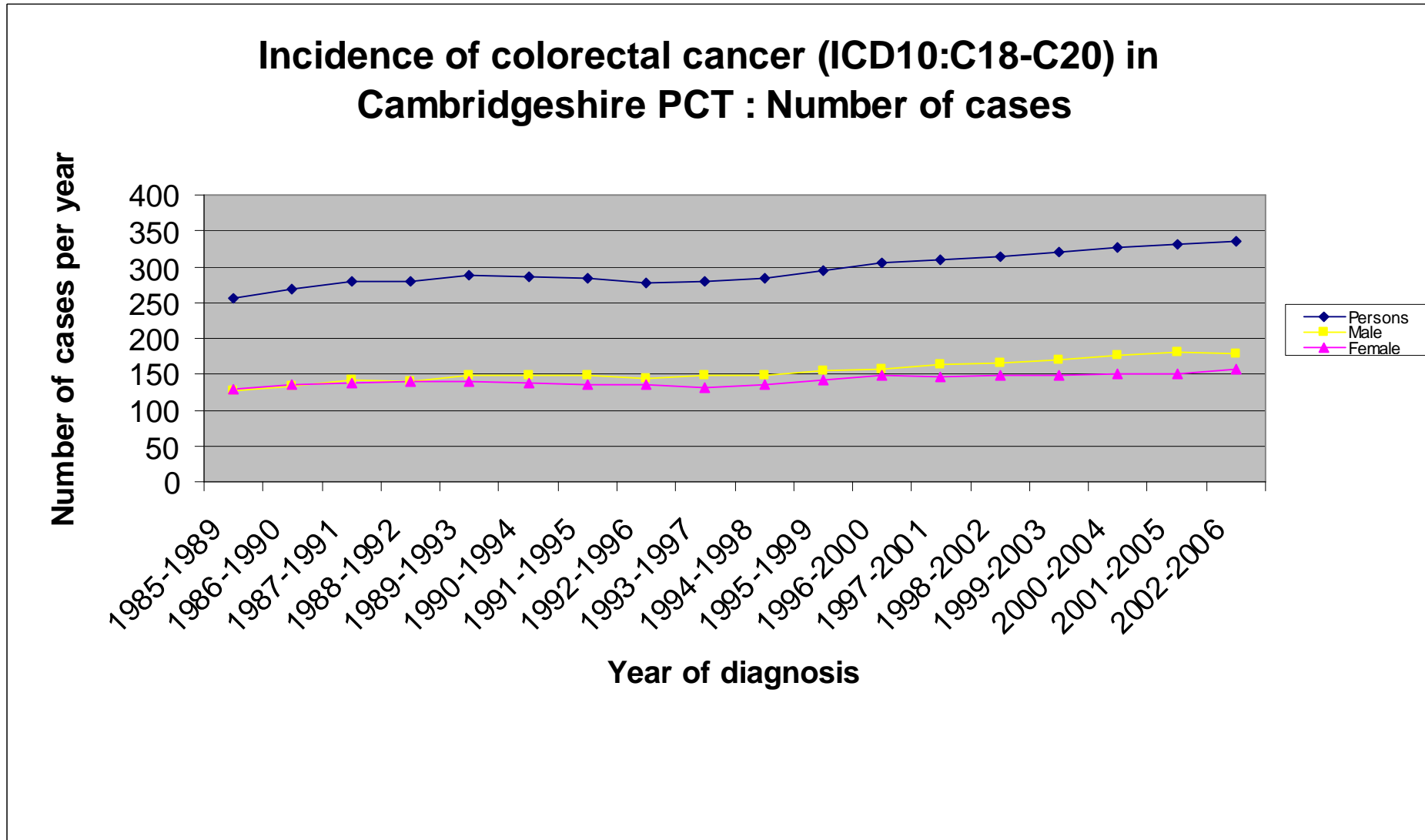




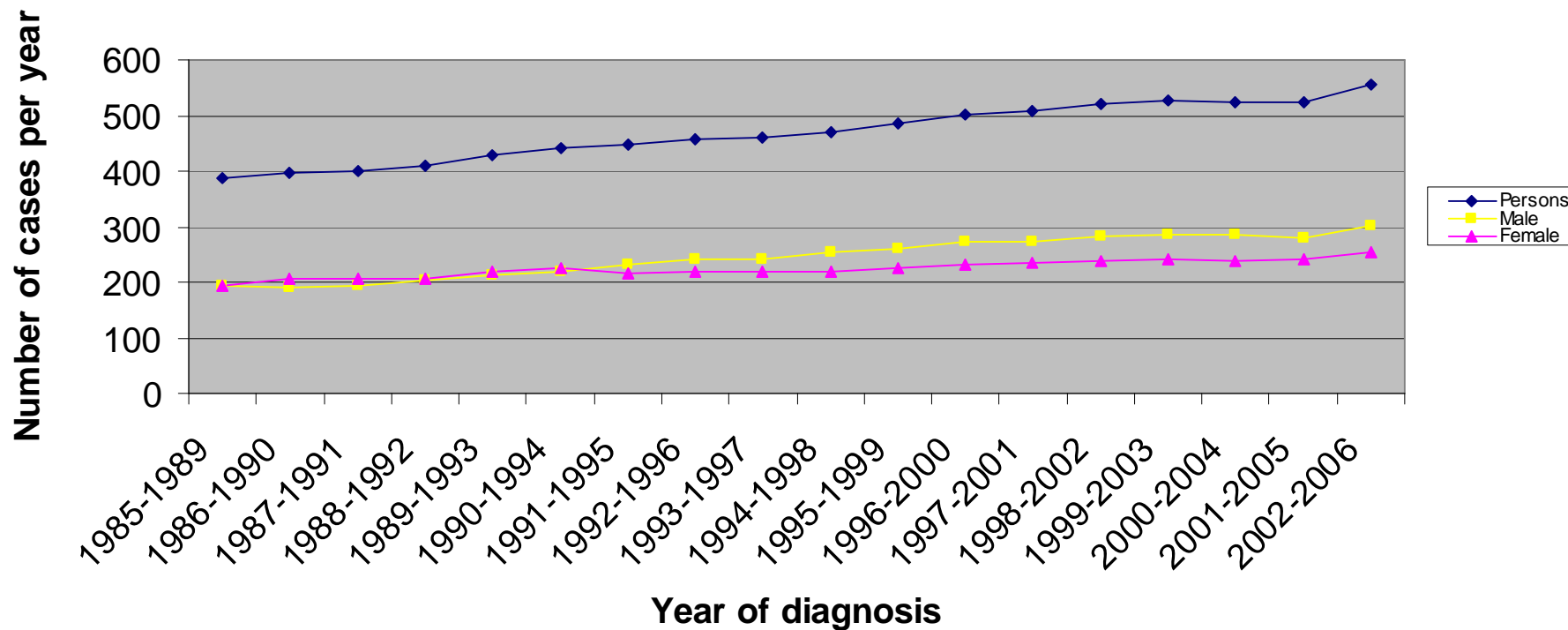


Incidence of colorectal cancer (ICD10:C18-C20) in Peterborough PCT : Number of cases

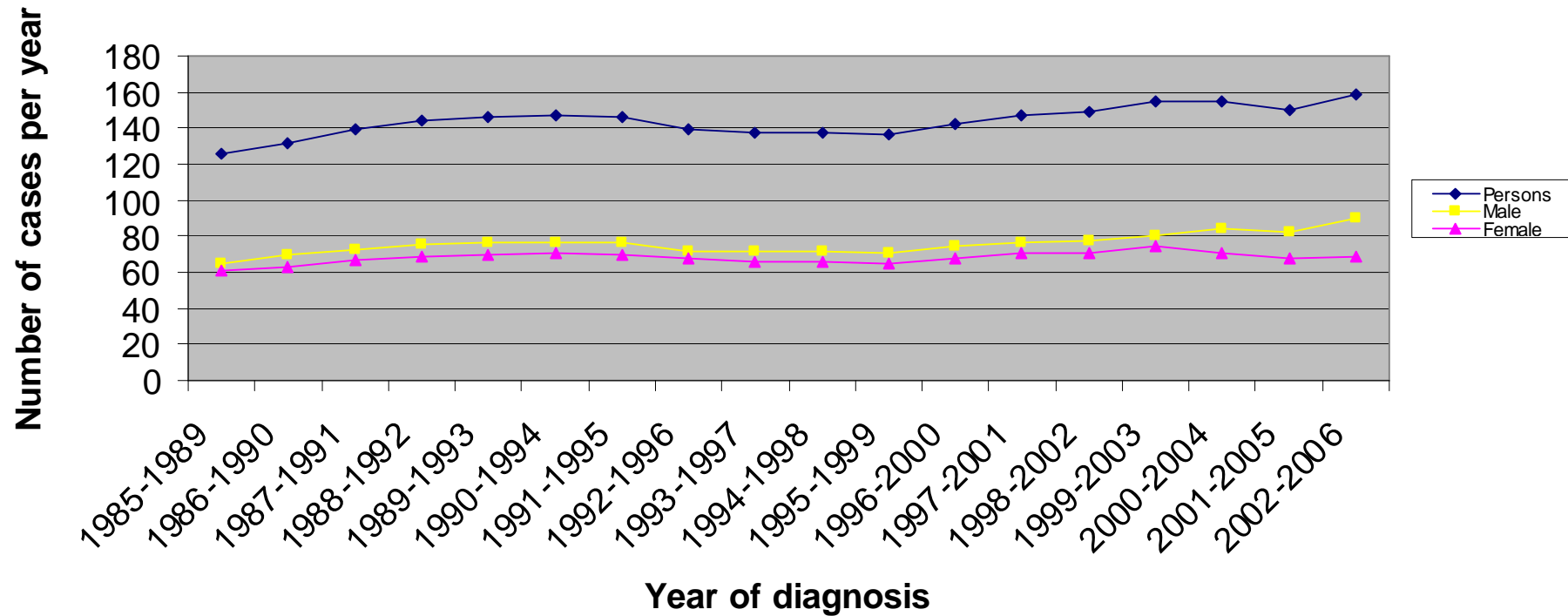




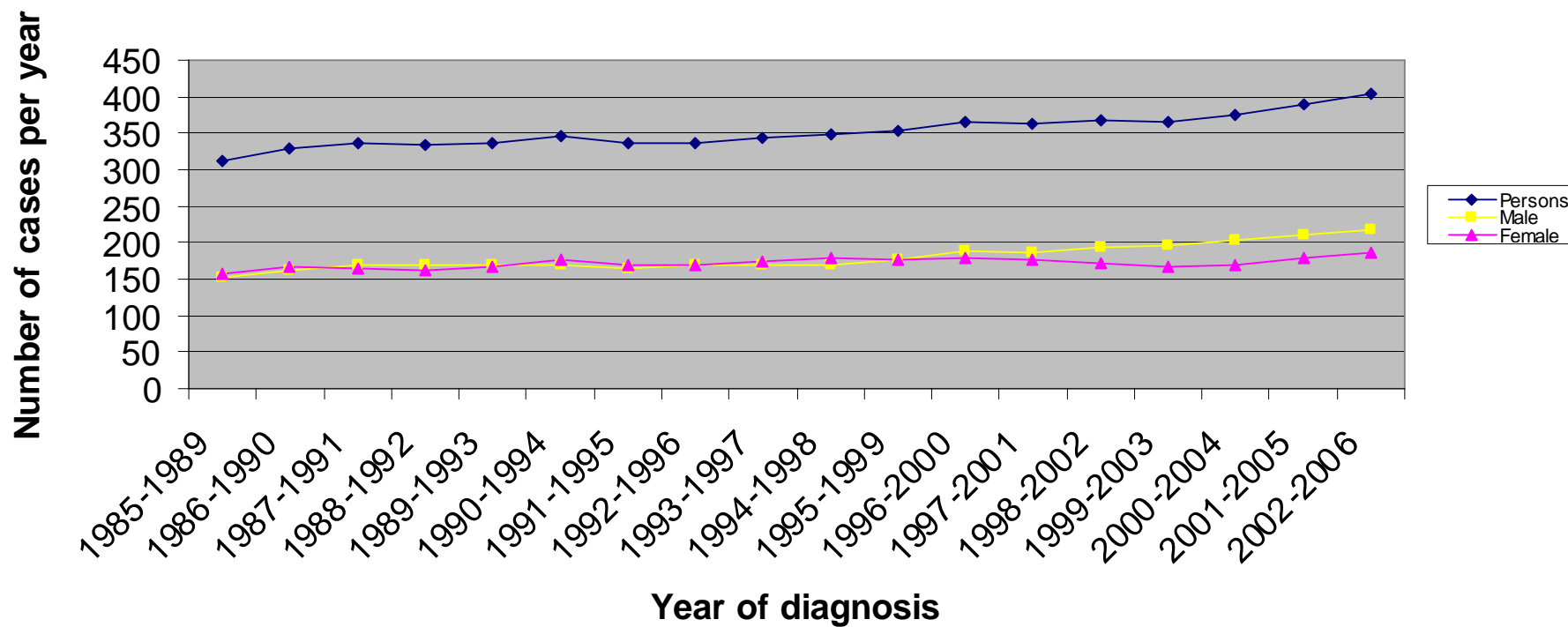
Incidence of colorectal cancer (ICD10:C18-C20) in Norfolk PCT : Number of cases



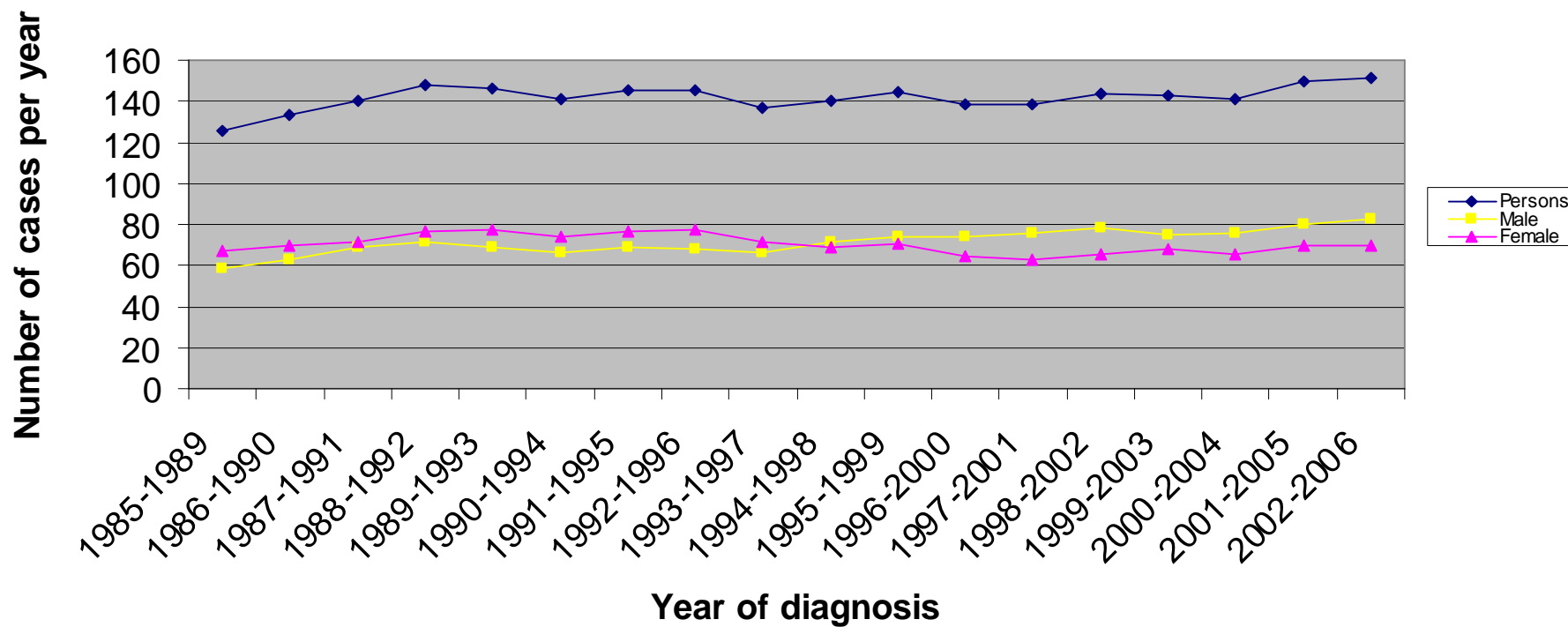
Incidence of colorectal cancer (ICD10:C18-C20) in Great Yarmouth and Waveney PCT : Number of cases



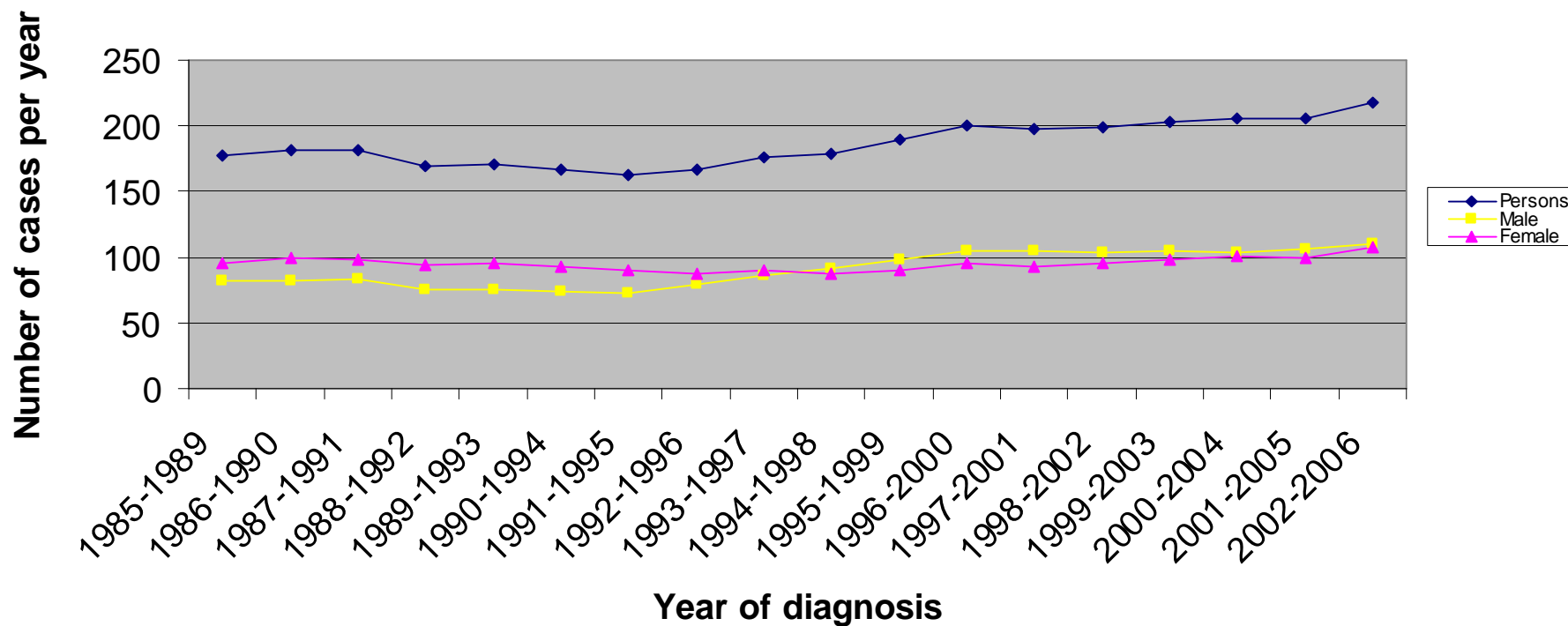
Incidence of colorectal cancer (ICD10:C18-C20) in Suffolk PCT : Number of cases



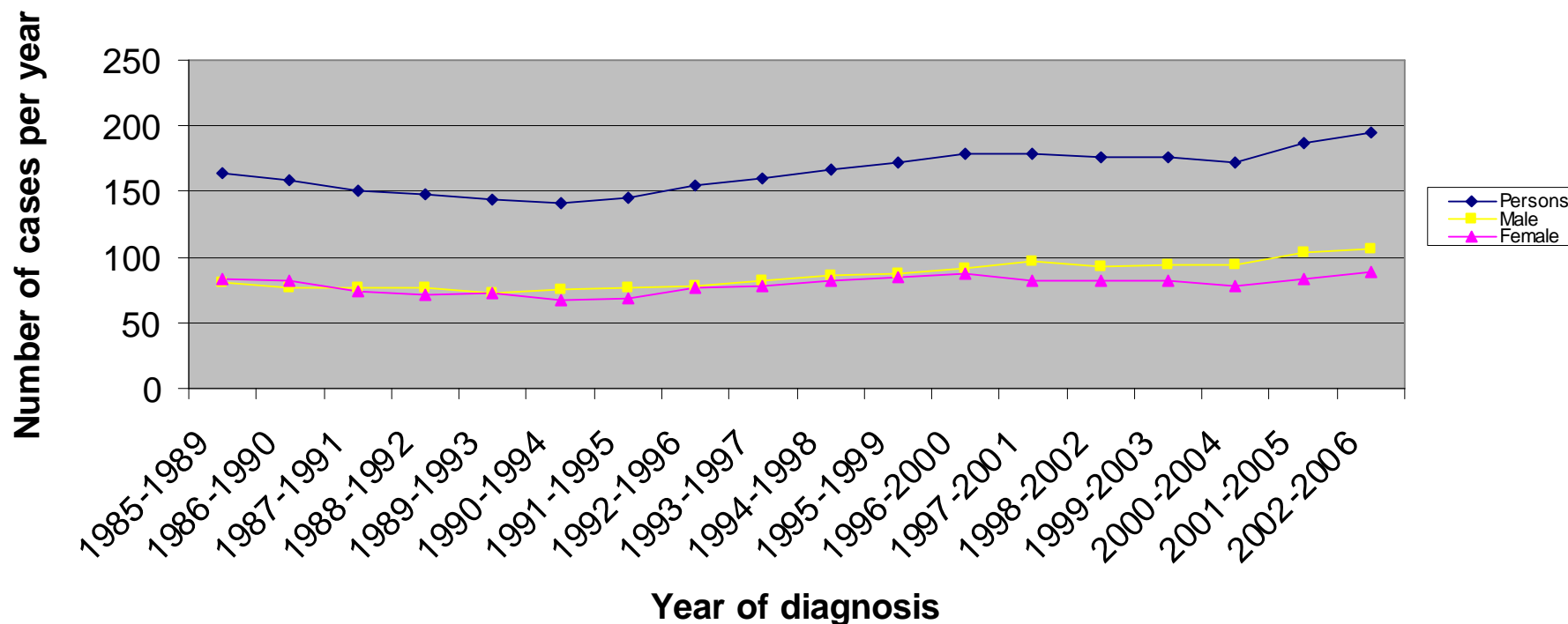
Incidence of colorectal cancer (ICD10:C18-C20) in West Essex PCT : Number of cases



Incidence of colorectal cancer (ICD10:C18-C20) in North East Essex PCT : Number of cases



**Incidence of colorectal cancer (ICD10:C18-C20) in Mid Essex
PCT : Number of cases**



Incidence of colorectal cancer (ICD10:C18-C20) in South West Essex PCT : Number of cases

