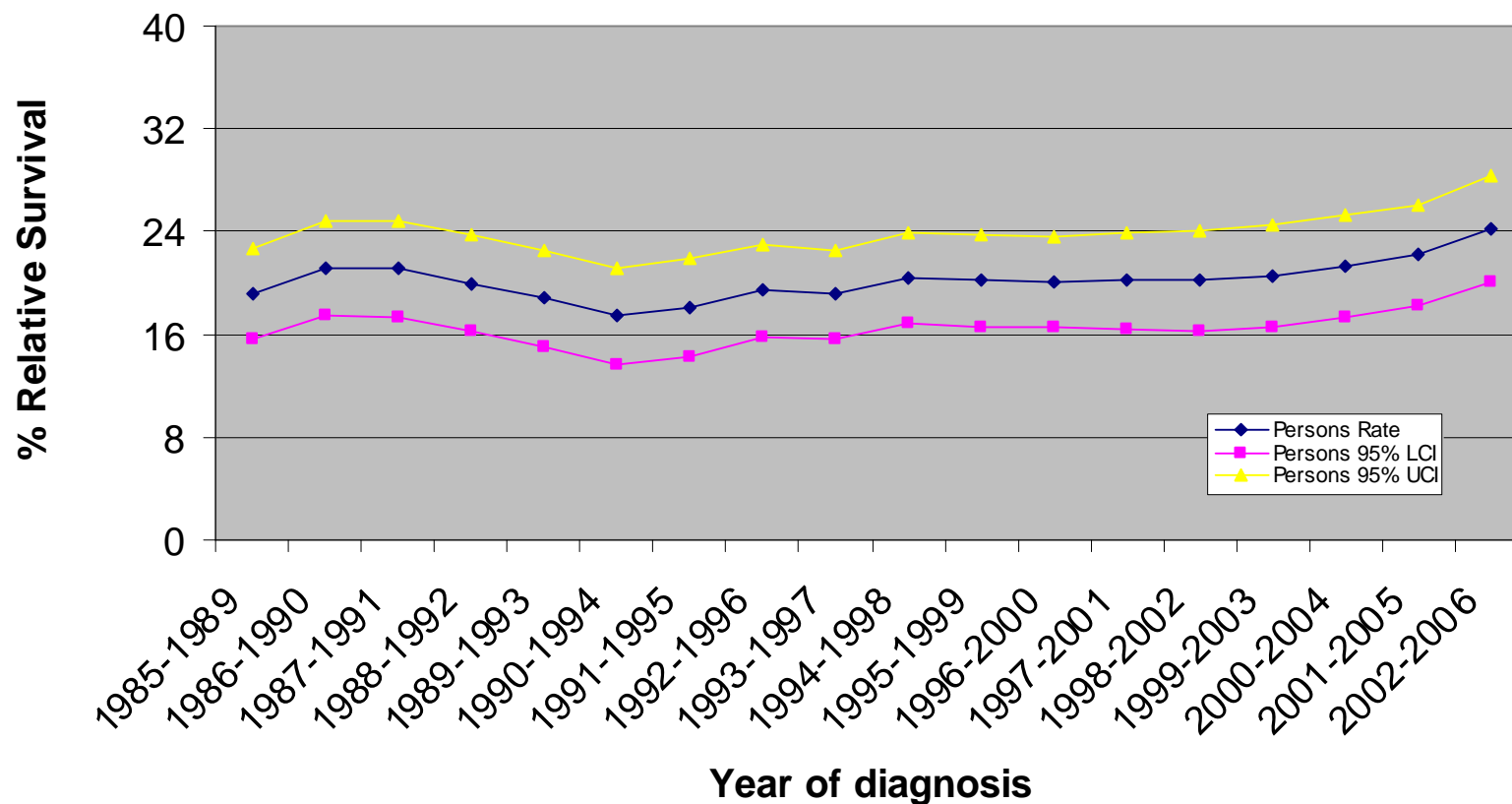
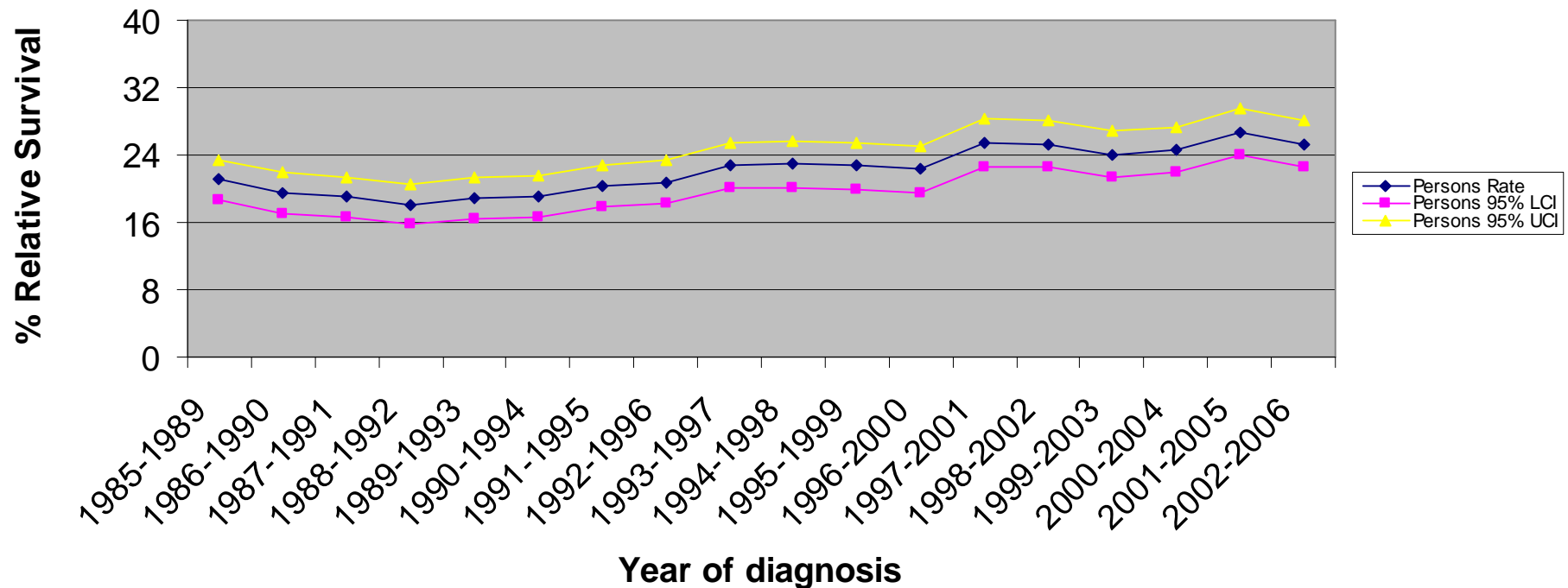


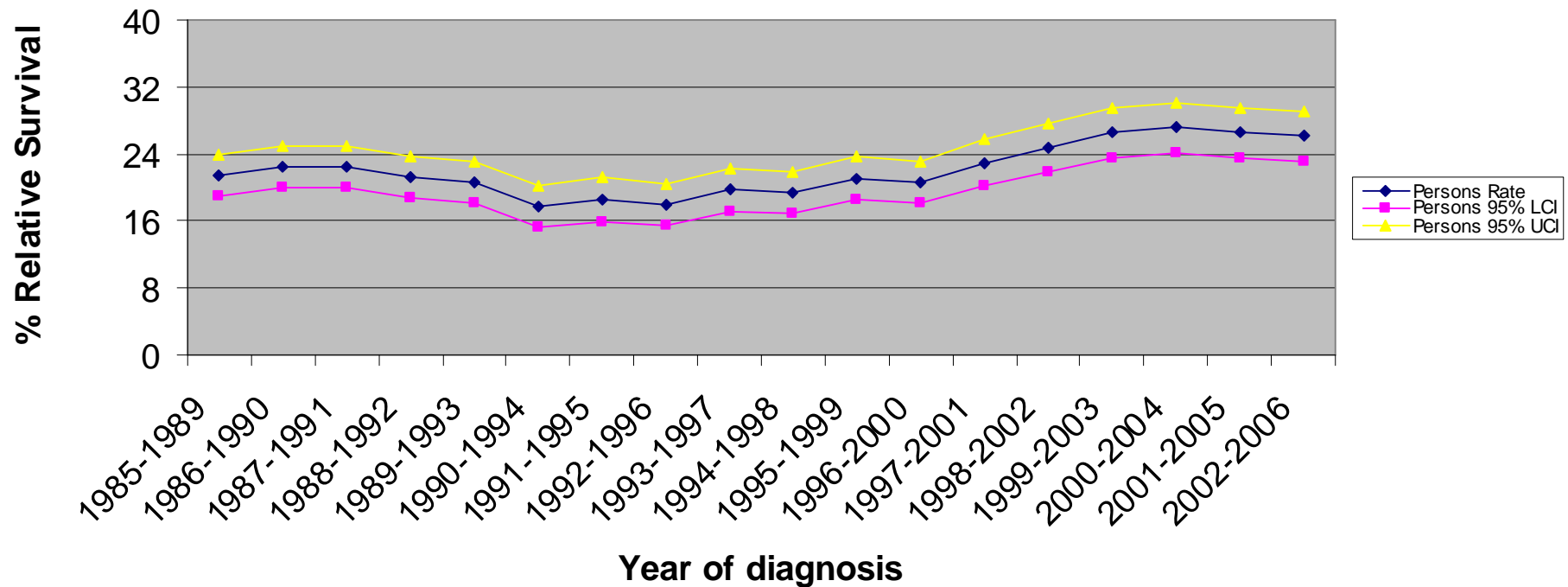
Trachea, Bronchus and Lung cancer (ICD10:C33-C34): One year survival, Luton PCT



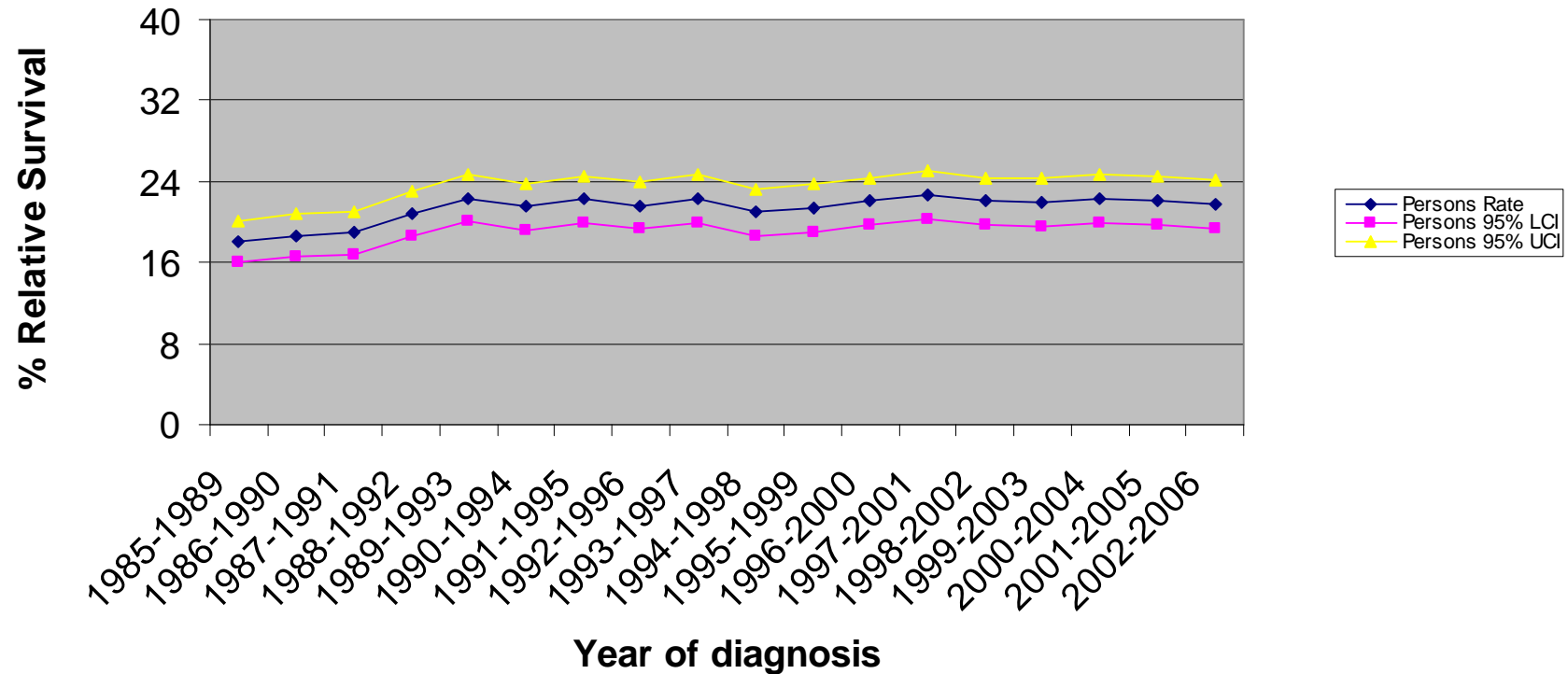
Trachea, Bronchus and Lung cancer (ICD10:C33-C34) : One year survival, South East Essex PCT



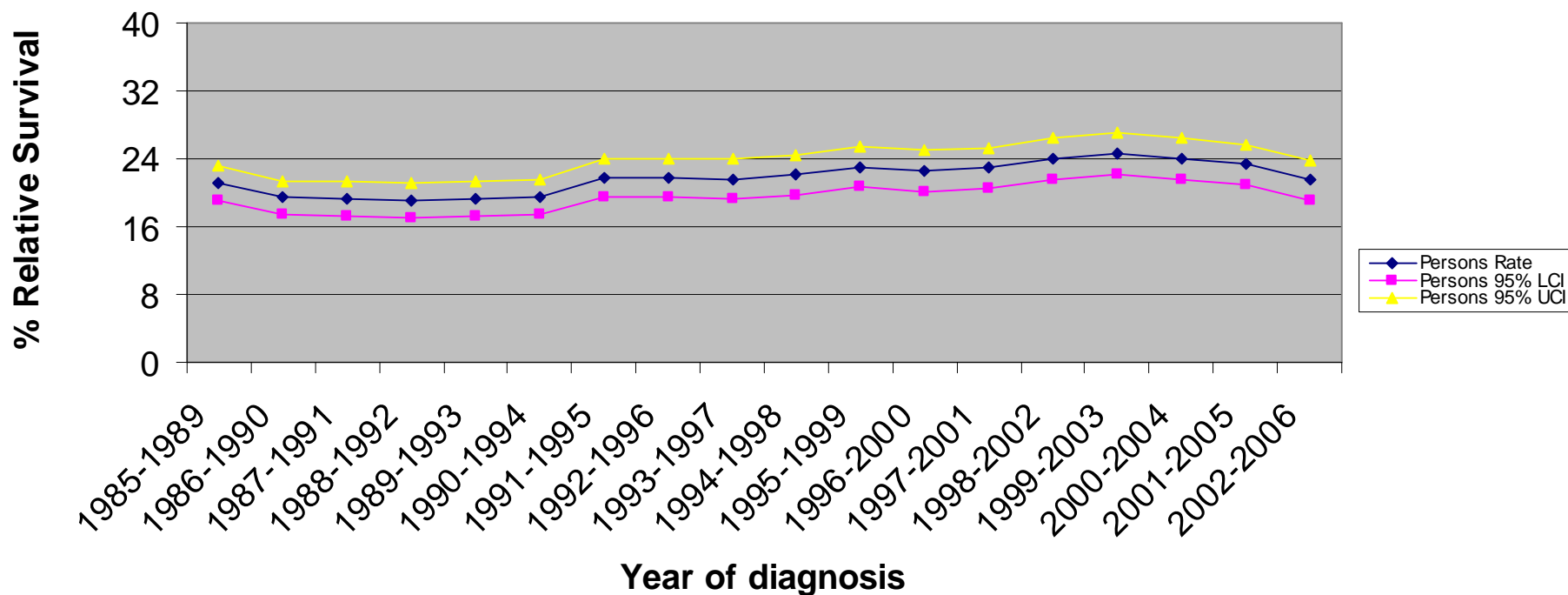
Trachea, Bronchus and Lung cancer (ICD10:C33-C34): One year survival, Bedfordshire PCT



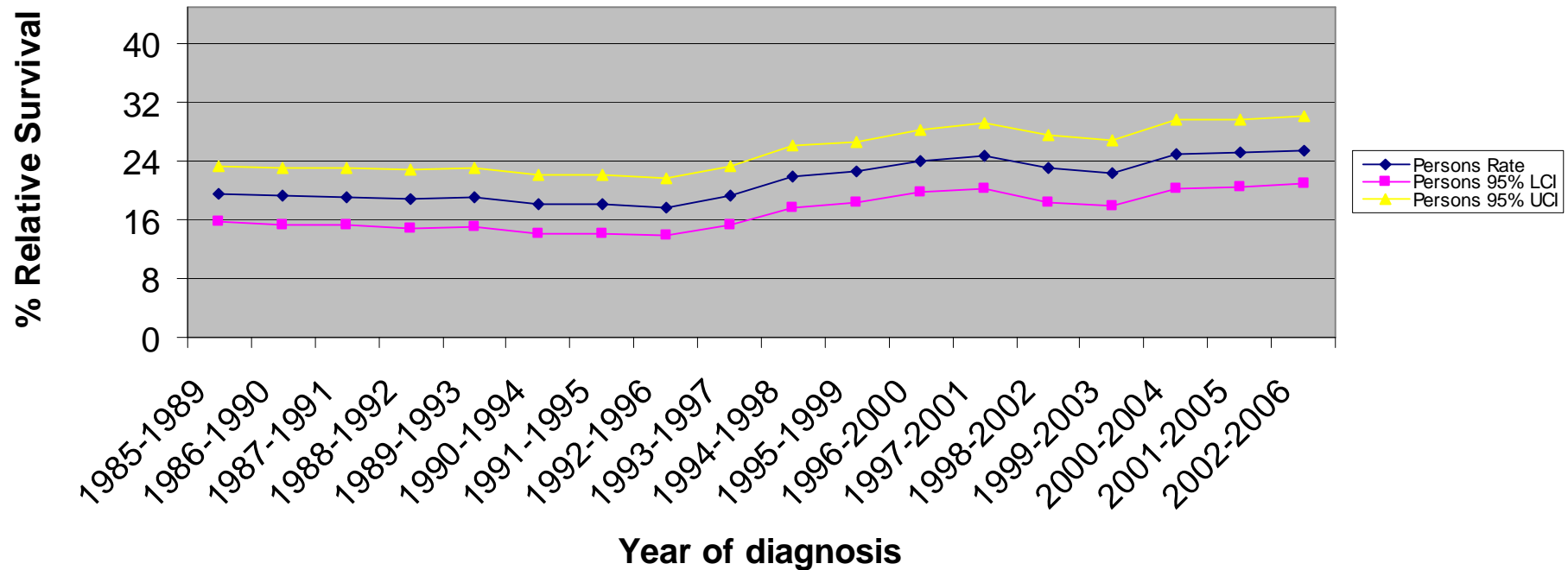
Trachea, Bronchus and Lung cancer (ICD10:C33-C34) : One year survival, East and North Hertfordshire PCT



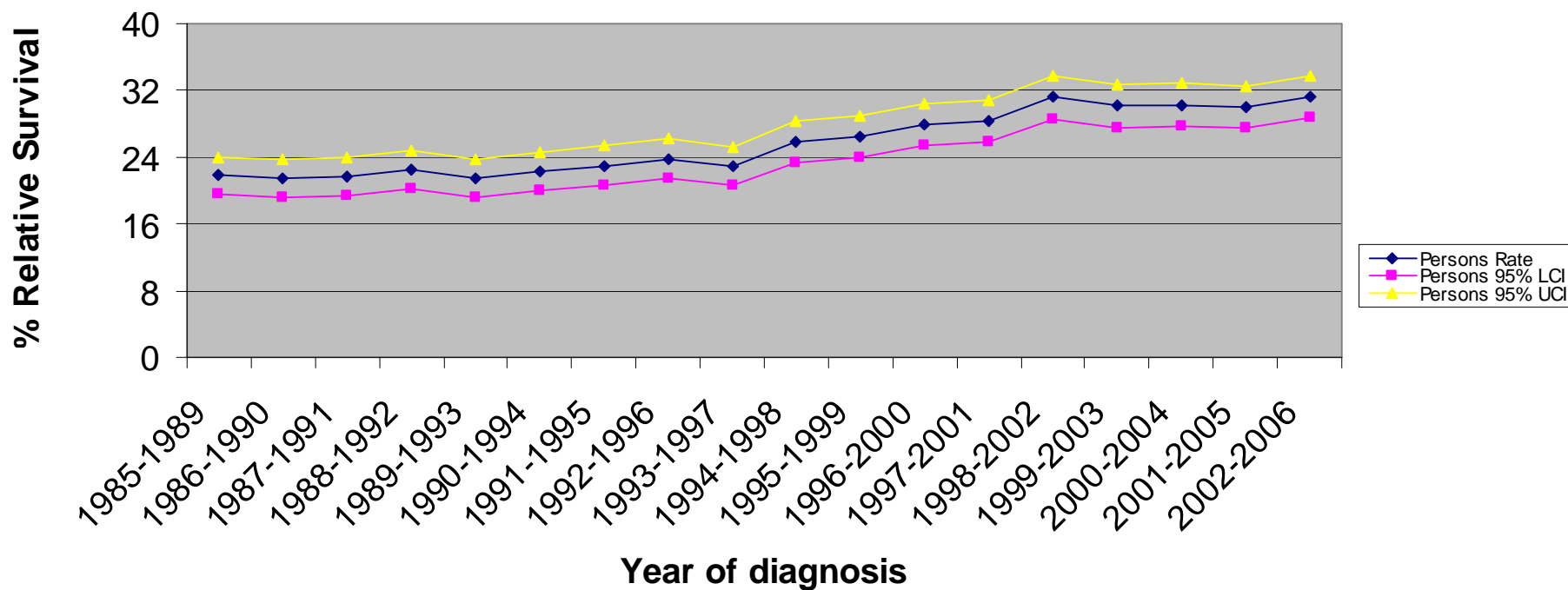
Trachea, Bronchus and Lung cancer (ICD10:C33-C34) : One year survival, West Hertfordshire PCT



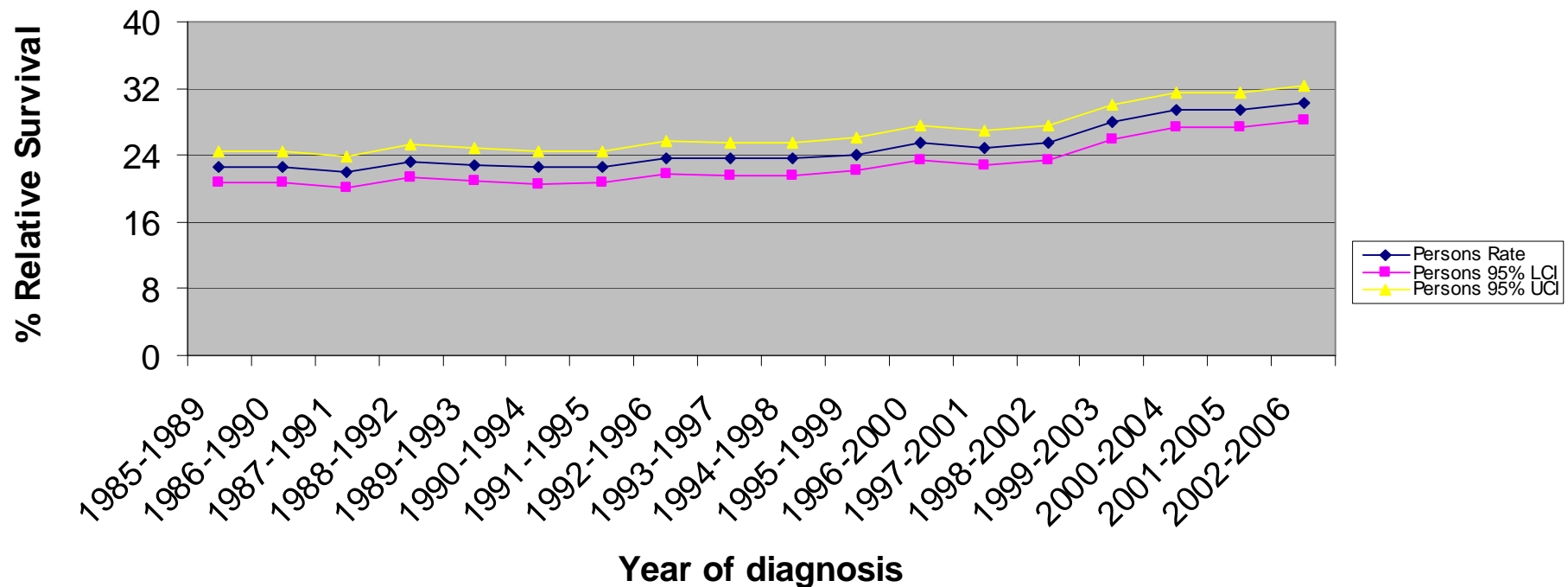
Trachea, Bronchus and Lung cancer (ICD10:C33-C34): One year survival, Peterborough PCT



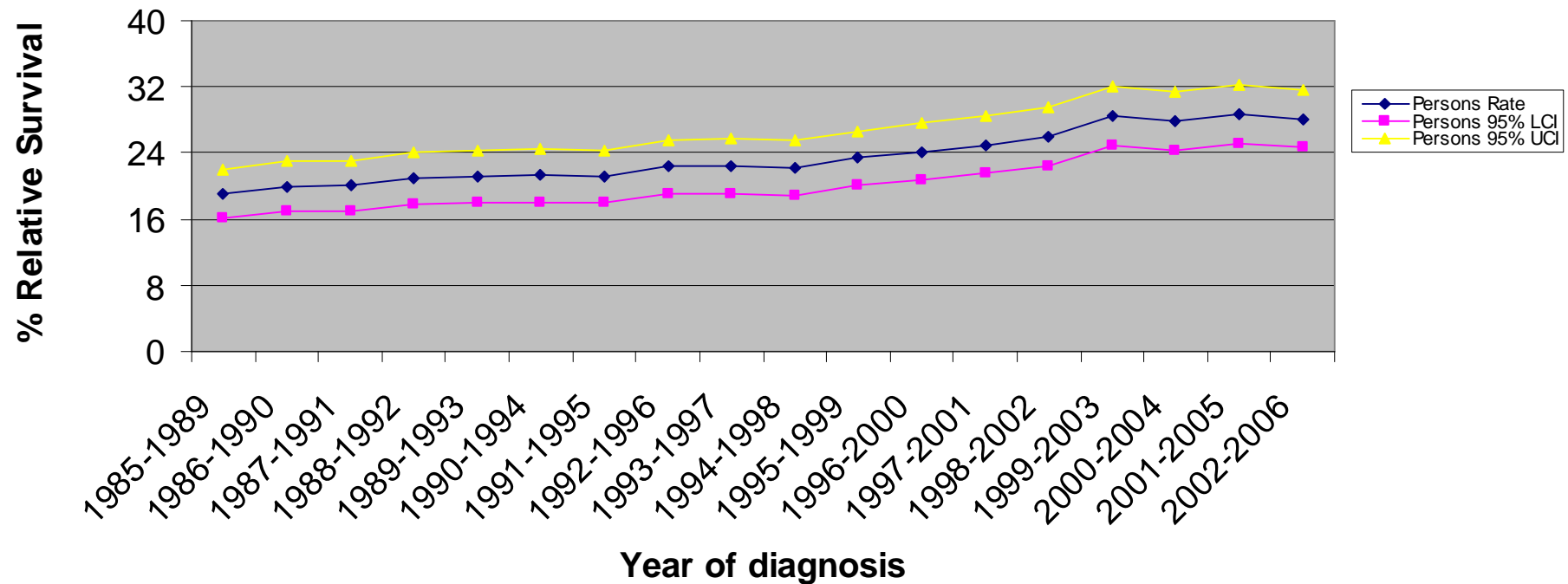
Trachea, Bronchus and Lung cancer (ICD10:C33-C34) : One year survival, Cambridgeshire PCT



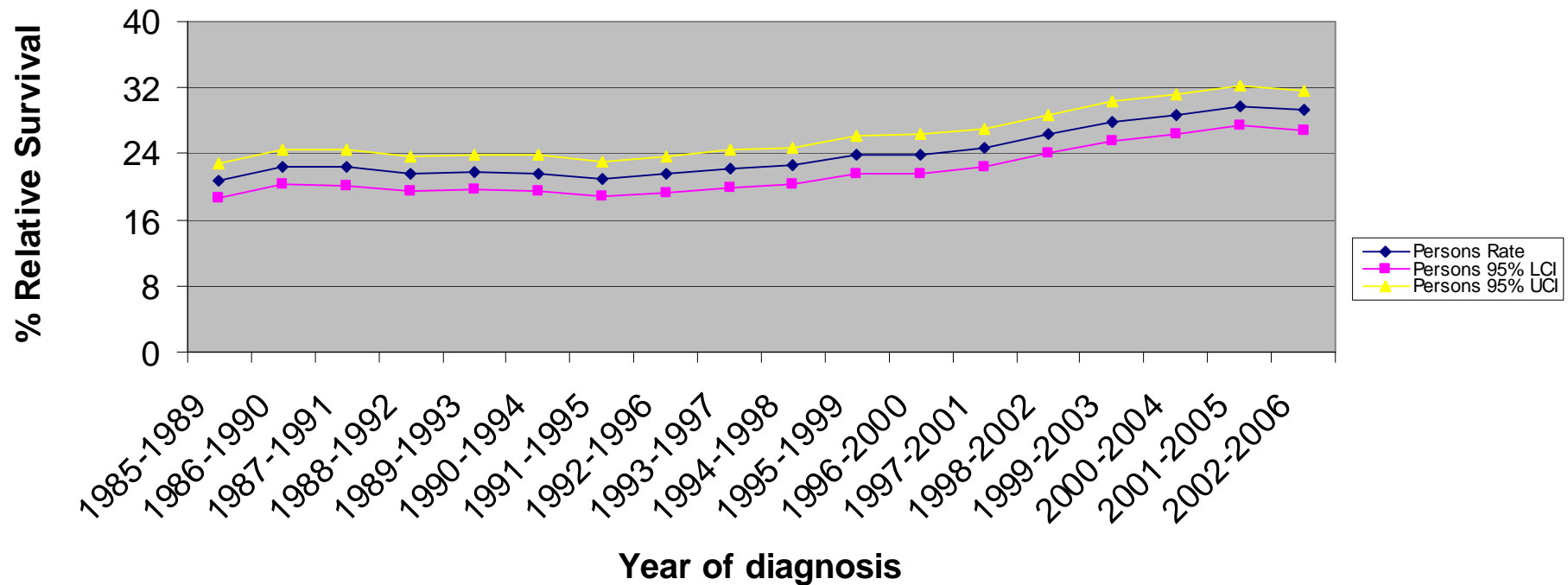
Trachea, Bronchus and Lung cancer (ICD10:C33-C34) : One year survival, Norfolk PCT



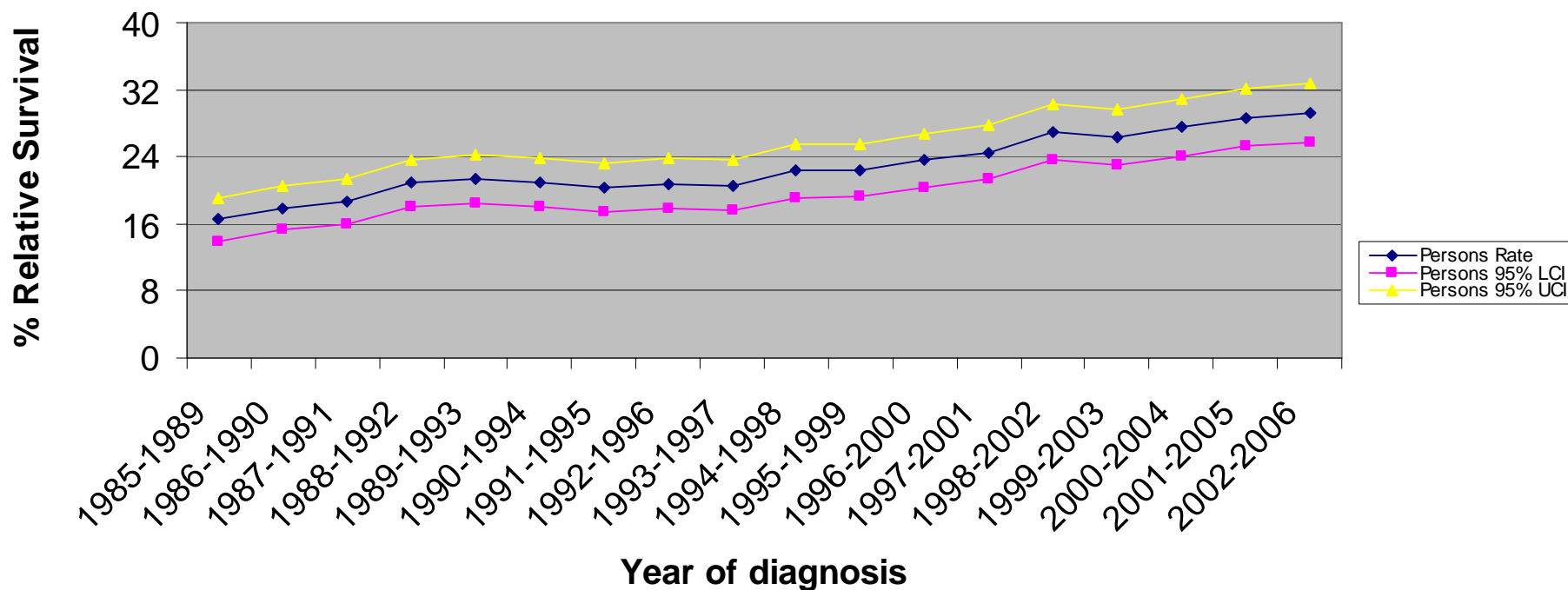
Trachea, Bronchus and Lung cancer (ICD10:C33-C34) : One year survival, Great Yarmouth and Waveney PCT



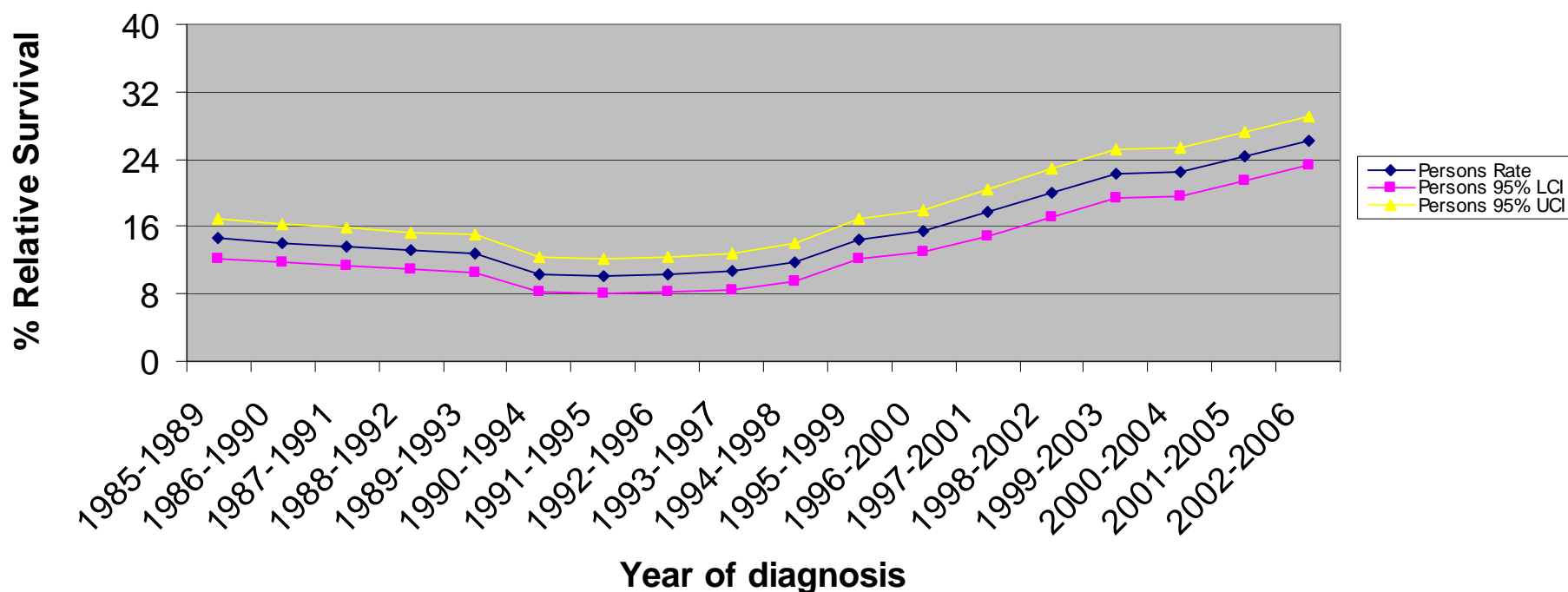
Trachea, Bronchus and Lung cancer (ICD10:C33-C34): One year survival, Suffolk PCT



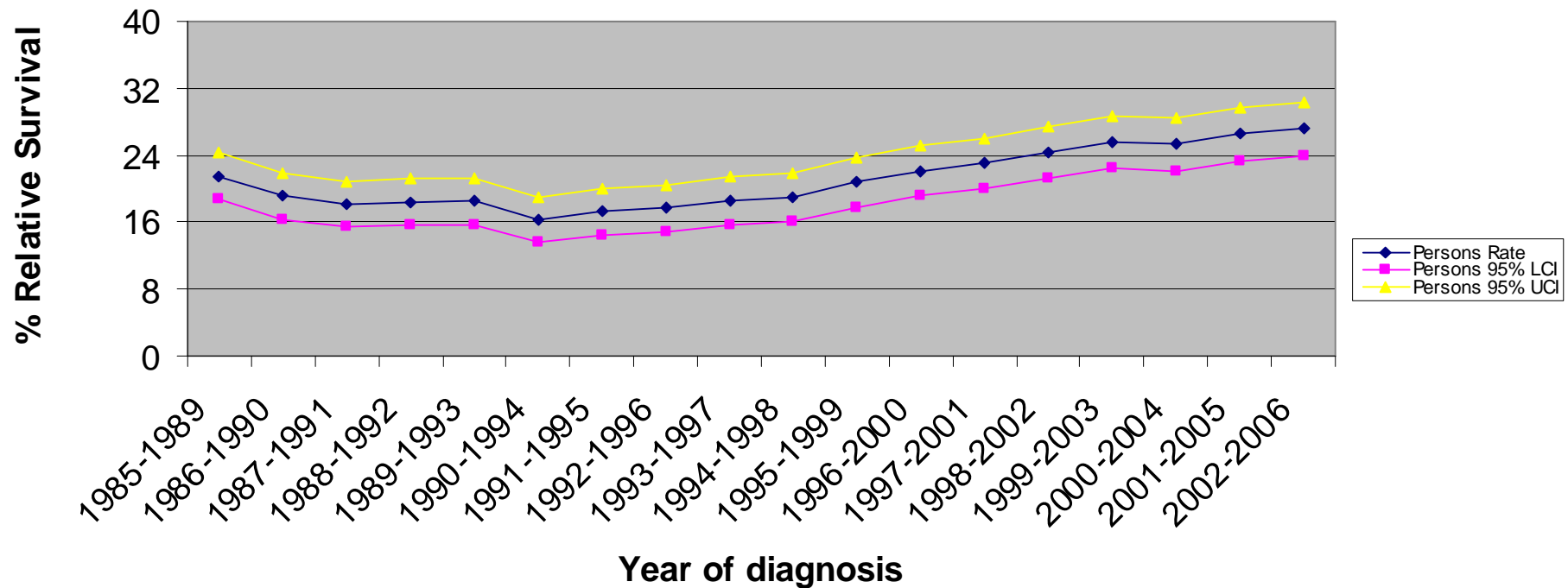
Trachea, Bronchus and Lung cancer (ICD10:C33-C34) : One year survival, West Essex PCT



Trachea, Bronchus and Lung cancer (ICD10:C33-C34) : One year survival, North East Essex PCT



Trachea, Bronchus and Lung cancer (ICD10:C33-C34) : One year survival, Mid Essex PCT



Trachea, Bronchus and Lung cancer (ICD10:C33-C34) : One year survival, South West Essex PCT

