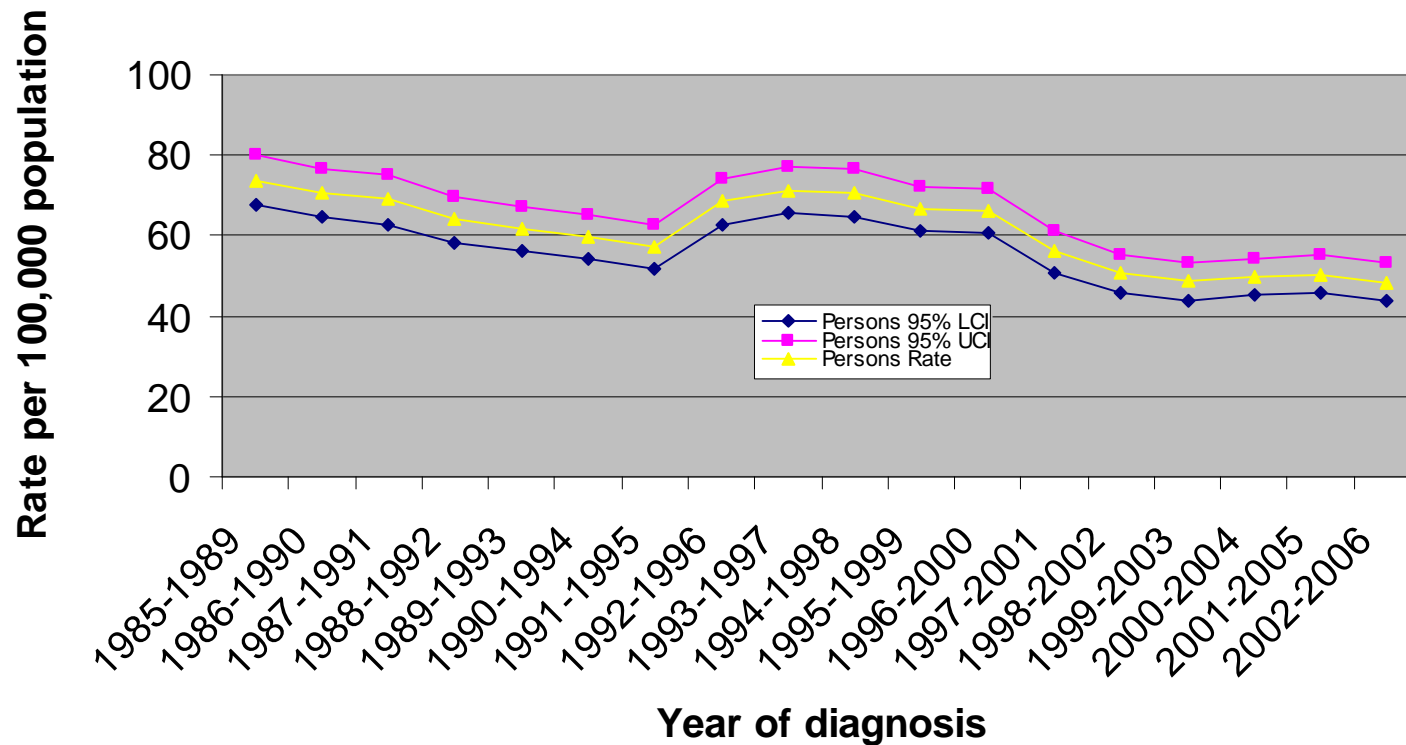
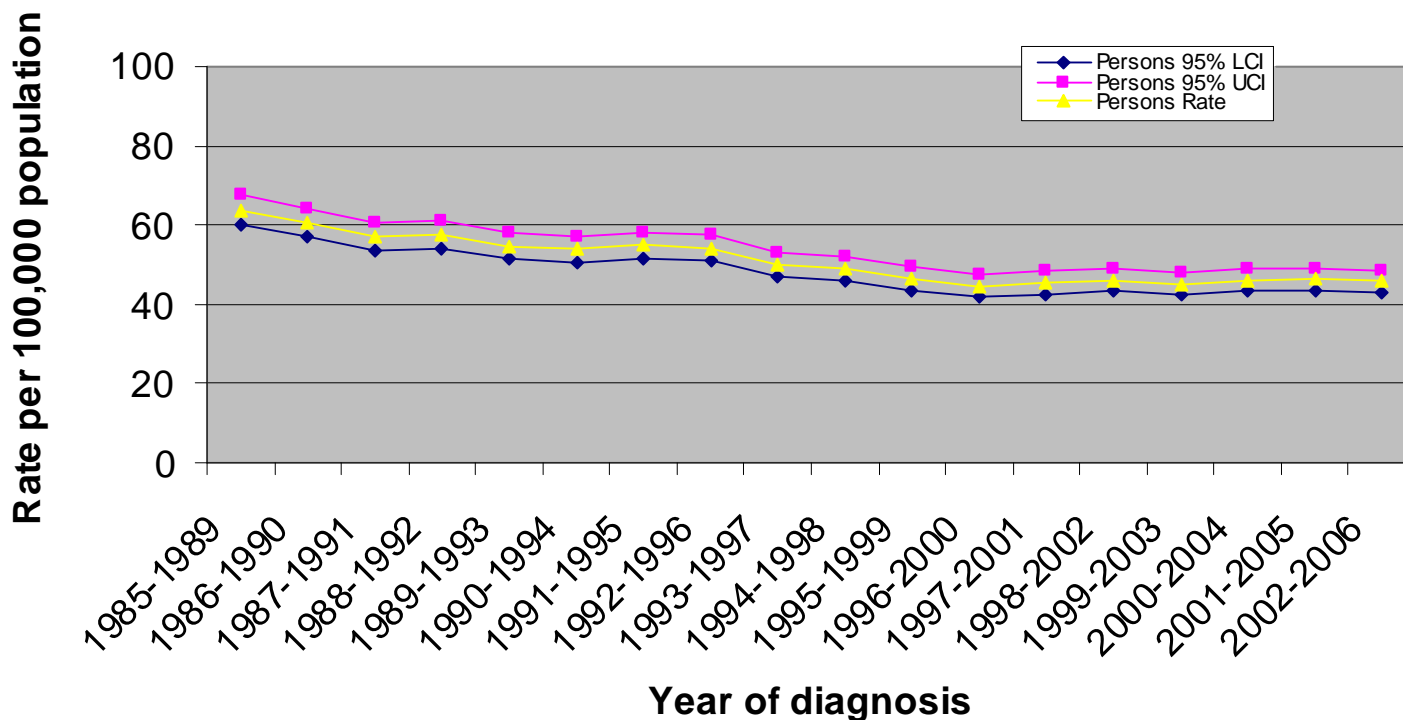


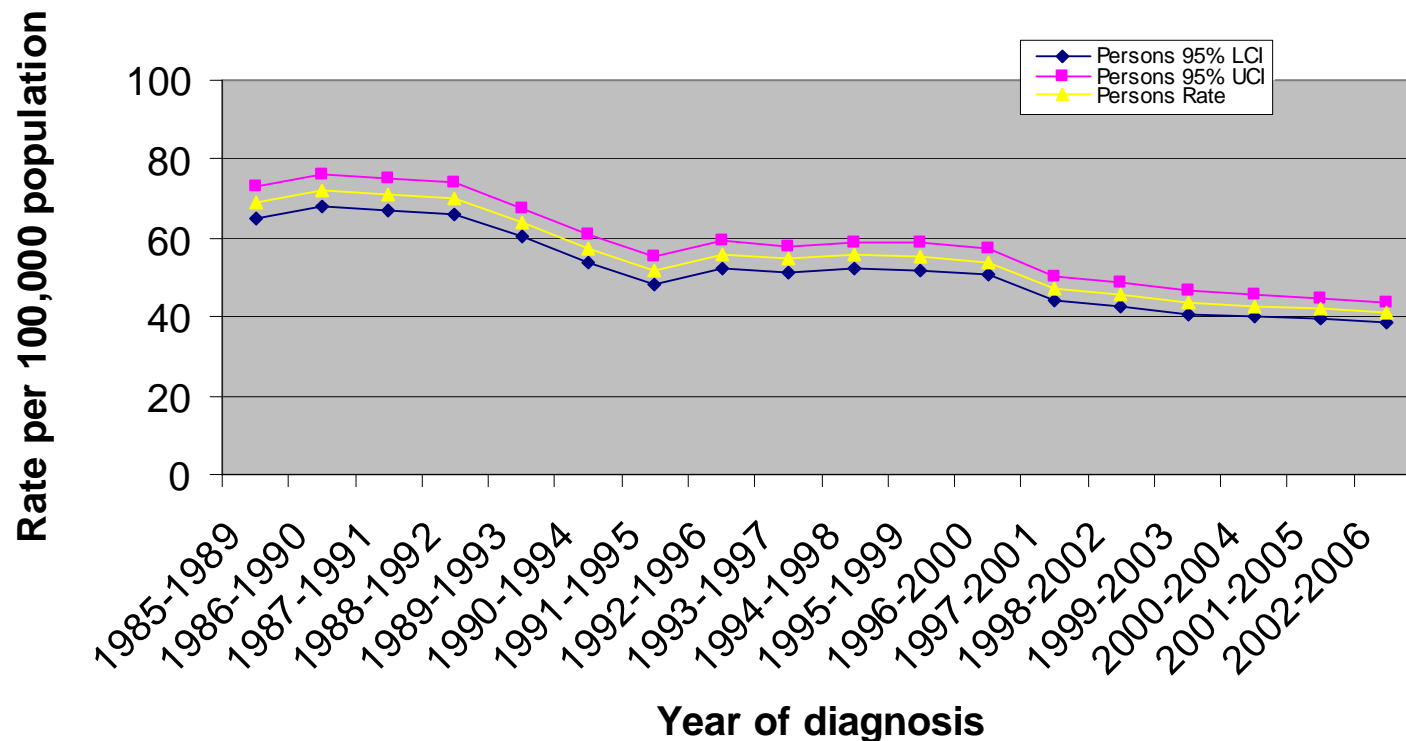
Incidence of Trachea, Bronchus and Lung cancer (ICD10:C33-C34) in Luton PCT: European age standardised rates and 95% Confidence Intervals



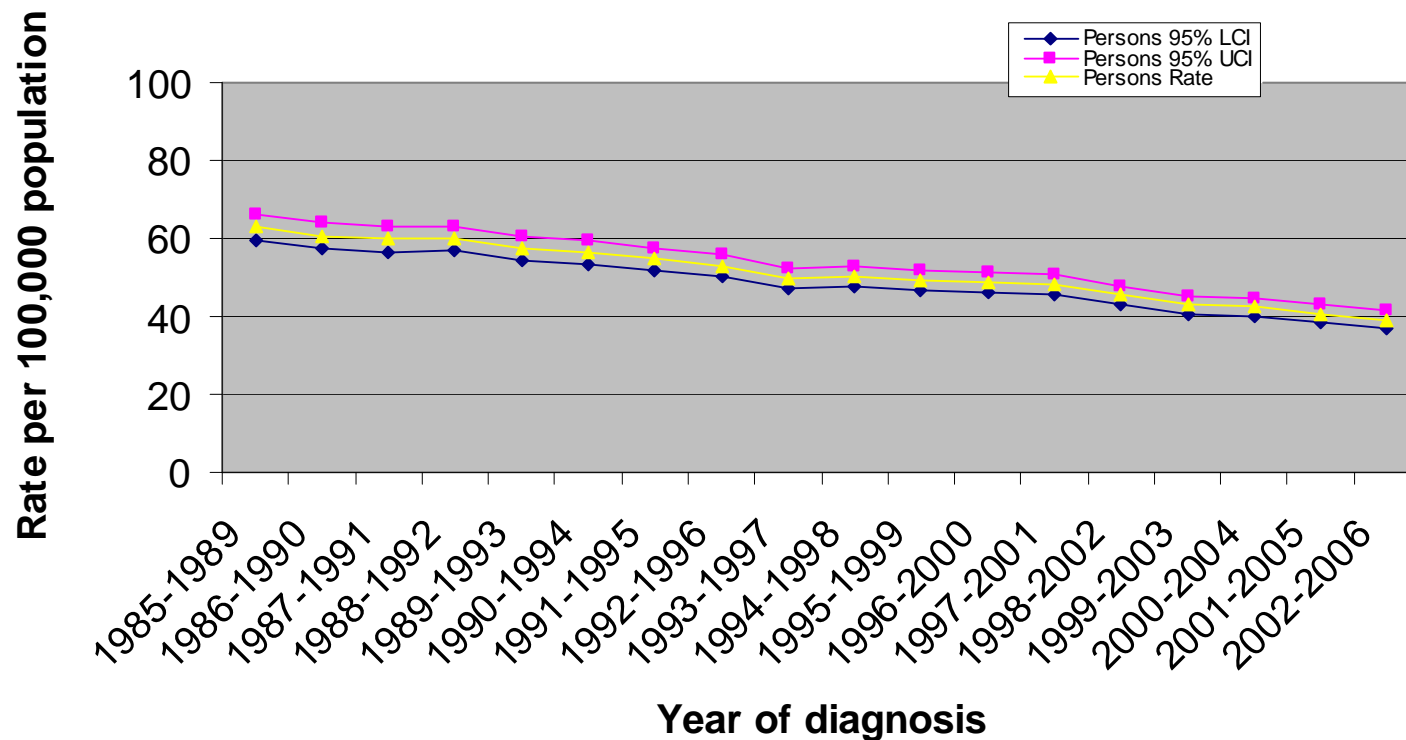
Incidence of Trachea, Bronchus and Lung cancer (ICD10:C33-C34) in South East Essex PCT: European age standardised rates and 95% Confidence Intervals



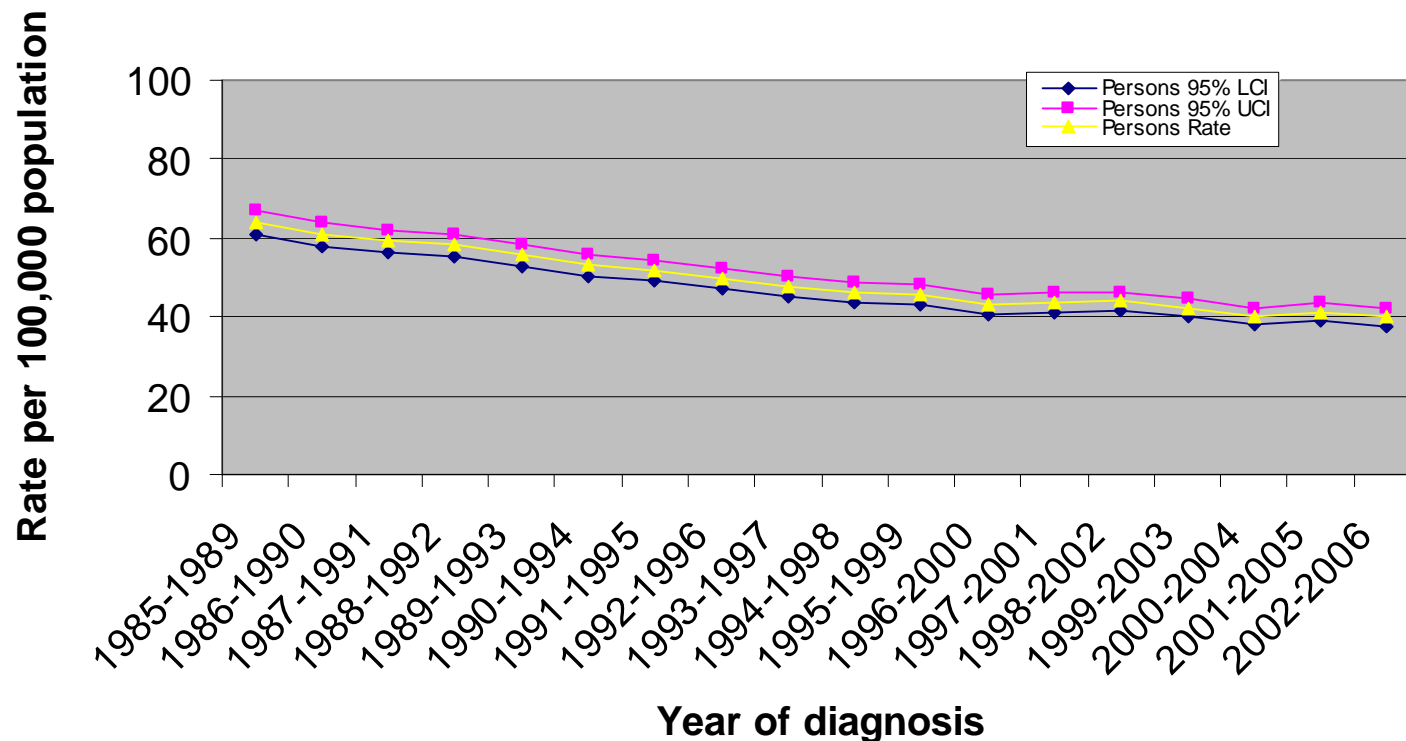
Incidence of Trachea, Bronchus and Lung cancer (ICD10:C33-C34) in Bedfordshire PCT: European age standardised rates and 95% Confidence Intervals



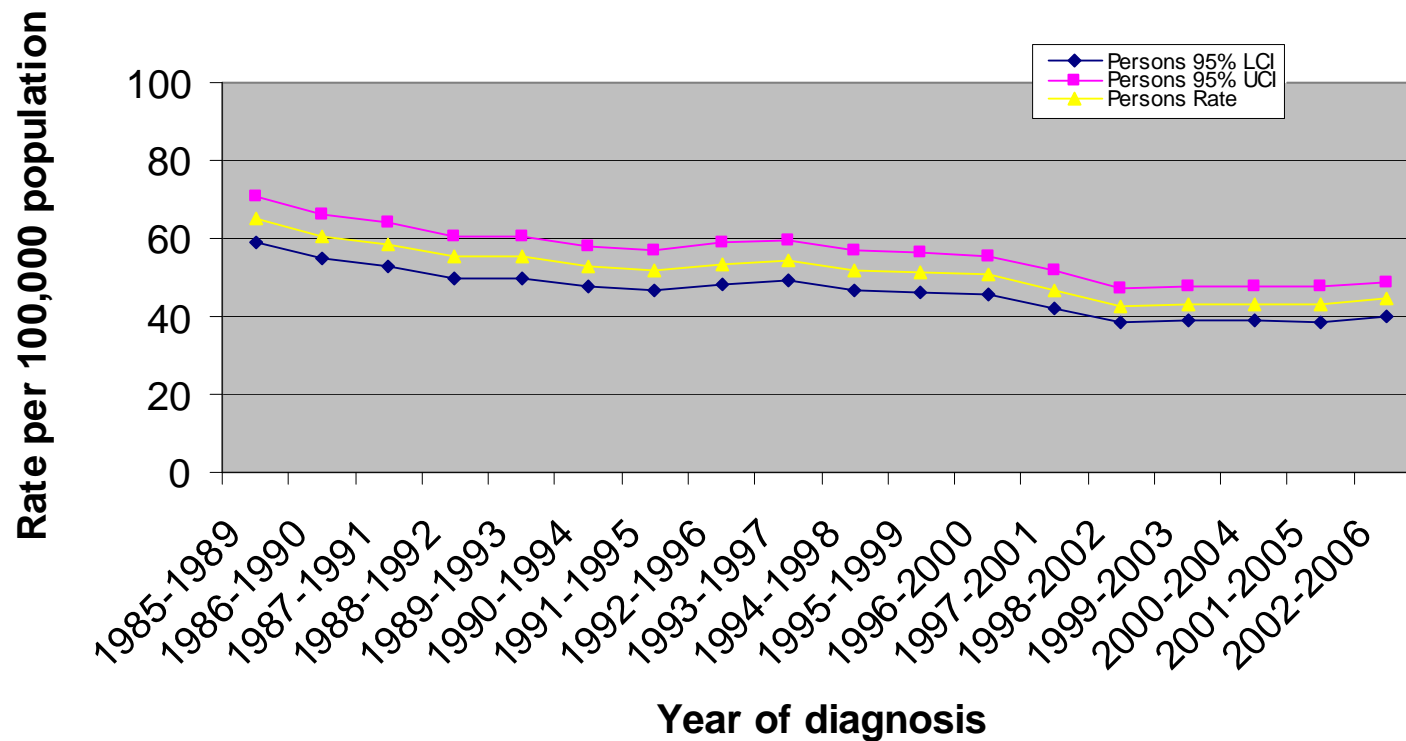
Incidence of Trachea, Bronchus and Lung cancer (ICD10:C33-C34) in East and North Hertfordshire PCT: European age standardised rates and 95% Confidence Intervals



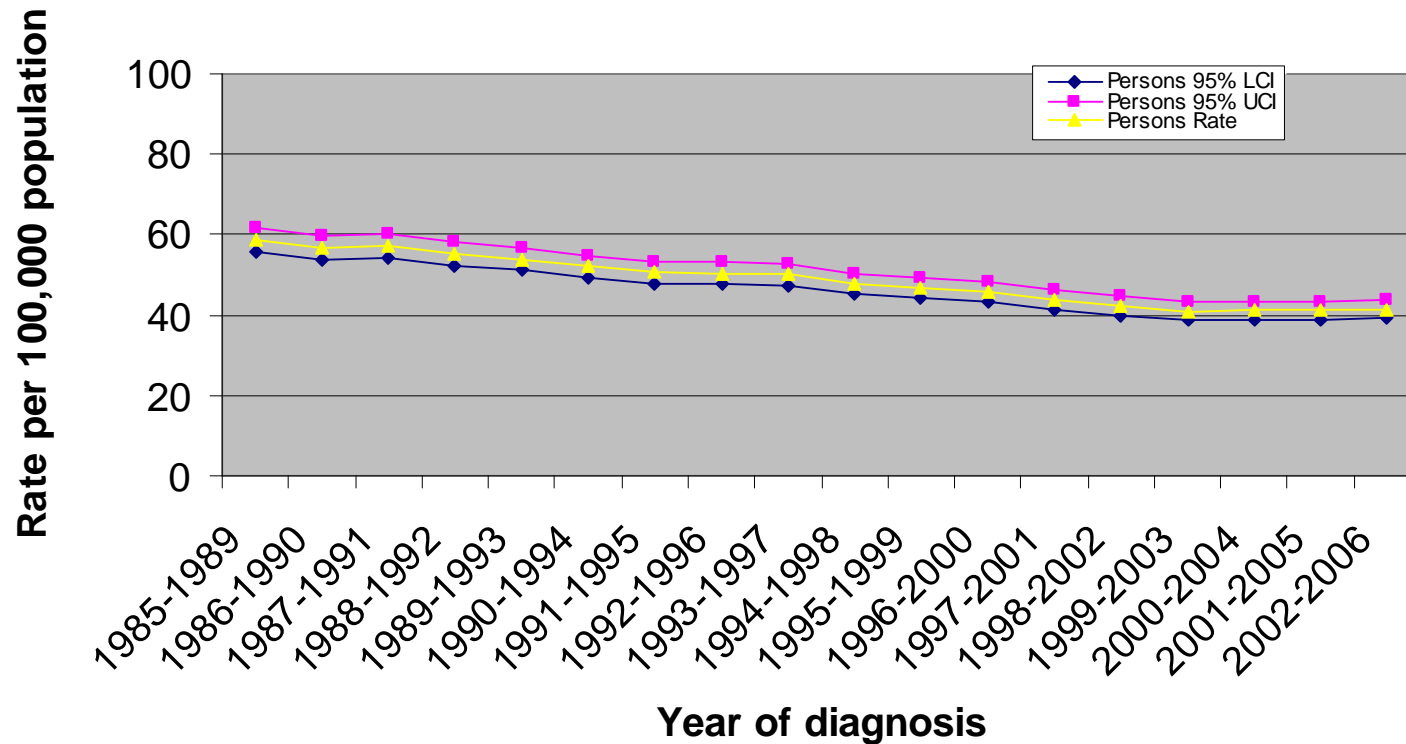
Incidence of Trachea, Bronchus and Lung cancer (ICD10:C33-C34) in West Hertfordshire PCT: European age standardised rates and 95% Confidence Intervals



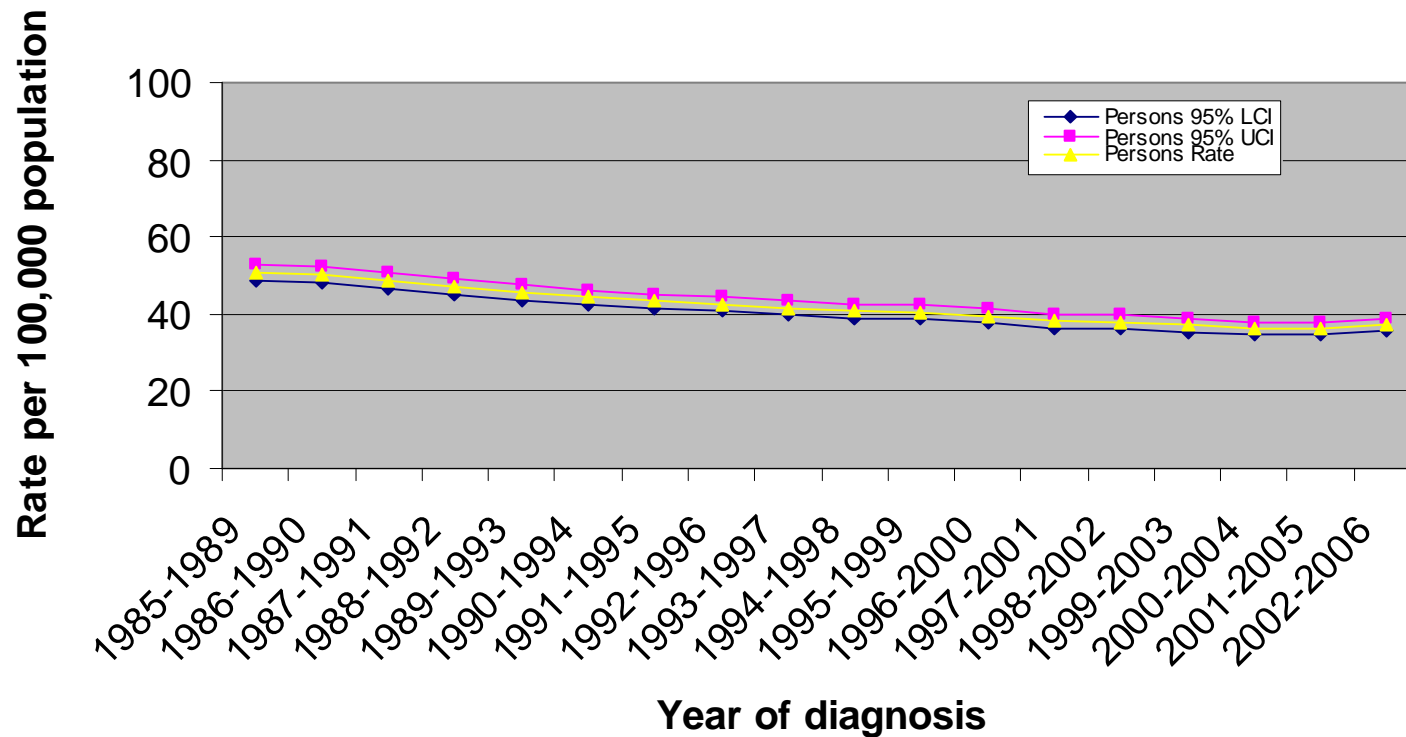
Incidence of Trachea, Bronchus and Lung cancer (ICD10:C33-C34) in Peterborough PCT: European age standardised rates and 95% Confidence Intervals



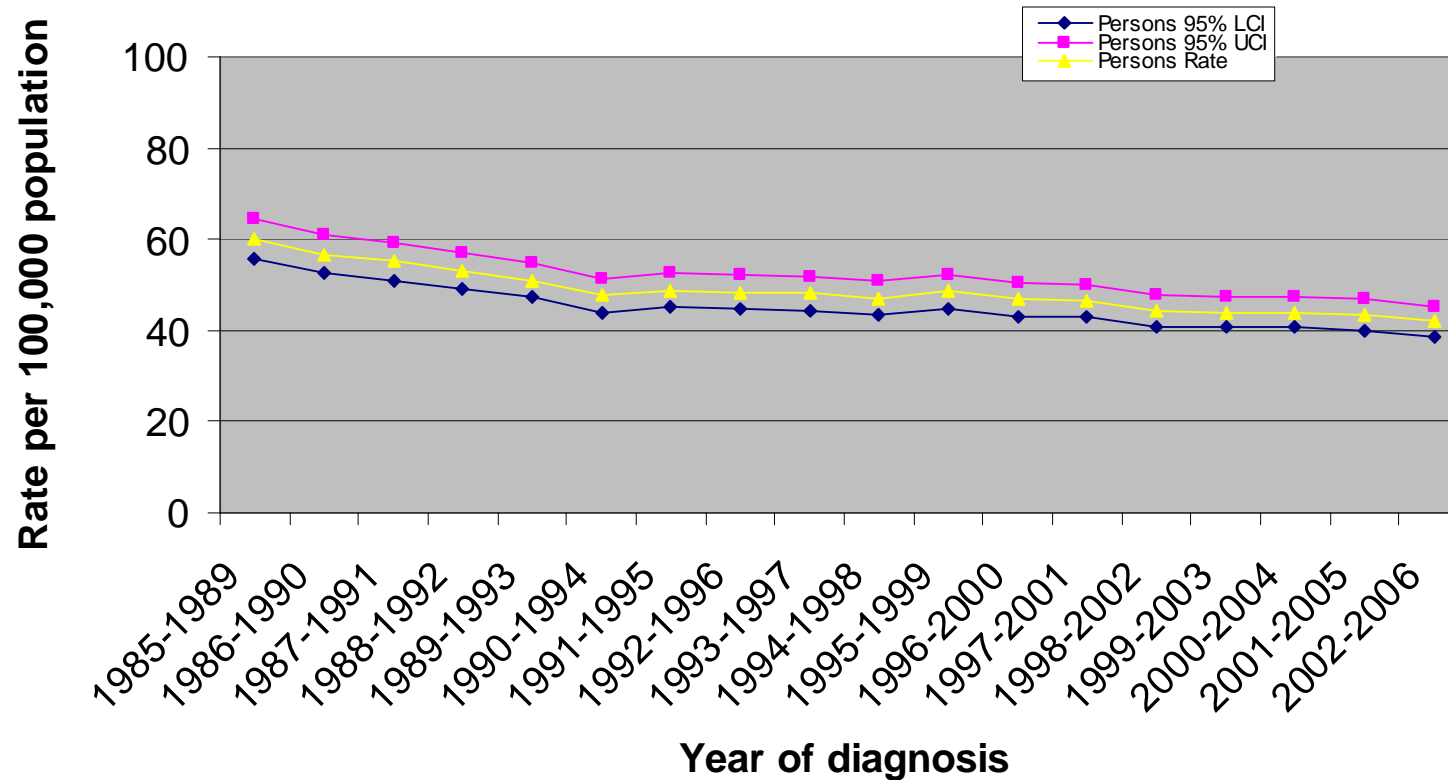
Incidence of Trachea, Bronchus and Lung cancer (ICD10:C33-C34) in Cambridgeshire PCT: European age standardised rates and 95% Confidence Intervals



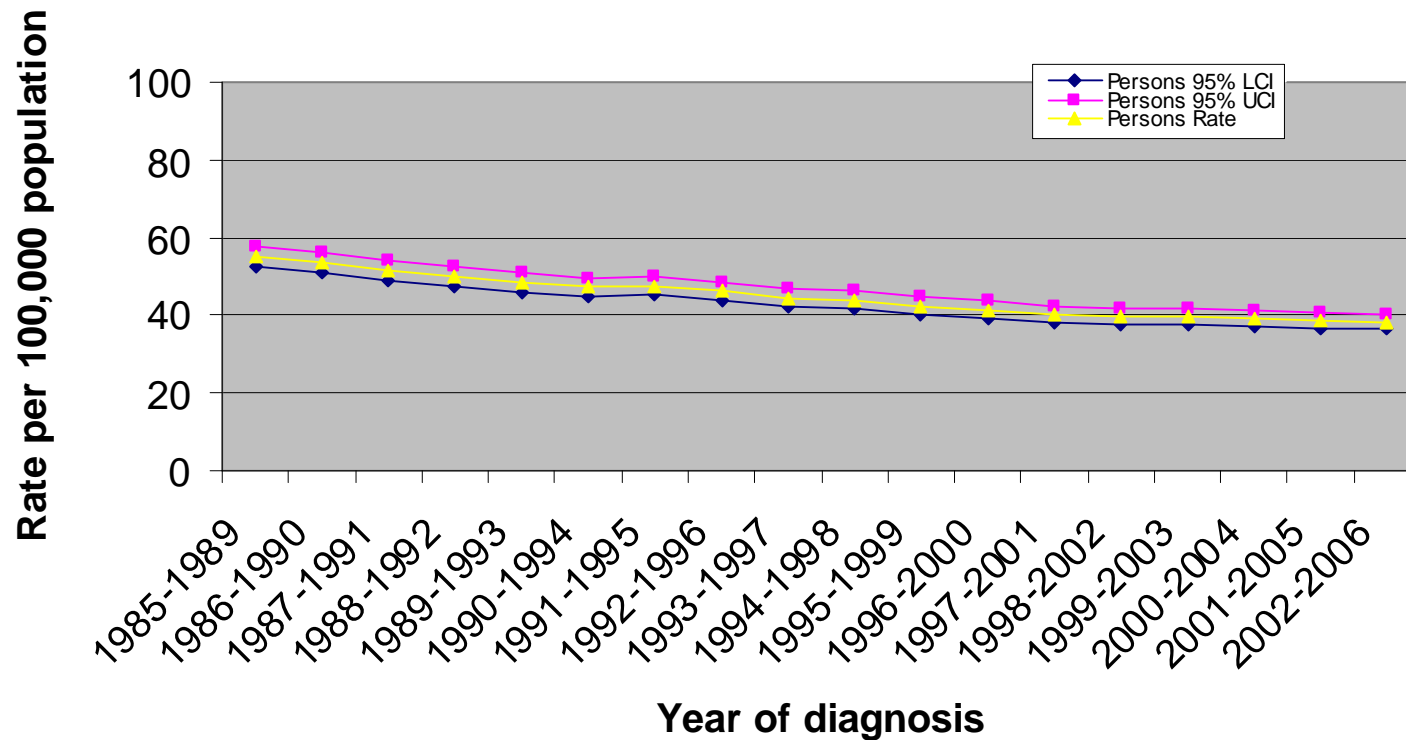
Incidence of Trachea, Bronchus and Lung cancer (ICD10:C33-C34) in Norfolk PCT: European age standardised rates and 95% Confidence Intervals



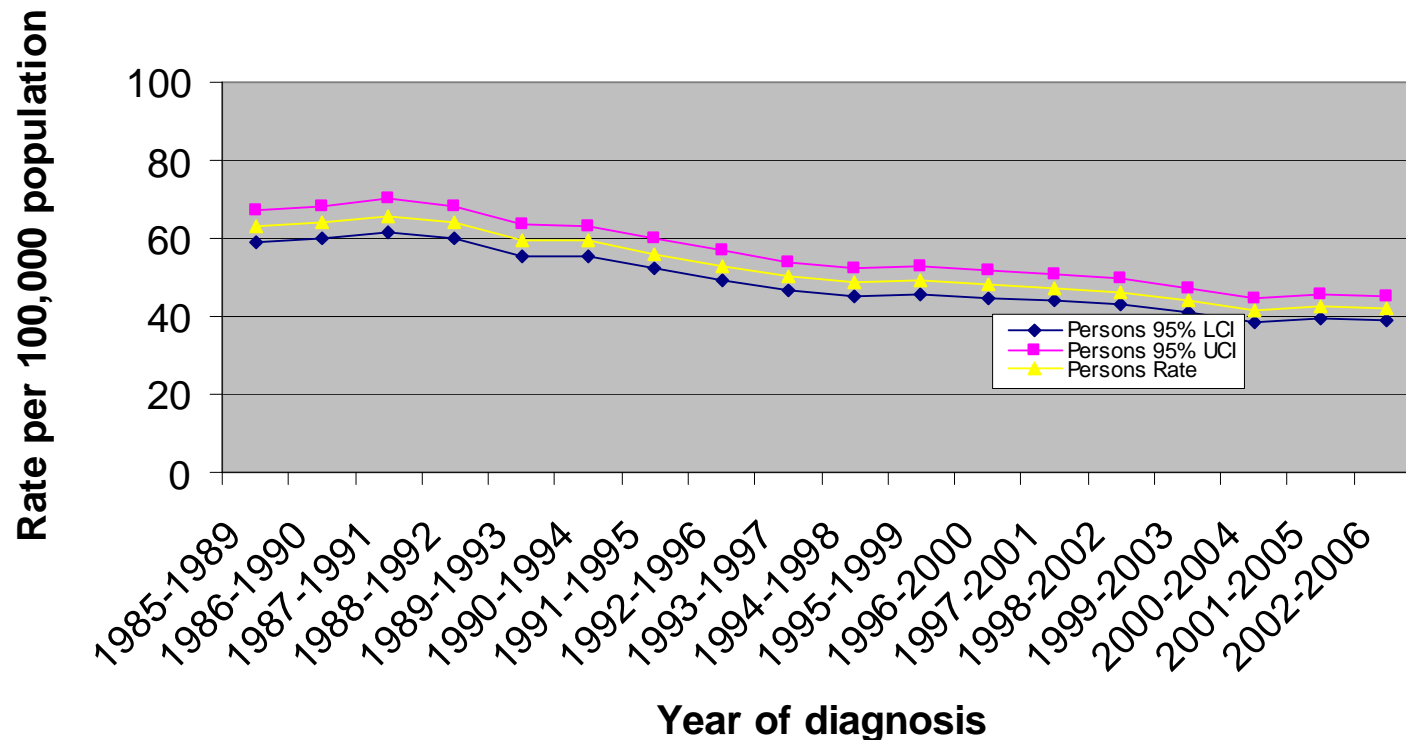
Incidence of Trachea, Bronchus and Lung cancer (ICD10:C33-C34) in Great Yarmouth and Waveney PCT: European age standardised rates and 95% Confidence Intervals



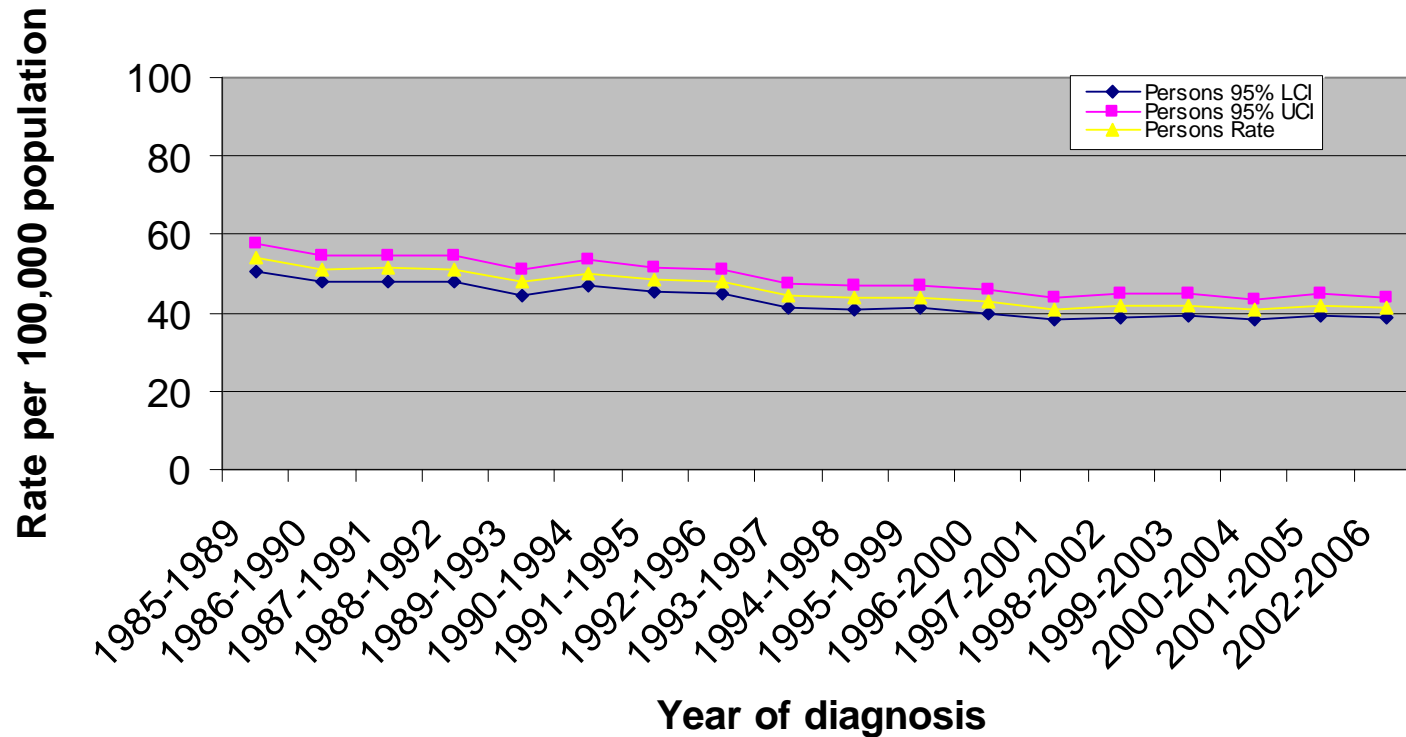
Incidence of Trachea, Bronchus and Lung cancer (ICD10:C33-C34) in Suffolk PCT: European age standardised rates and 95% Confidence Intervals



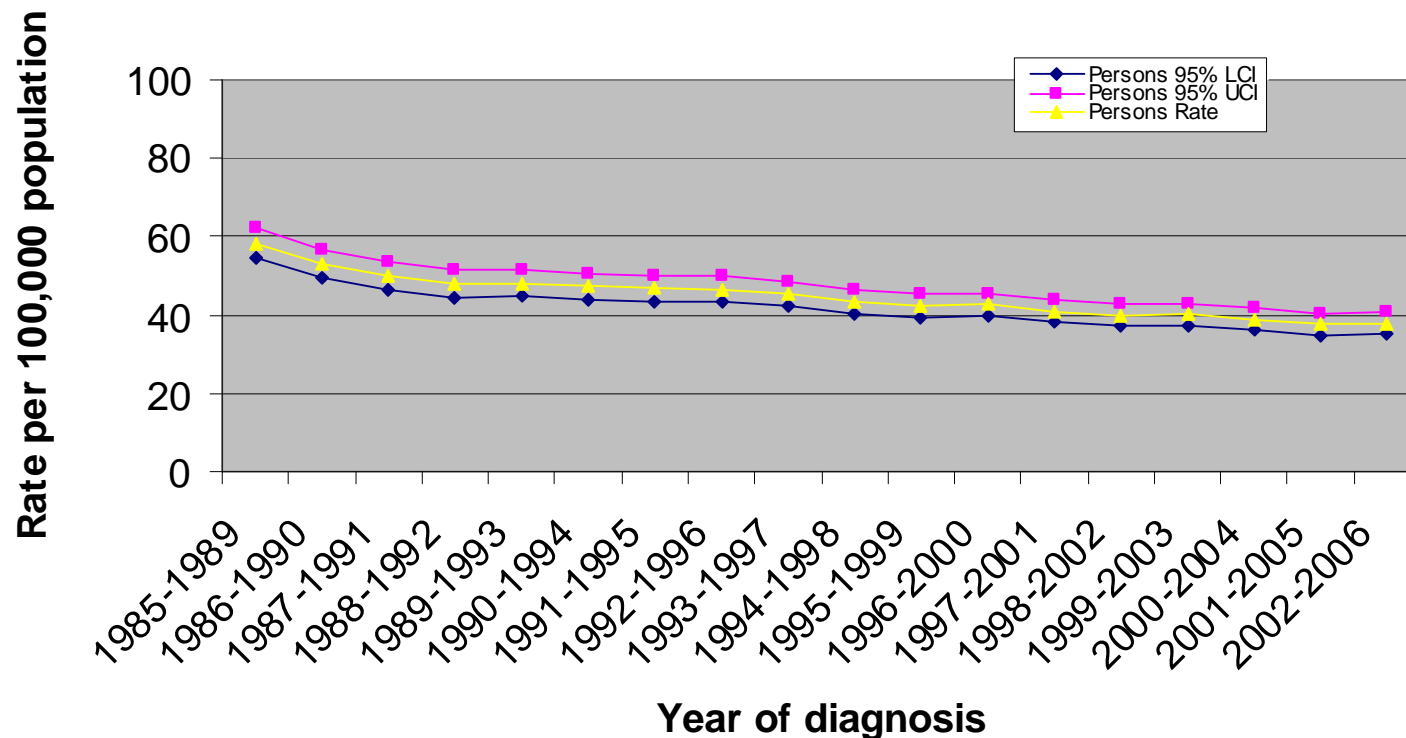
Incidence of Trachea, Bronchus and Lung cancer (ICD10:C33-C34) in West Essex PCT: European age standardised rates and 95% Confidence Intervals



Incidence of Trachea, Bronchus and Lung cancer (ICD10:C33-C34) in North East Essex PCT: European age standardised rates and 95% Confidence Intervals



Incidence of Trachea, Bronchus and Lung cancer (ICD10:C33-C34) in Mid Essex PCT: European age standardised rates and 95% Confidence Intervals



Incidence of Trachea, Bronchus and Lung cancer (ICD10:C33-C34) in South West Essex PCT: European age standardised rates and 95% Confidence Intervals

