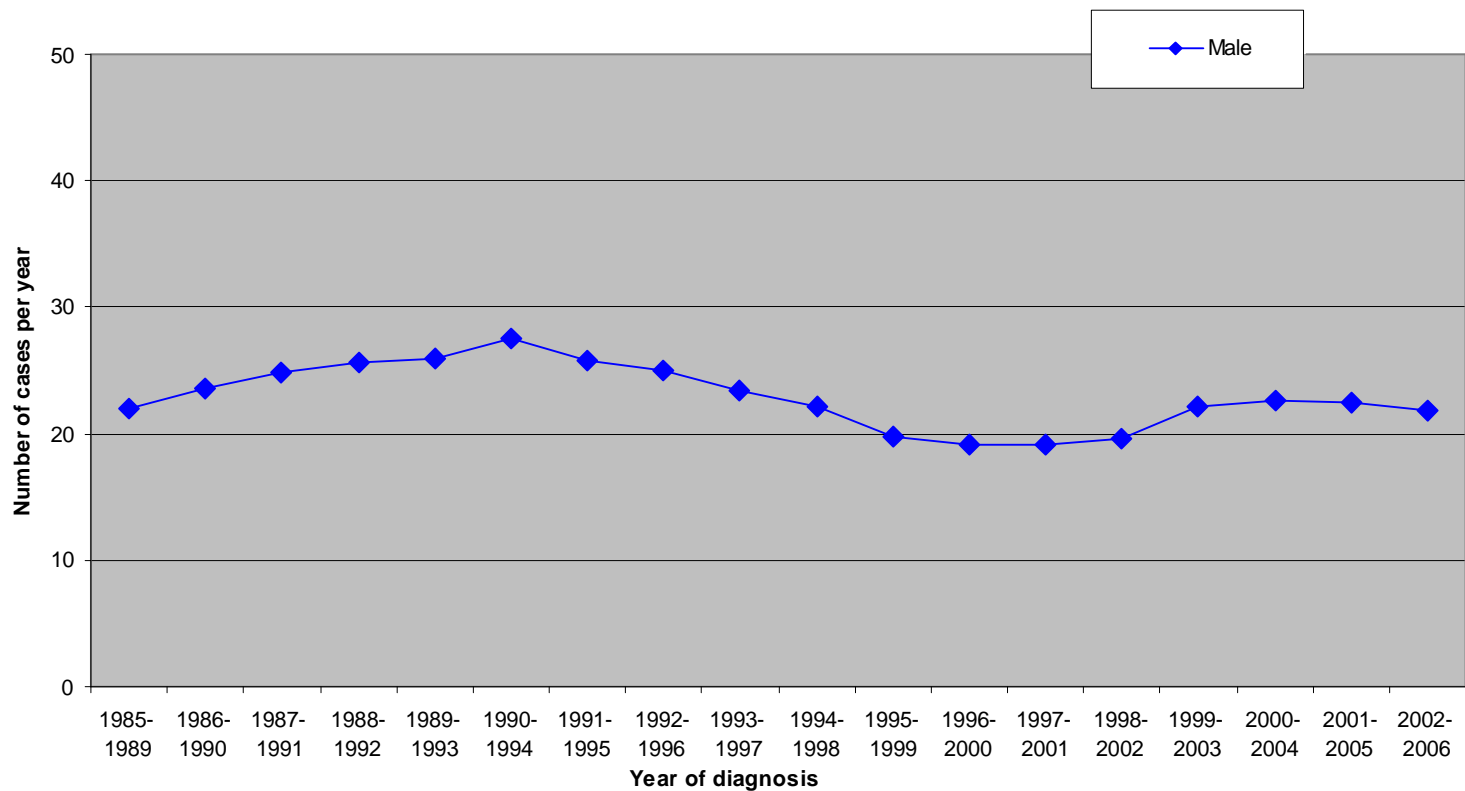
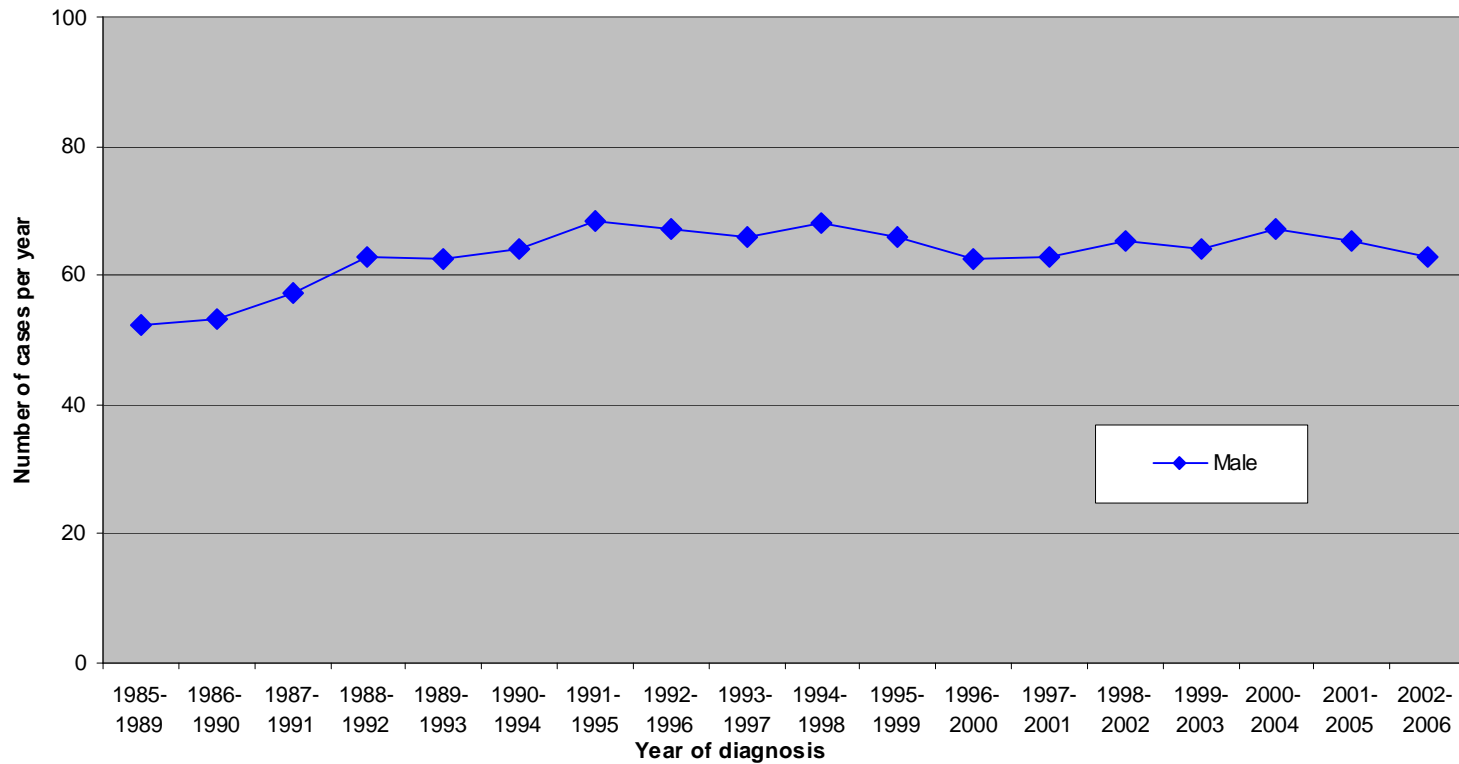


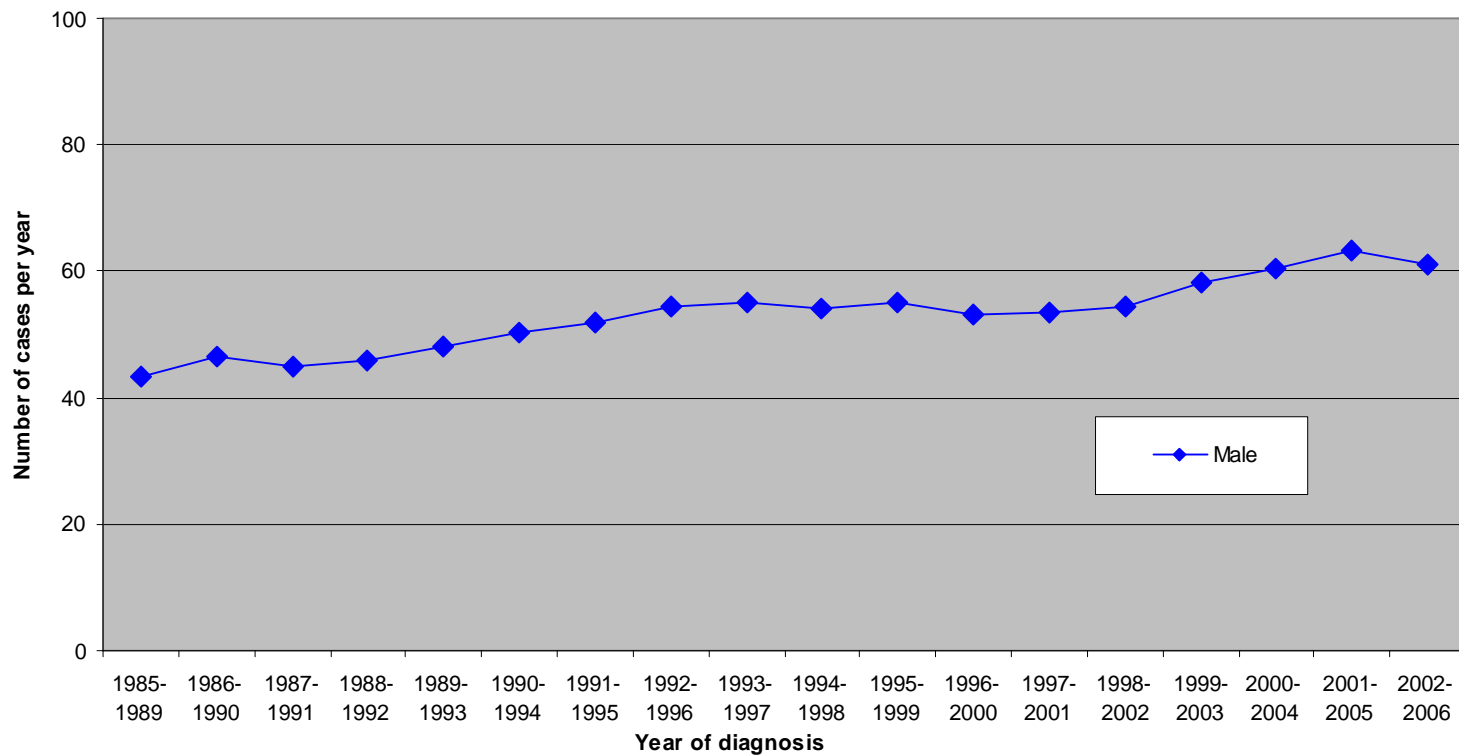
Mortality from Prostate Cancer (ICD10:C61) in Luton PCT : Number of Cases



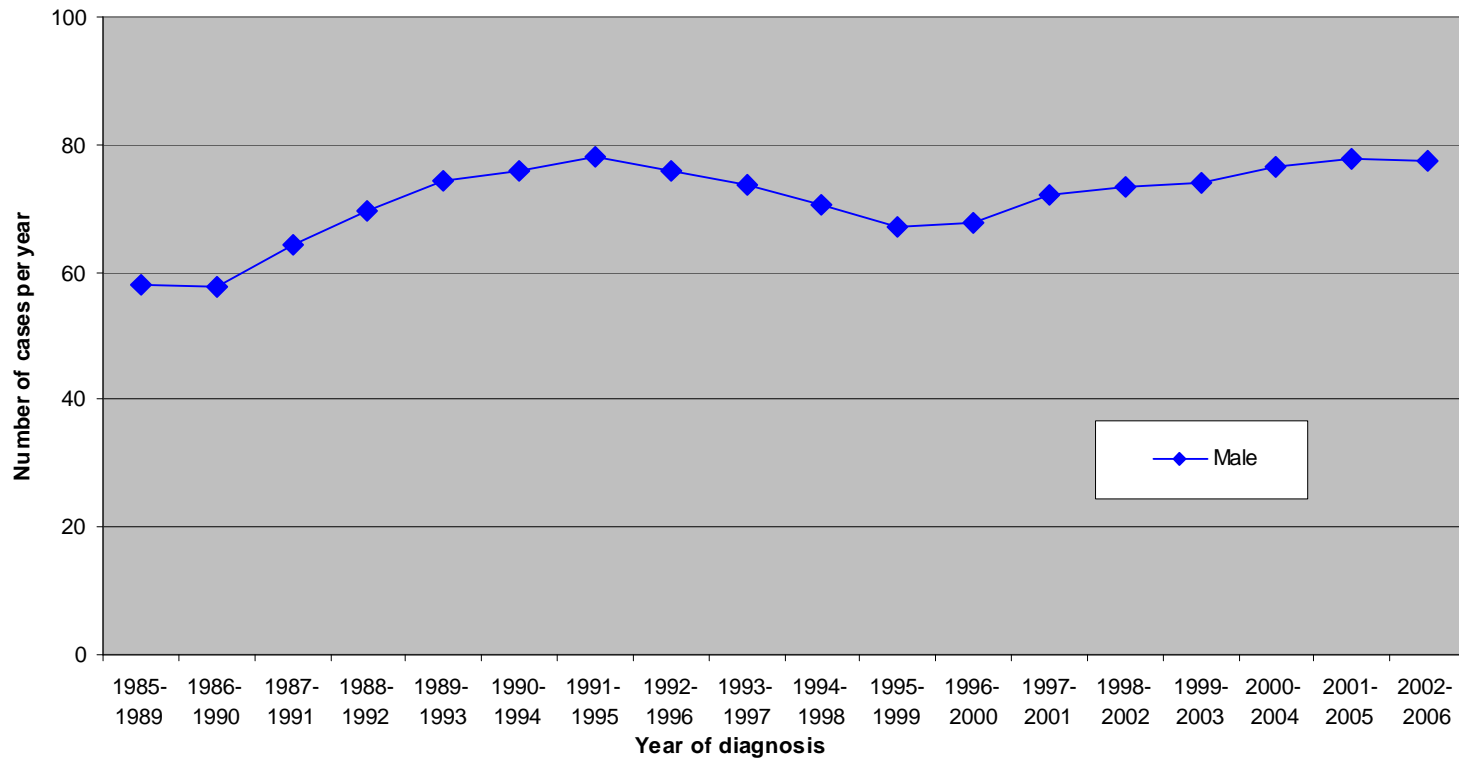
Mortality from Prostate Cancer (ICD10:C61) in South East Essex PCT : Number of Cases



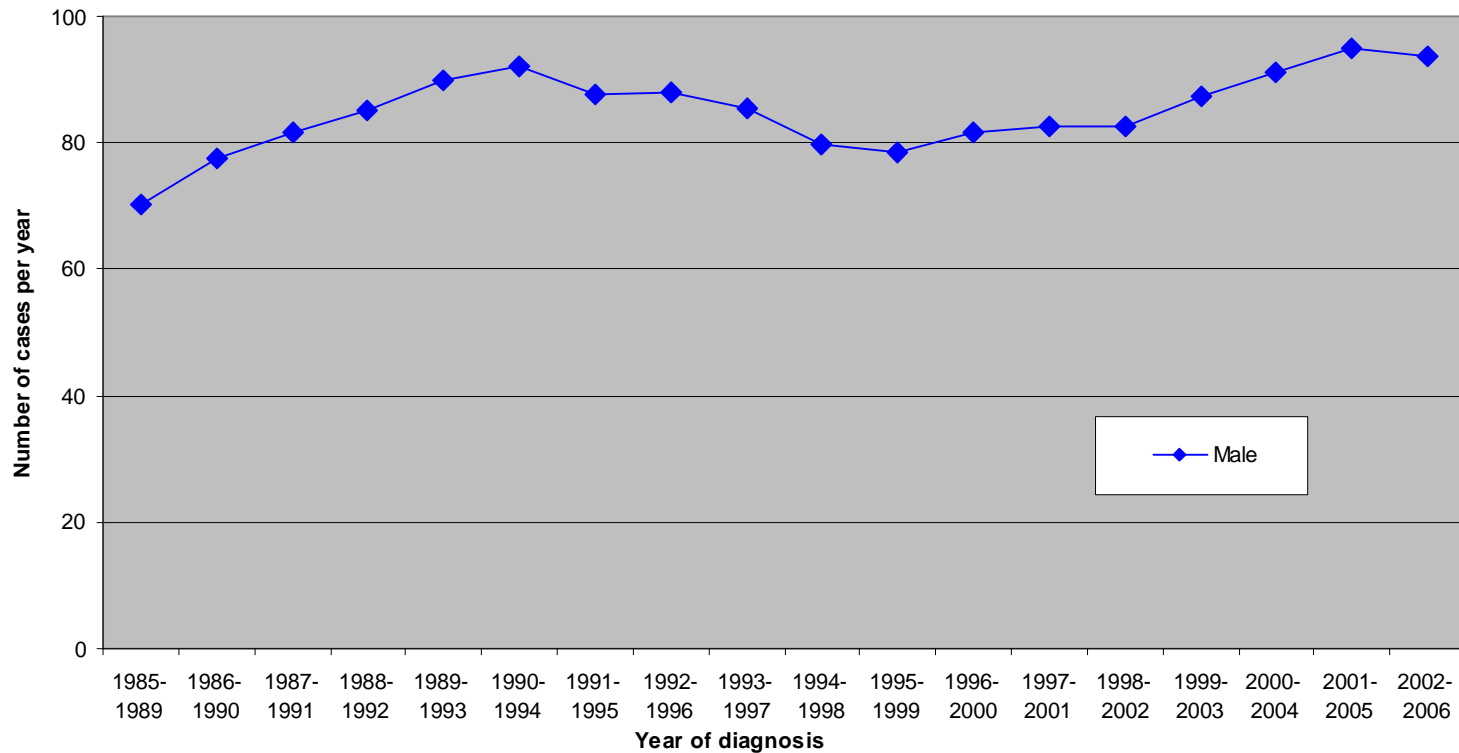
Mortality from Prostate Cancer (ICD10:C61) in Bedfordshire PCT : Number of Cases



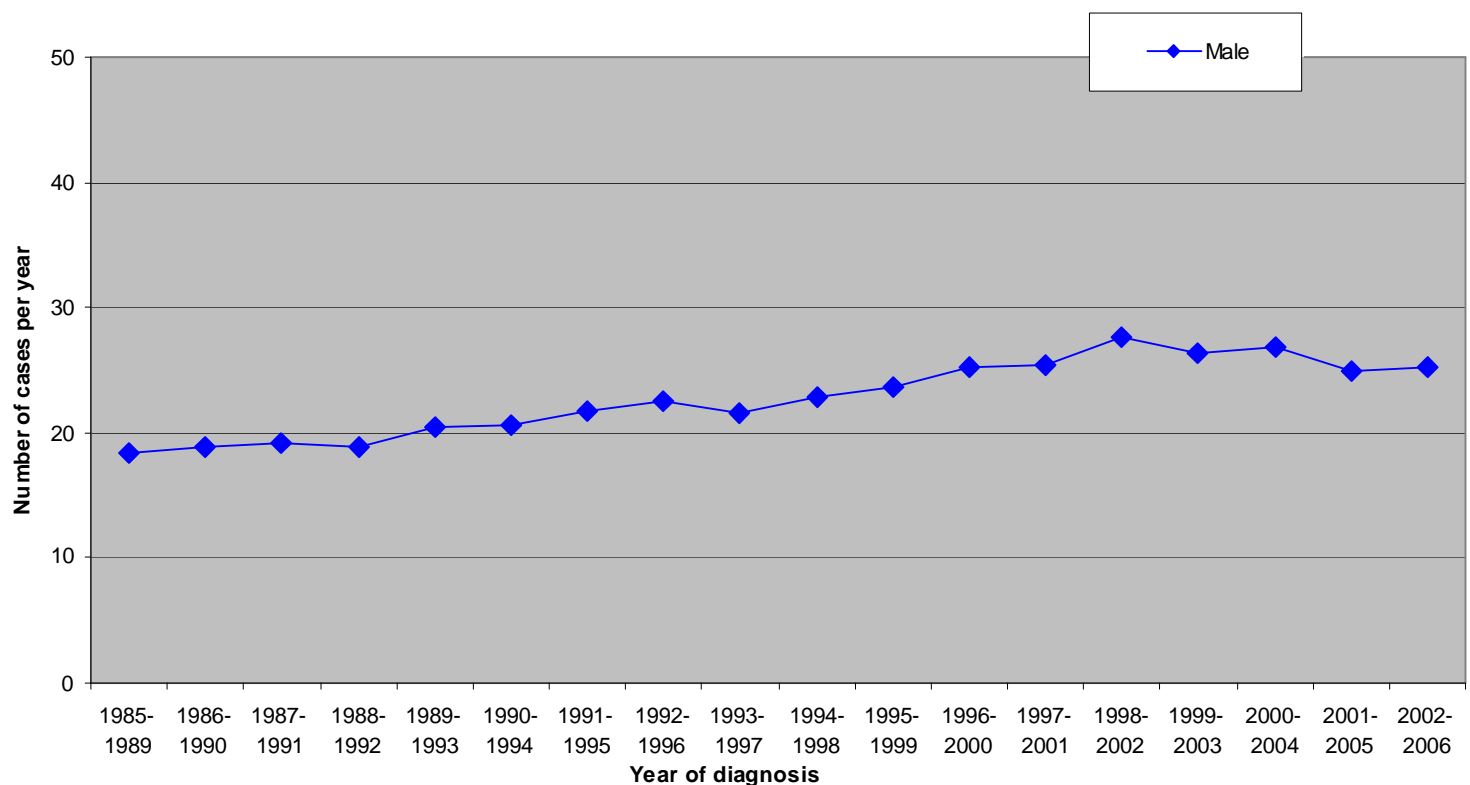
Mortality from Prostate Cancer (ICD10:C61) in East and North Hertfordshire PCT : Number of Cases



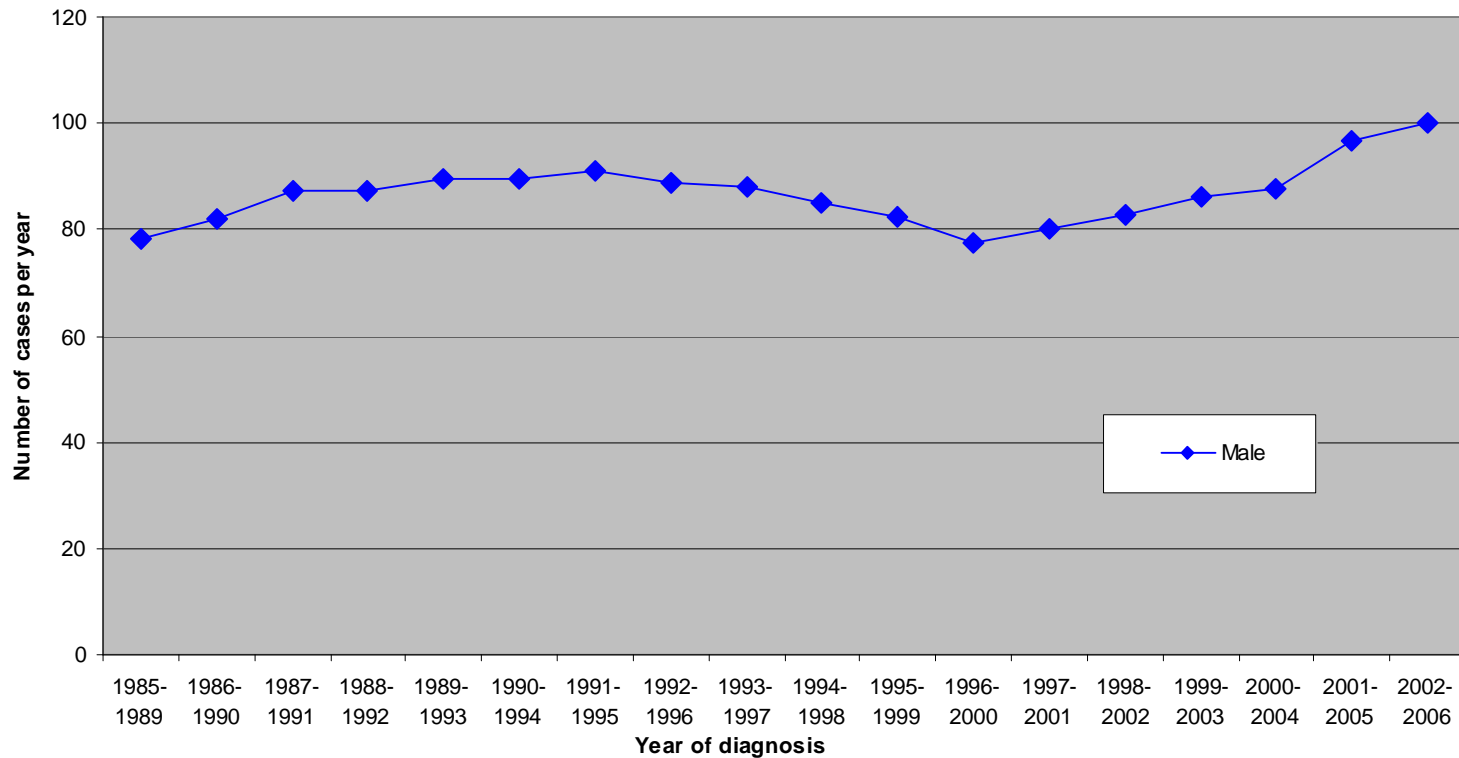
Mortality from Prostate Cancer (ICD10:C61) in West Hertfordshire PCT : Number of Cases



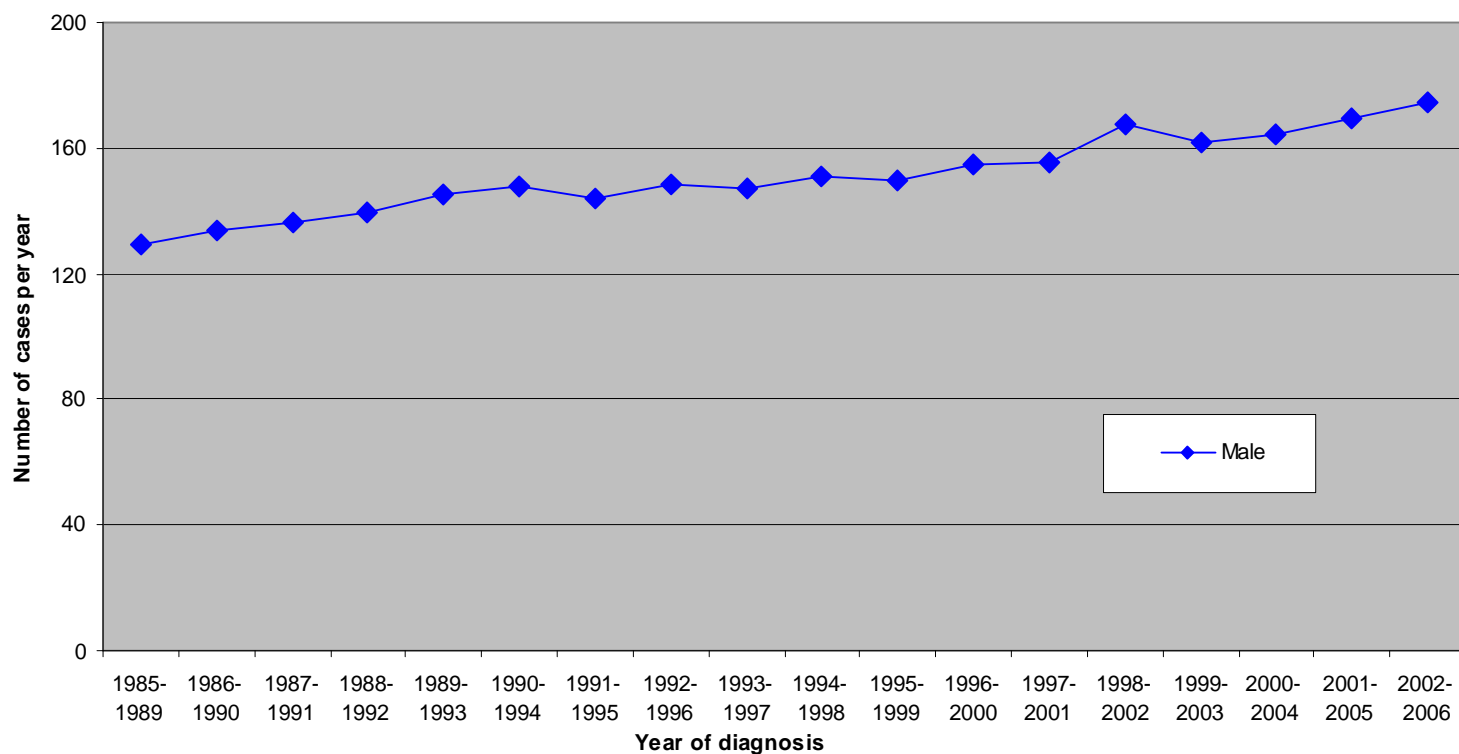
Mortality from Prostate Cancer (ICD10:C61) in Peterborough PCT : Number of Cases



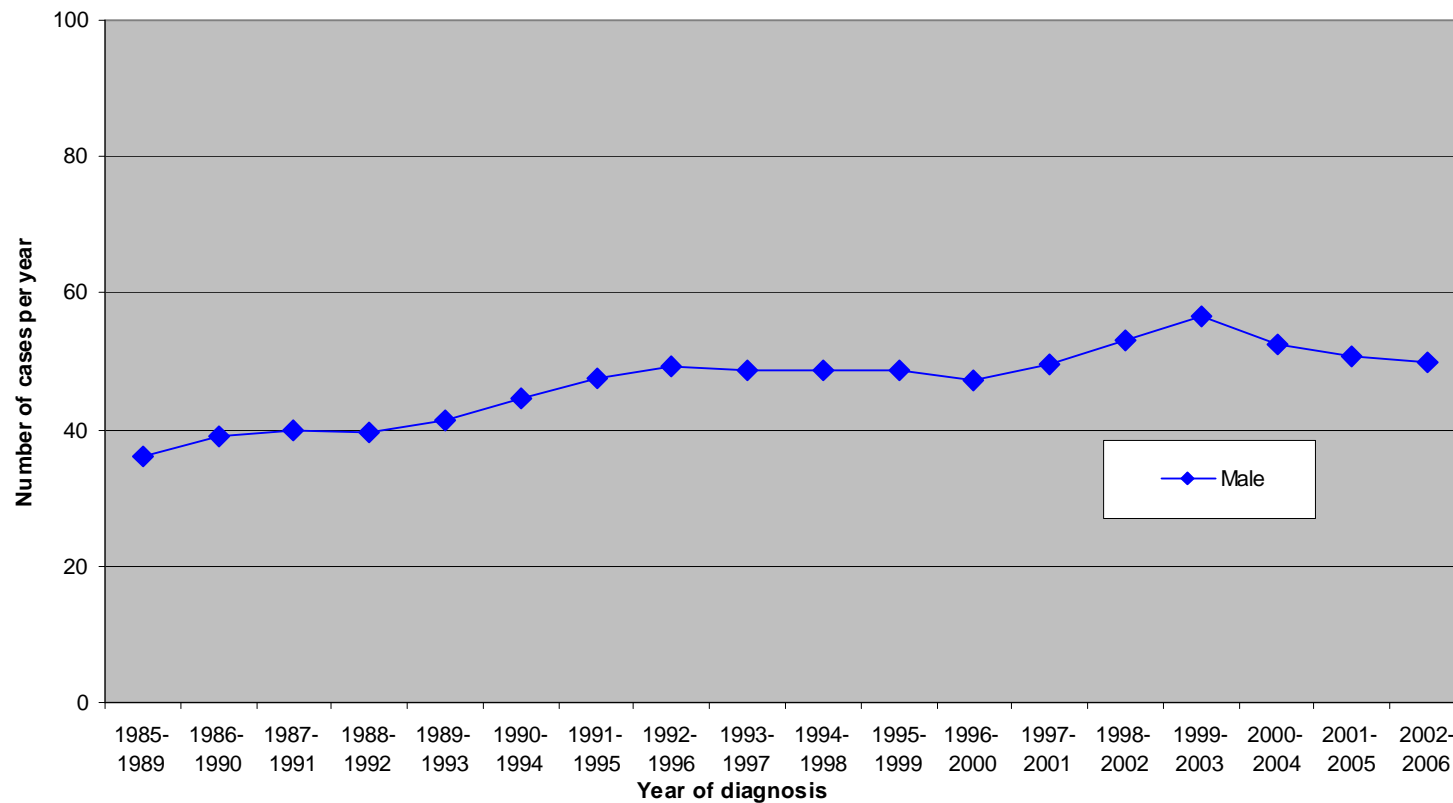
Mortality from Prostate Cancer (ICD10:C61) in Cambridgeshire PCT : Number of Cases



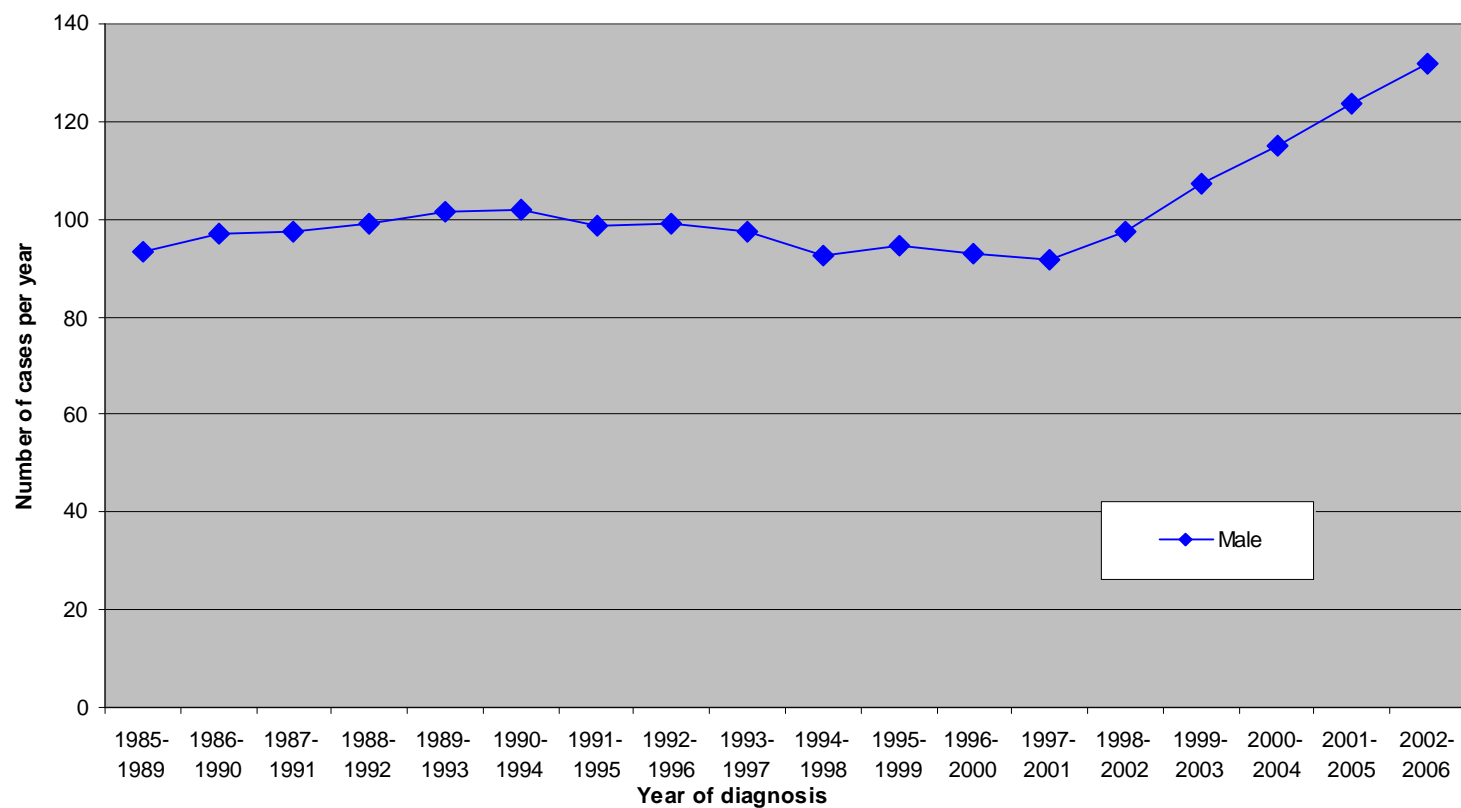
Mortality from Prostate Cancer (ICD10:C61) in Norfolk PCT : Number of Cases



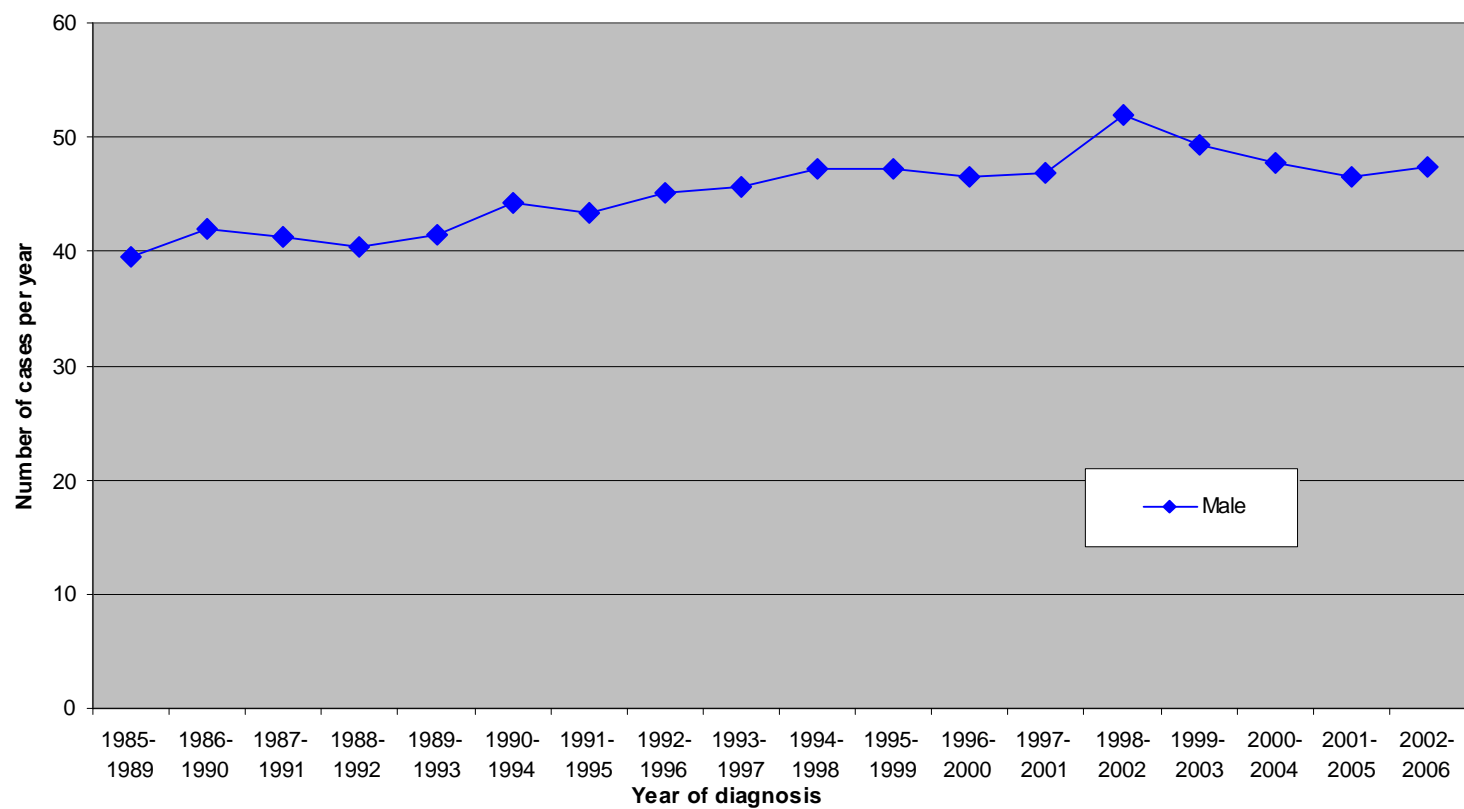
Mortality from Prostate Cancer (ICD10:C61) in Great Yarmouth and Waveney PCT : Number of Cases



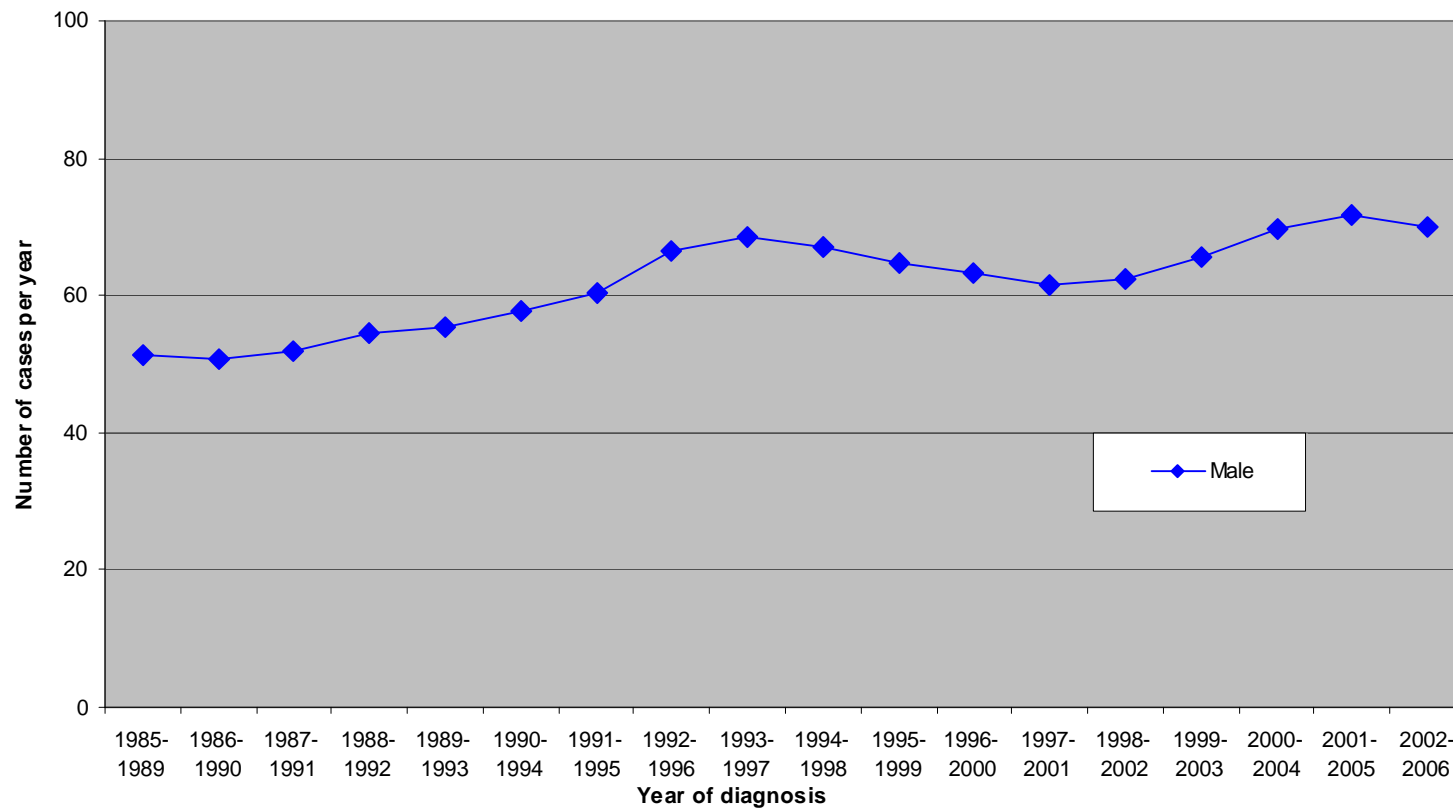
Mortality from Prostate Cancer (ICD10:C61) in Suffolk PCT : Number of Cases



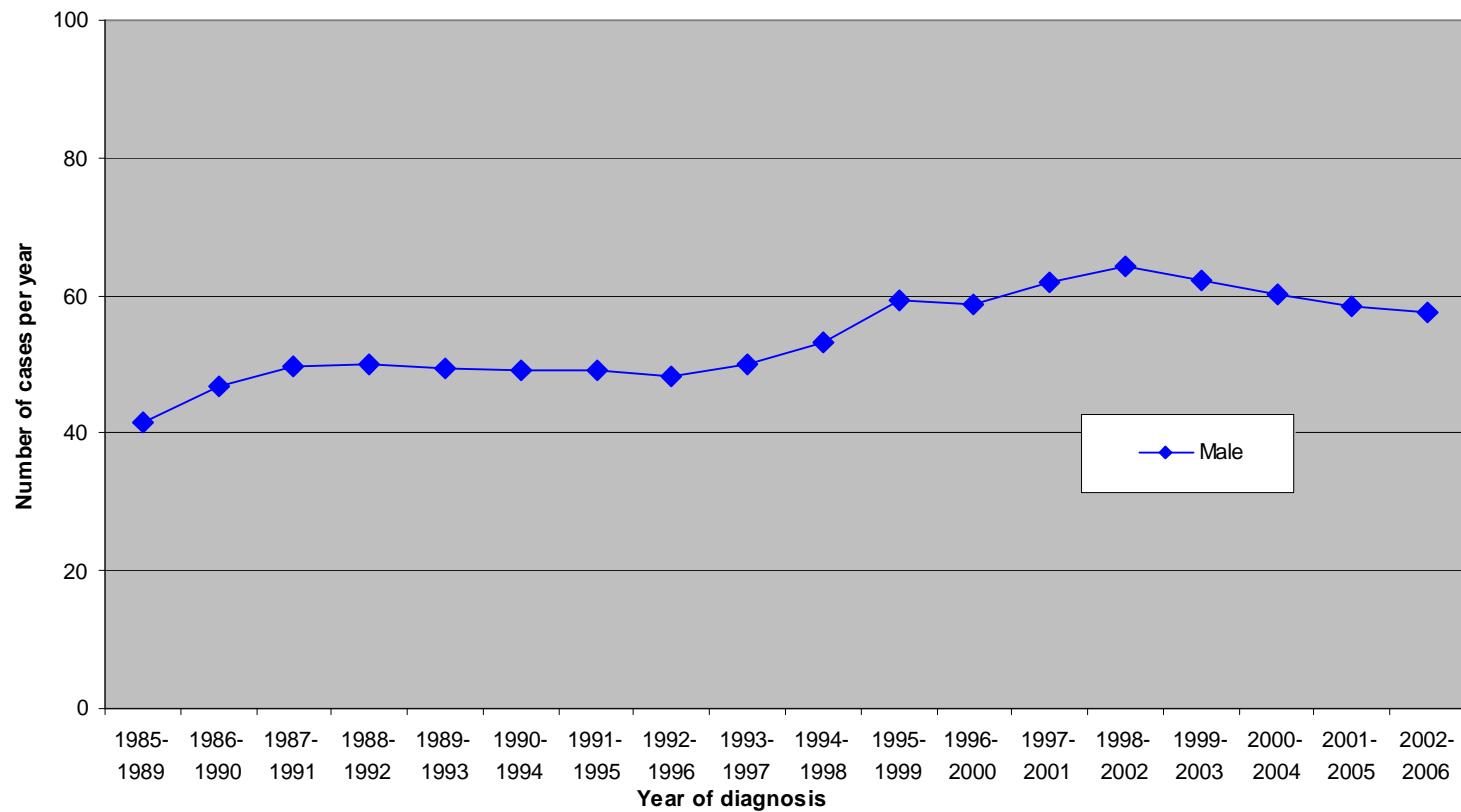
Mortality from Prostate Cancer (ICD10:C61) in West Essex PCT : Number of Cases



Mortality from Prostate Cancer (ICD10:C61) in North East Essex PCT : Number of Cases



Mortality from Prostate Cancer (ICD10:C61) in Mid Essex PCT : Number of Cases



Mortality from Prostate Cancer (ICD10:C61) in South West Essex PCT : Number of Cases

