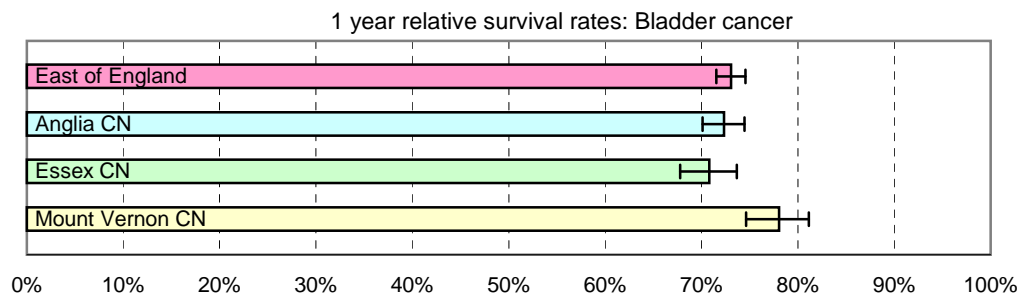


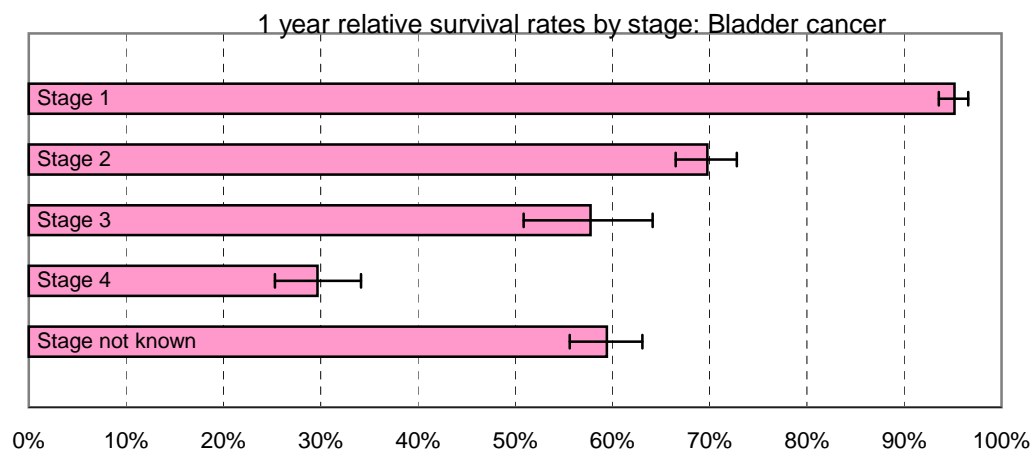
1 year relative survival rates - Bladder cancer: ICD-10 C67

East of England; Cancer Networks. Produced by Eastern Cancer Registration & Information Centre (ECRIC), 26 July 2010.



East of England - Cancer Networks	Relative survival rate	Lower Confidence Interval	Upper Confidence Interval	No. of cases (annual average 2004-2008)
East of England	73.07%	71.54%	74.55%	820
Anglia CN	72.34%	70.12%	74.45%	402
Essex CN	70.81%	67.77%	73.66%	220
Mount Vernon CN	78.05%	74.64%	81.15%	158

Figures for "East of England" include cases within the North London Cancer Network



East of England (by stage of tumour at diagnosis)	Relative survival rate	Lower Confidence Interval	Upper Confidence Interval	No. of cases (annual average 2004-2008)
Stage 1	95.17%	93.55%	96.58%	330
Stage 2	69.75%	66.51%	72.80%	198
Stage 3	57.76%	50.88%	64.14%	48
Stage 4	29.67%	25.32%	34.15%	88
Stage not known	59.42%	55.60%	63.07%	156

The no. of cases entering the survival analysis are for first tumours diagnosed in the 5 years 2004 to 2008, amongst persons resident in the areas specified.

Error bars indicate 95% confidence intervals