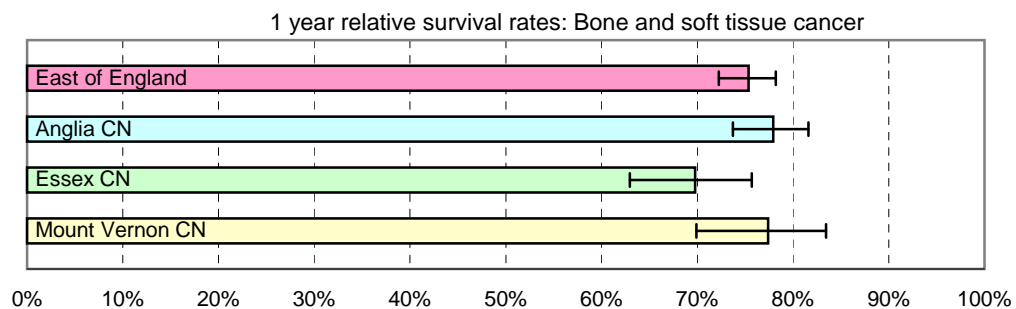


1 year relative survival rates - Bone and soft tissue cancer: ICD-10 C40, C41, C48, C49

East of England; Cancer Networks. Produced by Eastern Cancer Registration & Information Centre (ECRIC), 26 July 2010.



East of England - Cancer Networks	Relative survival rate	Lower Confidence Interval	Upper Confidence Interval	No. of cases (annual average 2004-2008)
East of England	75.35%	72.25%	78.19%	180
Anglia CN	77.93%	73.72%	81.61%	95
Essex CN	69.77%	62.97%	75.68%	44
Mount Vernon CN	77.41%	69.90%	83.44%	33

Figures for "East of England" include cases within the North London Cancer Network

The no. of cases entering the survival analysis are for first tumours diagnosed in the 5 years 2004 to 2008, amongst persons resident in the areas specified.

Error bars indicate 95% confidence intervals