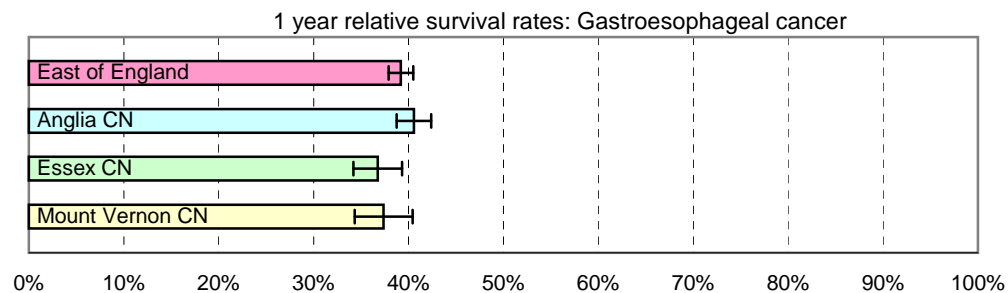


1 year relative survival rates - Gastroesophageal cancer: ICD-10 C15, C16

East of England; Cancer Networks. Produced by Eastern Cancer Registration & Information Centre (ECRIC), 26 July 2010.



East of England - Cancer Networks	Relative survival rate	Lower Confidence Interval	Upper Confidence Interval	No. of cases (annual average 2004-2008)
East of England	39.20%	37.90%	40.51%	1167
Anglia CN	40.57%	38.74%	42.40%	602
Essex CN	36.76%	34.21%	39.32%	298
Mount Vernon CN	37.37%	34.32%	40.43%	209

Figures for "East of England" include cases within the North London Cancer Network

The no. of cases entering the survival analysis are for first tumours diagnosed in the 5 years 2004 to 2008, amongst persons resident in the areas specified.

Error bars indicate 95% confidence intervals