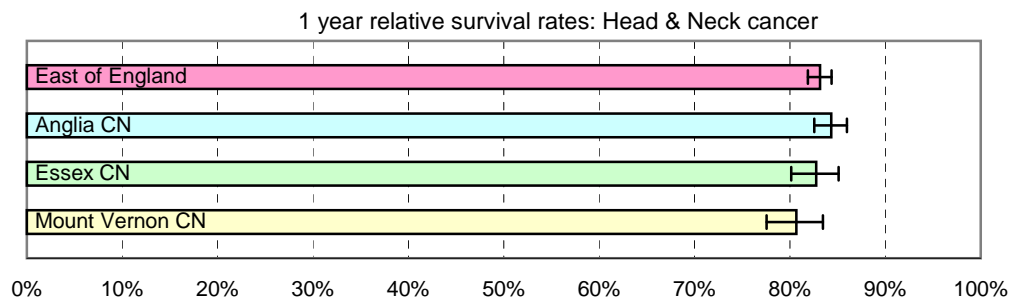


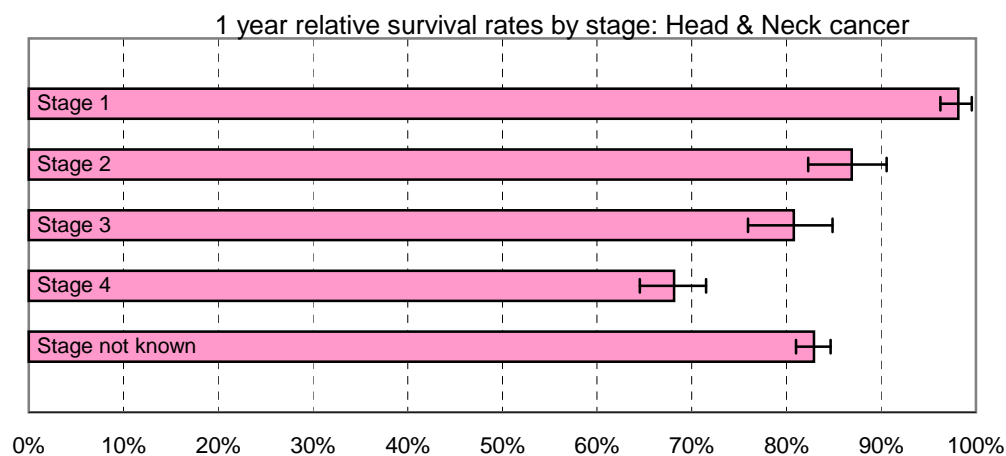
# 1 year relative survival rates - Head and Neck cancer (including thyroid): ICD-10 C00-C14, C30-C32, C73

East of England; Cancer Networks. Produced by Eastern Cancer Registration & Information Centre (ECRIC), 26 July 2010.



| East of England - Cancer Networks | Relative survival rate | Lower Confidence Interval | Upper Confidence Interval | No. of cases (annual average 2004-2008) |
|-----------------------------------|------------------------|---------------------------|---------------------------|---|
| East of England                   | 83.16%                 | 81.88%                    | 84.37%                    | 808                                     |
| Anglia CN                         | 84.33%                 | 82.55%                    | 85.97%                    | 414                                     |
| Essex CN                          | 82.75%                 | 80.15%                    | 85.10%                    | 209                                     |
| Mount Vernon CN                   | 80.68%                 | 77.56%                    | 83.46%                    | 155                                     |

Figures for "East of England" include cases within the North London Cancer Network



| East of England (by stage of tumour at diagnosis) | Relative survival rate | Lower Confidence Interval | Upper Confidence Interval | No. of cases (annual average 2004-2008) |
|---|------------------------|---------------------------|---------------------------|---|
| Stage 1   | 98.15%                 | 96.24%                    | 99.56%                    | 151                                     |
| Stage 2   | 86.89%                 | 82.29%                    | 90.57%                    | 65                                      |
| Stage 3   | 80.78%                 | 75.93%                    | 84.87%                    | 70                                      |
| Stage 4   | 68.14%                 | 64.52%                    | 71.51%                    | 146                                     |
| Stage not known                                   | 82.90%                 | 81.00%                    | 84.66%                    | 376                                     |

The no. of cases entering the survival analysis are for first tumours diagnosed in the 5 years 2004 to 2008, amongst persons resident in the areas specified.

Error bars indicate 95% confidence intervals