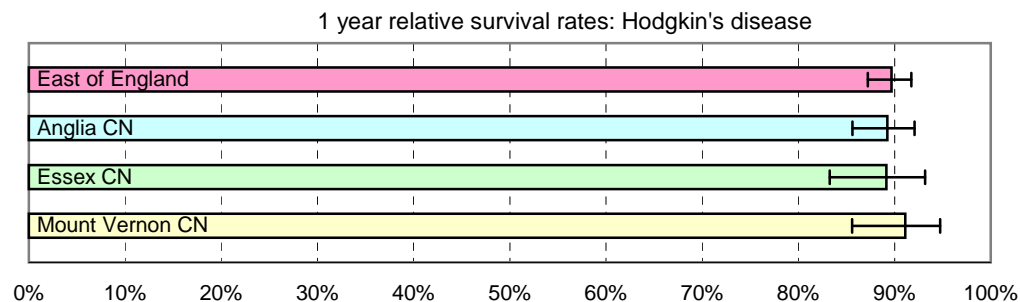


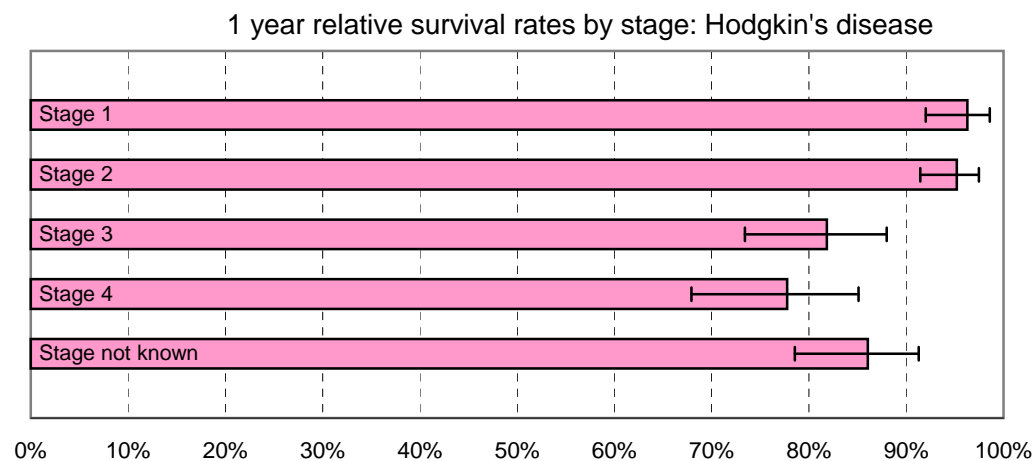
1 year relative survival rates - Hodgkin's disease: ICD-10 C81

East of England; Cancer Networks. Produced by Eastern Cancer Registration & Information Centre (ECRIC), 26 July 2010.



East of England - Cancer Networks	Relative survival rate	Lower Confidence Interval	Upper Confidence Interval	No. of cases (annual average 2004-2008)
East of England	89.69%	87.22%	91.75%	155
Anglia CN	89.24%	85.61%	92.08%	81
Essex CN	89.15%	83.25%	93.17%	34
Mount Vernon CN	91.13%	85.60%	94.74%	35

Figures for "East of England" include cases within the North London Cancer Network



East of England (by stage of tumour at diagnosis)	Relative survival rate	Lower Confidence Interval	Upper Confidence Interval	No. of cases (annual average 2004-2008)
Stage 1	96.28%	92.02%	98.57%	38
Stage 2	95.20%	91.45%	97.45%	48
Stage 3	81.85%	73.42%	87.98%	24
Stage 4	77.76%	67.91%	85.08%	20
Stage not known	86.05%	78.55%	91.27%	26

The no. of cases entering the survival analysis are for first tumours diagnosed in the 5 years 2004 to 2008, amongst persons resident in the areas specified.

Error bars indicate 95% confidence intervals