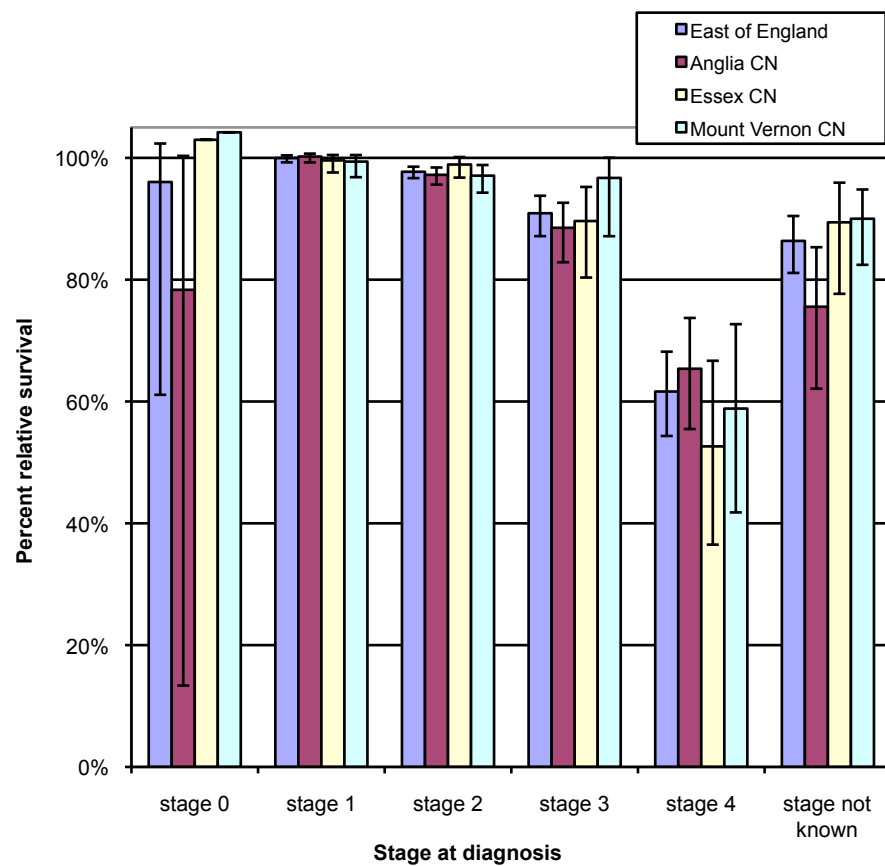


One year relative survival for Female breast cancer diagnosed in 2009 by area of residence in the East of England

Produced by Eastern Cancer Registration & Information Centre (ECRIC), 25 August 2011.



Stage	Area	No. of cases	Relative Survival Rate	Lower Confidence Interval	Upper Confidence Interval
stage 0	East of England	14	96.0%	61.1%	102.4%
	Anglia CN	4	78.3%	13.4%	100.3%
	Essex CN	4	103.0%	103.0%	103.0%
	Mount Vernon CN	3	104.2%	104.2%	104.2%
stage 1	East of England	1546	100.0%	99.3%	100.4%
	Anglia CN	839	100.2%	99.3%	100.7%
	Essex CN	370	99.6%	97.6%	100.5%
	Mount Vernon CN	272	99.4%	96.8%	100.5%
stage 2	East of England	1756	97.7%	96.7%	98.6%
	Anglia CN	901	97.2%	95.6%	98.4%
	Essex CN	423	98.9%	96.8%	100.1%
	Mount Vernon CN	355	97.1%	94.3%	98.8%
stage 3	East of England	369	90.9%	87.2%	93.8%
	Anglia CN	201	88.5%	82.9%	92.6%
	Essex CN	87	89.6%	80.4%	95.2%
	Mount Vernon CN	62	96.7%	87.1%	100.0%
stage 4	East of England	201	61.6%	54.3%	68.2%
	Anglia CN	111	65.4%	55.5%	73.7%
	Essex CN	43	52.6%	36.5%	66.7%
	Mount Vernon CN	40	58.8%	41.8%	72.7%
stage not known	East of England	255	86.4%	81.1%	90.5%
	Anglia CN	62	75.6%	62.1%	85.3%
	Essex CN	61	89.4%	77.7%	95.9%
	Mount Vernon CN	117	90.0%	82.4%	94.8%

* CN - Cancer Network.

