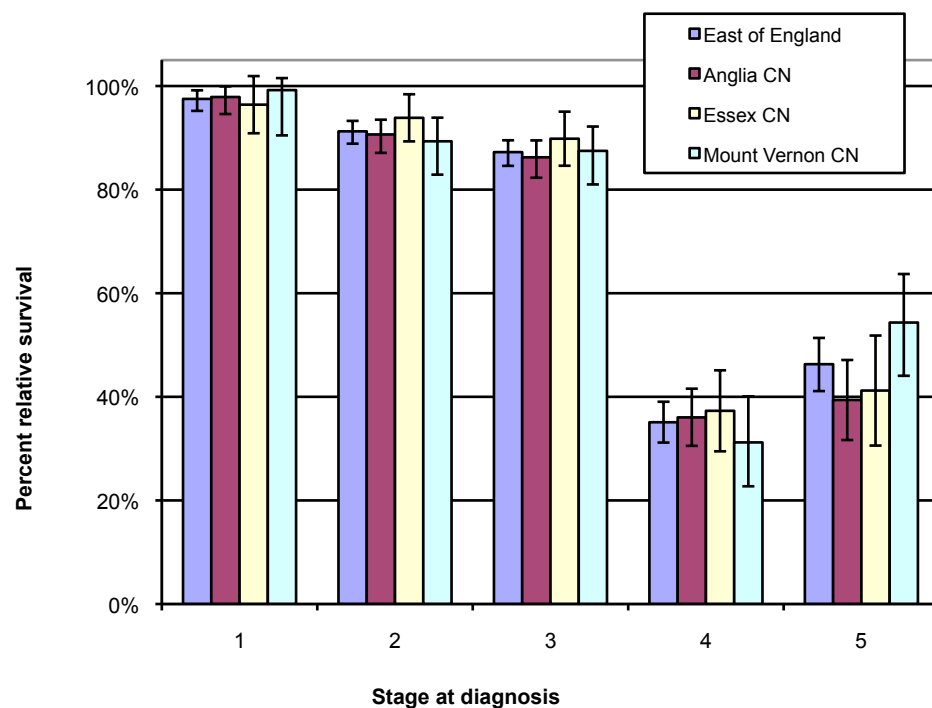


## One year relative survival for Colorectal cancer diagnosed in 2009 by area of residence in the East of England

Produced by Eastern Cancer Registration & Information Centre (ECRIC), 25 August 2011.



Stage	Area	No. of cases	Relative Survival Rate	Lower Confidence Interval	Upper Confidence Interval
stage 1	East of England	562	97.5%	95.2%	99.2%
	Anglia CN	297	97.9%	94.6%	99.9%
	Essex CN	156	96.4%	90.9%	99.6%
	Mount Vernon CN	66	99.2%	90.5%	101.5%
stage 2	East of England	913	91.3%	88.9%	93.3%
	Anglia CN	451	90.7%	87.1%	93.5%
	Essex CN	250	93.9%	89.3%	97.0%
	Mount Vernon CN	167	89.3%	82.9%	93.9%
stage 3	East of England	877	87.2%	84.6%	89.5%
	Anglia CN	437	86.2%	82.3%	89.5%
	Essex CN	228	89.8%	84.6%	93.6%
	Mount Vernon CN	172	87.5%	81.0%	92.2%
stage 4	East of England	594	35.1%	31.2%	39.1%
	Anglia CN	304	36.0%	30.5%	41.6%
	Essex CN	154	37.3%	29.5%	45.2%
	Mount Vernon CN	113	31.2%	22.7%	40.1%
stage not known	East of England	399	46.3%	41.1%	51.4%
	Anglia CN	167	39.4%	31.7%	47.1%
	Essex CN	90	41.2%	30.6%	51.7%
	Mount Vernon CN	108	54.3%	44.1%	63.7%

\* CN - Cancer Network.



			stage 01	stage 11	stage 21	stage 31	stage 41	stage not known1
				0.0231	0.0238	0.0265	0.0392	0.0519
				0.0329	0.0356	0.0395	0.0549	0.0773
				0.0552	0.0455	0.0522	0.0782	0.1062
				0.0874	0.0644	0.0648	0.0847	0.1028
				0.0231	0.0238	0.0265	0.0392	0.0519
				0.0329	0.0356	0.0395	0.0549	0.0773
				0.0552	0.0455	0.0522	0.0782	0.1062
				0.0874	0.0644	0.0648	0.0847	0.1028
				0.0231	0.0238	0.0265	0.0392	0.0519
				0.0329	0.0356	0.0395	0.0549	0.0773
				0.0552	0.0455	0.0522	0.0782	0.1062
				0.0874	0.0644	0.0648	0.0847	0.1028
				0.0231	0.0238	0.0265	0.0392	0.0519
				0.0329	0.0356	0.0395	0.0549	0.0773
				0.0552	0.0455	0.0522	0.0782	0.1062
				0.0874	0.0644	0.0648	0.0847	0.1028
				0.0231	0.0238	0.0265	0.0392	0.0519
				0.0329	0.0356	0.0395	0.0549	0.0773
				0.0552	0.0455	0.0522	0.0782	0.1062
				0.0874	0.0644	0.0648	0.0847	0.1028