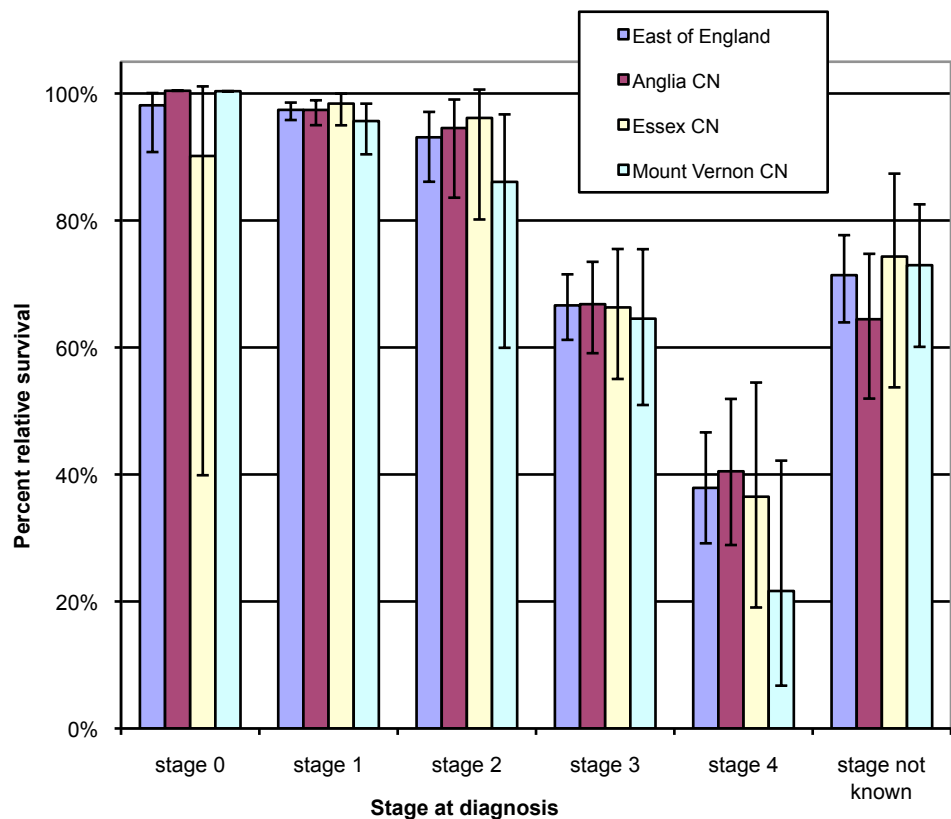


One year relative survival for Gynaecological cancer diagnosed in 2009 by area of residence in the East of England

Produced by Eastern Cancer Registration & Information Centre (ECRIC), 25 August 2011.



Stage	Area	No. of cases	Relative Survival Rate	Lower Confidence Interval	Upper Confidence Interval
stage 0	East of England	78	98.1%	90.8%	100.1%
	Anglia CN	61	100.4%	100.4%	100.4%
	Essex CN	8	90.2%	39.9%	101.1%
	Mount Vernon CN	8	100.4%	100.4%	100.4%
stage 1	East of England	818	97.4%	95.8%	98.6%
	Anglia CN	424	97.4%	95.0%	98.9%
	Essex CN	211	98.4%	95.0%	100.0%
	Mount Vernon CN	146	95.7%	90.4%	98.4%
stage 2	East of England	115	93.1%	86.1%	97.1%
	Anglia CN	56	94.6%	83.6%	99.1%
	Essex CN	34	96.2%	80.2%	100.6%
	Mount Vernon CN	19	86.1%	60.0%	96.7%
stage 3	East of England	340	66.6%	61.2%	71.5%
	Anglia CN	174	66.8%	59.1%	73.5%
	Essex CN	86	66.3%	55.0%	75.5%
	Mount Vernon CN	62	64.5%	50.9%	75.5%
stage 4	East of England	122	37.9%	29.2%	46.6%
	Anglia CN	71	40.5%	28.9%	51.9%
	Essex CN	28	36.5%	19.1%	54.5%
	Mount Vernon CN	19	21.7%	6.7%	42.2%
stage not known	East of England	183	71.4%	64.0%	77.7%
	Anglia CN	74	64.5%	52.0%	74.8%
	Essex CN	29	74.3%	53.7%	87.4%
	Mount Vernon CN	66	73.0%	60.1%	82.5%

* CN - Cancer Network.

