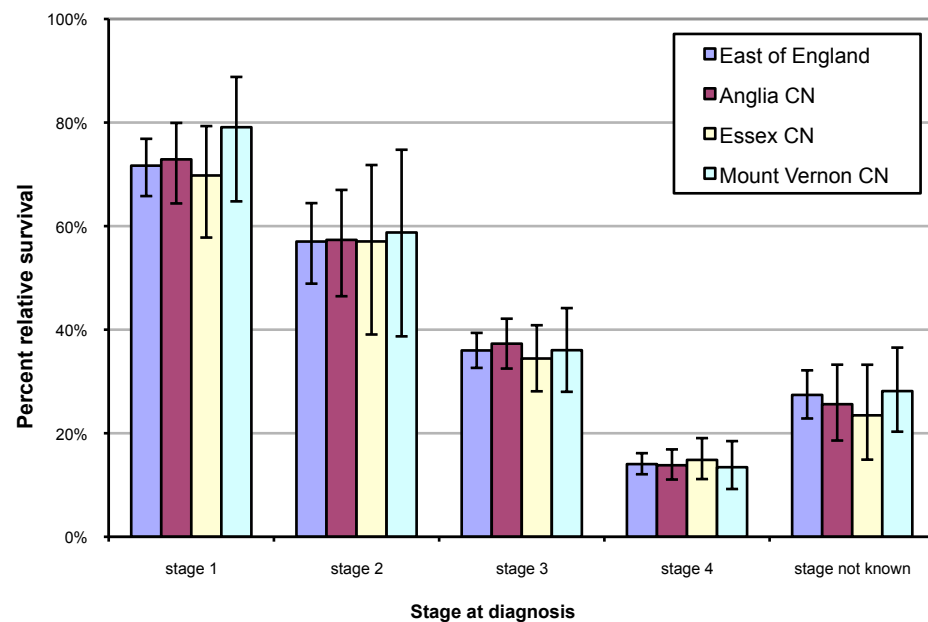


## One year relative survival for trachea, bronchus and lung cancer diagnosed in 2009 by area of residence in the East of England.

Produced by Eastern Cancer Registration & Information Centre (ECRIC), 25 August 2011.



Stage	Area	No. of cases	Relative Survival Rate	Lower Confidence Interval	Upper Confidence Interval
stage 1	East of England	294	71.7%	65.8%	76.9%
	Anglia CN*	146	72.9%	64.4%	79.9%
	Essex CN	79	69.8%	57.8%	79.3%
	Mount Vernon CN	54	79.1%	64.8%	88.8%
stage 2	East of England	167	57.0%	48.9%	64.4%
	Anglia CN	96	57.3%	46.5%	67.0%
	Essex CN	36	57.0%	39.1%	71.8%
	Mount Vernon CN	30	58.8%	38.7%	74.8%
stage 3	East of England	819	36.0%	32.6%	39.4%
	Anglia CN	409	37.3%	32.5%	42.1%
	Essex CN	223	34.4%	28.1%	40.9%
	Mount Vernon CN	141	36.0%	28.0%	44.2%
stage 4	East of England	1162	14.0%	12.1%	16.2%
	Anglia CN	559	13.8%	11.1%	16.9%
	Essex CN	320	14.9%	11.2%	19.1%
	Mount Vernon CN	216	13.4%	9.2%	18.5%
stage not known	East of England	374	27.4%	22.9%	32.2%
	Anglia CN	143	25.6%	18.6%	33.2%
	Essex CN	85	23.5%	14.9%	33.2%
	Mount Vernon CN	122	28.1%	20.3%	36.5%

\* CN - Cancer Network.