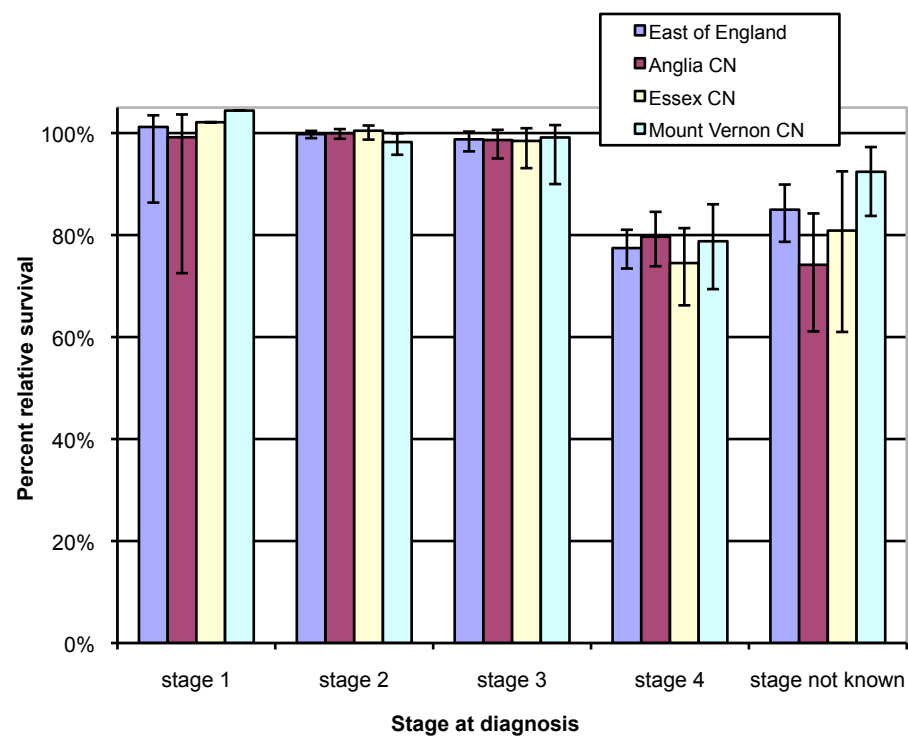


One year relative survival for Prostate cancer diagnosed in 2009 by area of residence in the East of England

Produced by Eastern Cancer Registration & Information Centre (ECRIC), 25 August 2011.



Stage	Area	No. of cases	Relative Survival Rate	Lower Confidence Interval	Upper Confidence Interval
stage 1	East of England	39	101.2%	86.4%	103.5%
	Anglia CN	20	99.2%	72.5%	103.7%
	Essex CN	12	102.1%	102.1%	102.1%
	Mount Vernon CN	3	104.4%	104.4%	104.4%
stage 2	East of England	2714	99.8%	99.0%	100.4%
	Anglia CN	1557	100.0%	98.9%	100.8%
	Essex CN	545	100.5%	98.7%	101.5%
	Mount Vernon CN	463	98.2%	95.7%	99.9%
stage 3	East of England	446	98.8%	96.4%	100.3%
	Anglia CN	235	98.6%	95.0%	100.6%
	Essex CN	135	98.5%	93.1%	101.0%
	Mount Vernon CN	63	99.1%	90.0%	101.6%
stage 4	East of England	573	77.5%	73.4%	81.0%
	Anglia CN	276	79.7%	73.9%	84.6%
	Essex CN	154	74.5%	66.2%	81.4%
	Mount Vernon CN	116	78.8%	69.4%	86.0%
stage not known	East of England	207	85.0%	78.7%	89.9%
	Anglia CN	71	74.2%	61.1%	84.2%
	Essex CN	31	80.9%	61.0%	92.5%
	Mount Vernon CN	89	92.4%	83.8%	97.3%

* CN - Cancer Network.

