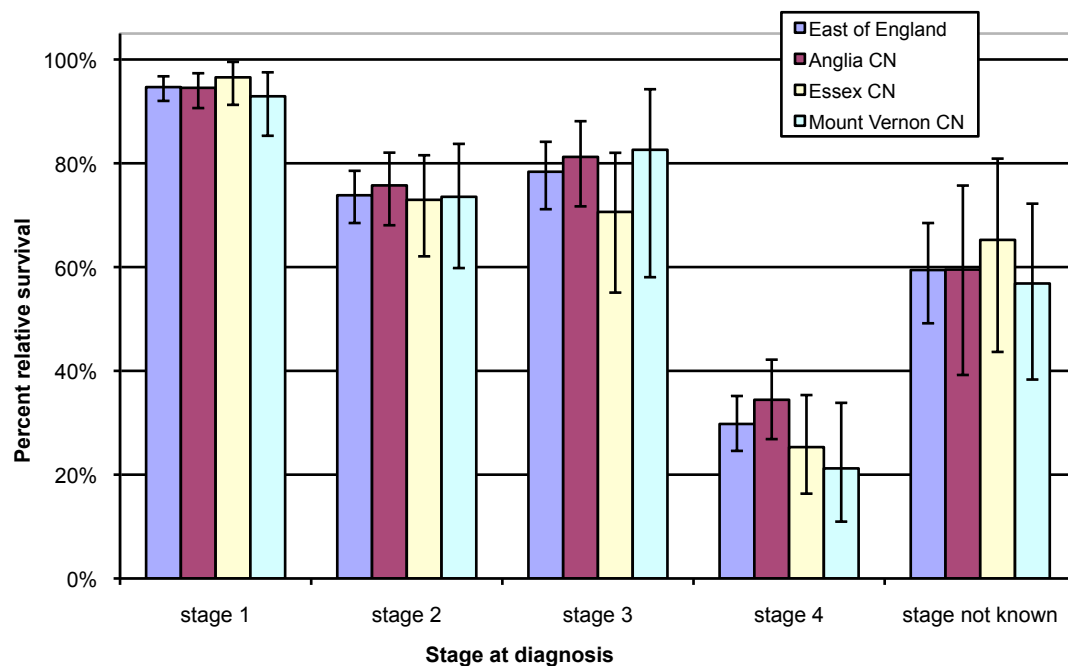


## One year relative survival for Urological (excluding male genital) cancer diagnosed in 2009 by area of residence in the East of England

Produced by Eastern Cancer Registration & Information Centre (ECRIC), 25 August 2011.



| Stage           | Area            | No. of cases | Relative survival rate | Lower Confidence Interval | Upper Confidence Interval |
|-----------------|-----------------|--------------|------------------------|---------------------------|---------------------------|
| Stage 1         | East of England | 603          | 94.7%                  | 92.0%                     | 96.8%                     |
|                 | Anglia CN       | 317          | 94.5%                  | 90.6%                     | 97.4%                     |
|                 | Essex CN        | 157          | 96.6%                  | 91.3%                     | 99.5%                     |
|                 | Mount Vernon CN | 113          | 92.9%                  | 85.3%                     | 97.5%                     |
| Stage 2         | East of England | 340          | 73.8%                  | 68.5%                     | 78.6%                     |
|                 | Anglia CN       | 169          | 75.7%                  | 68.1%                     | 82.1%                     |
|                 | Essex CN        | 93           | 73.0%                  | 62.1%                     | 81.6%                     |
|                 | Mount Vernon CN | 61           | 73.5%                  | 59.8%                     | 83.7%                     |
| Stage 3         | East of England | 174          | 78.4%                  | 71.2%                     | 84.1%                     |
|                 | Anglia CN       | 101          | 81.2%                  | 71.7%                     | 88.1%                     |
|                 | Essex CN        | 48           | 70.6%                  | 55.1%                     | 82.0%                     |
|                 | Mount Vernon CN | 21           | 82.6%                  | 58.1%                     | 94.3%                     |
| Stage 4         | East of England | 299          | 29.8%                  | 24.6%                     | 35.2%                     |
|                 | Anglia CN       | 153          | 34.4%                  | 26.9%                     | 42.2%                     |
|                 | Essex CN        | 82           | 25.3%                  | 16.3%                     | 35.3%                     |
|                 | Mount Vernon CN | 49           | 21.2%                  | 11.0%                     | 33.8%                     |
| Stage not known | East of England | 109          | 59.4%                  | 49.2%                     | 68.5%                     |
|                 | Anglia CN       | 30           | 59.5%                  | 39.2%                     | 75.7%                     |
|                 | Essex CN        | 27           | 65.2%                  | 43.7%                     | 80.9%                     |
|                 | Mount Vernon CN | 35           | 56.8%                  | 38.3%                     | 72.2%                     |

\* CN - Cancer Network.



