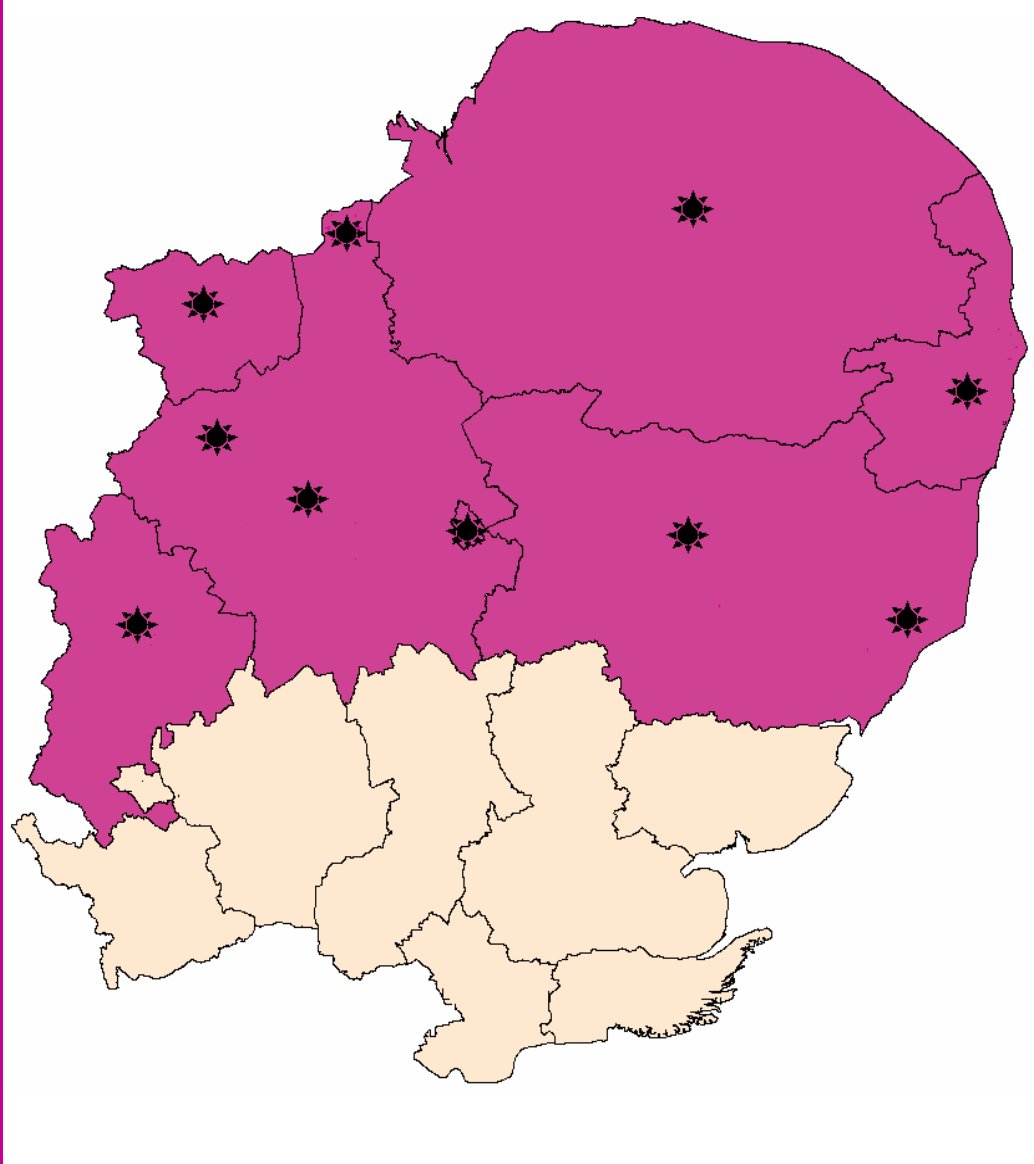


**Head and Neck Cancers diagnosed and treated at hospitals in
the new Anglia Cancer Network in 2004 and 2005**

ecric

Fighting cancer with information



**Eastern Cancer Registration &
Information Centre**

General Information

The report is based upon the Eastern Cancer Registry and Intelligence Centre (ECRIC) registered data for patients diagnosed in 2001-2005 and for patients receiving initial treatments at, or from, these hospitals during 2004 or 2005. ECRIC records details of all registrable neoplasms and the first six months of treatments for these neoplasms for patients resident in the East of England Government Office Region (by post code) at the date of diagnosis. Data on registration of patients resident in Essex and Hertfordshire before 2005 and in Bedfordshire before 1996 were originally collected by the Thames Cancer Registry.

The registry collects cancer data by calendar year.

Neoplasm Groupings for this report

In this report neoplasms are grouped as follows:

ICD 10 codes

C00-C14, C30-C32 & C73

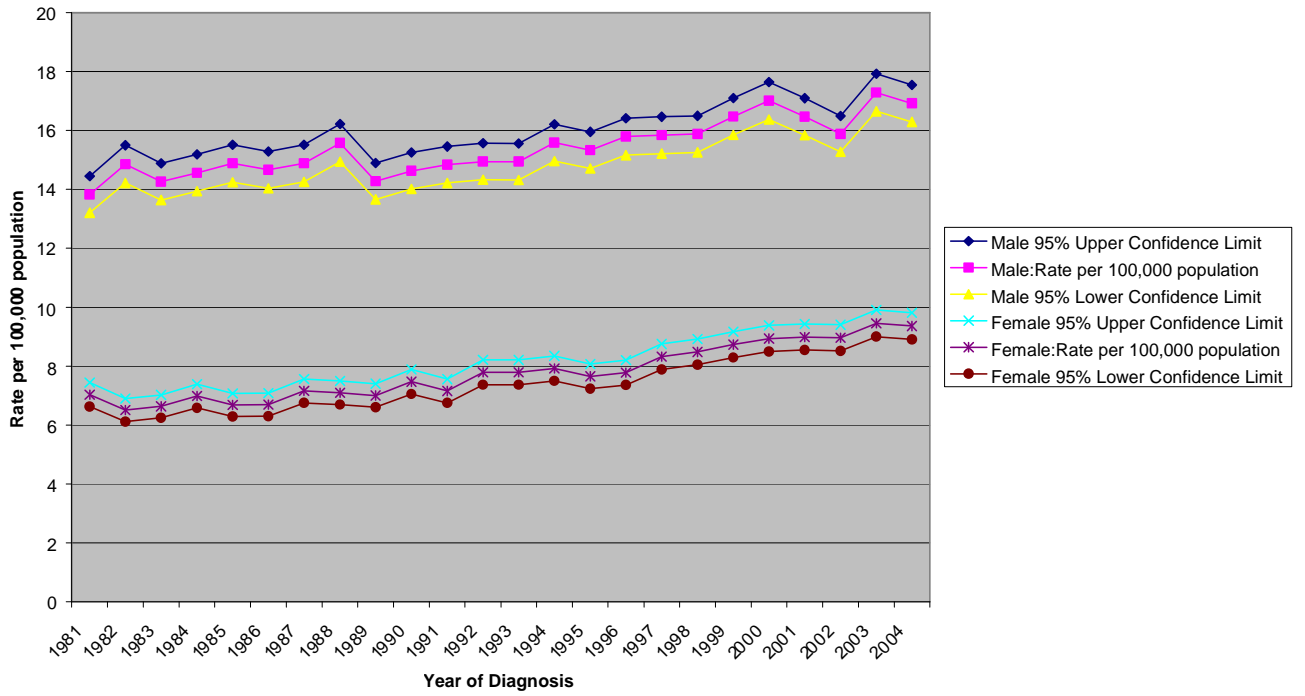
ICD 10 sites

Invasive Head and Neck neoplasms (Including Thyroid)

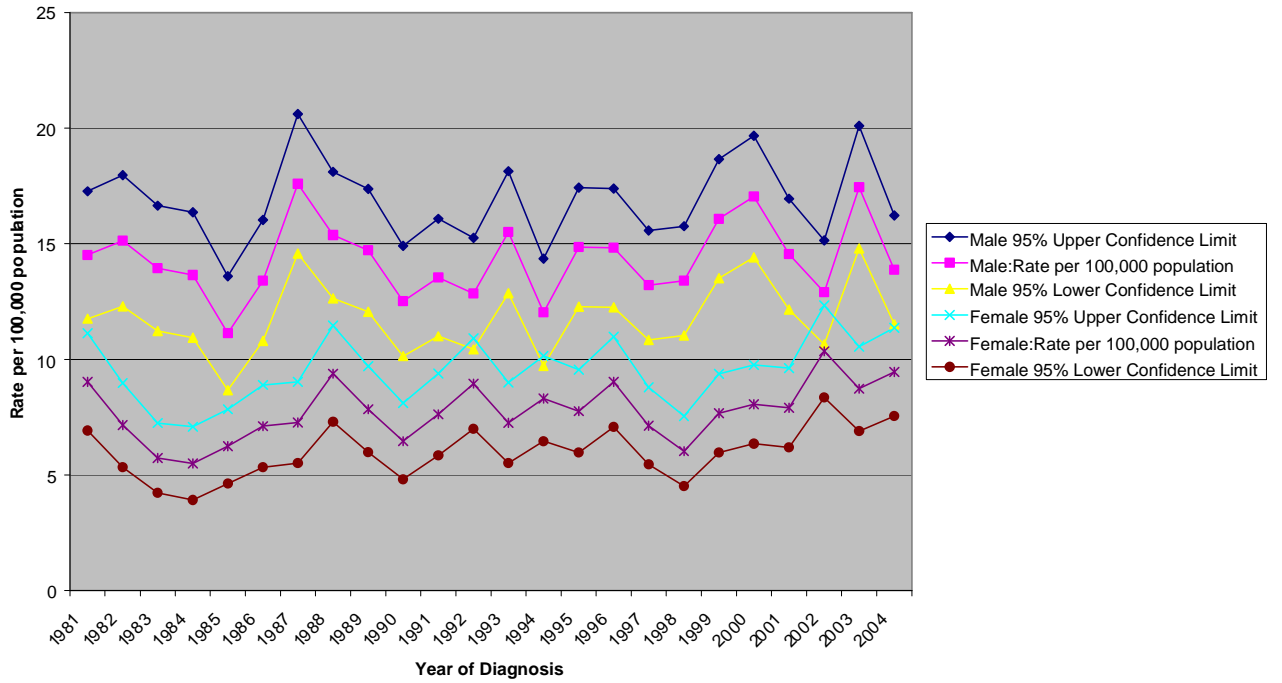
Diagnoses and Treatments at Other Hospitals

These are included in the numbers for Diagnosed at Hospital, Treated Elsewhere and Diagnosed Elsewhere, Treated at Hospital in the tables in this report.

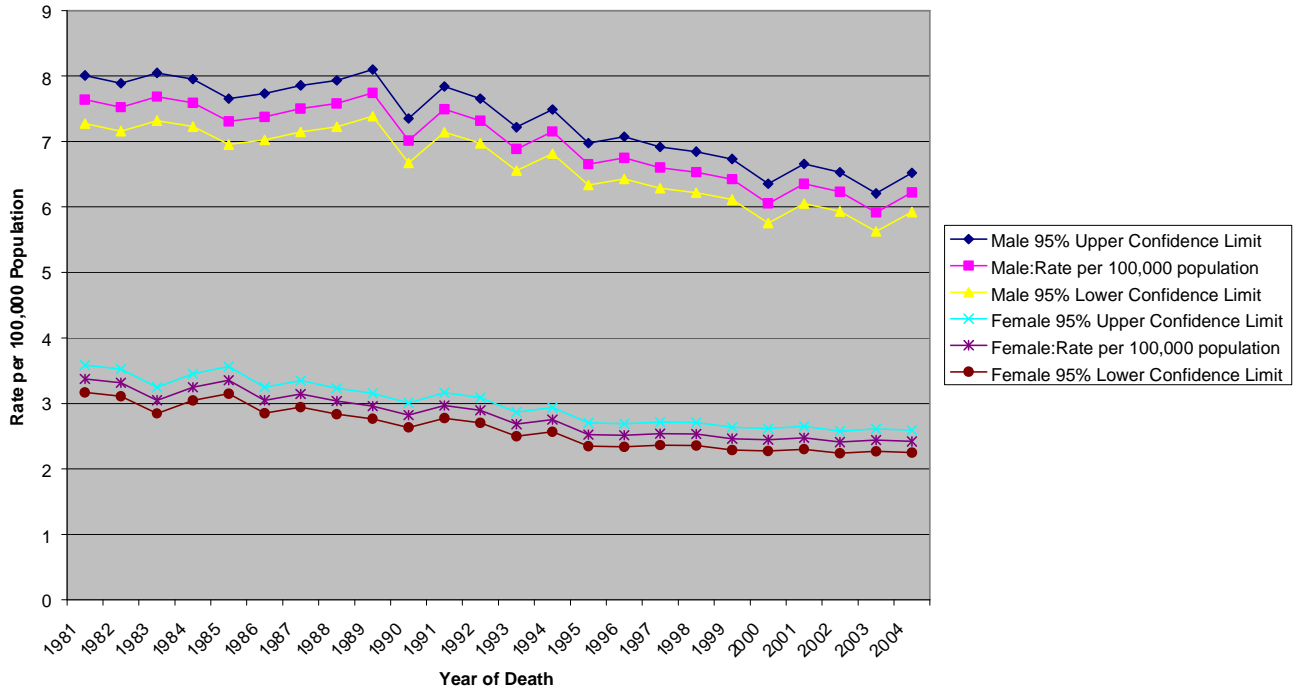
European Age Standardised Incidence Rate for Head & Neck (inc. Thyroid) Cancers in England



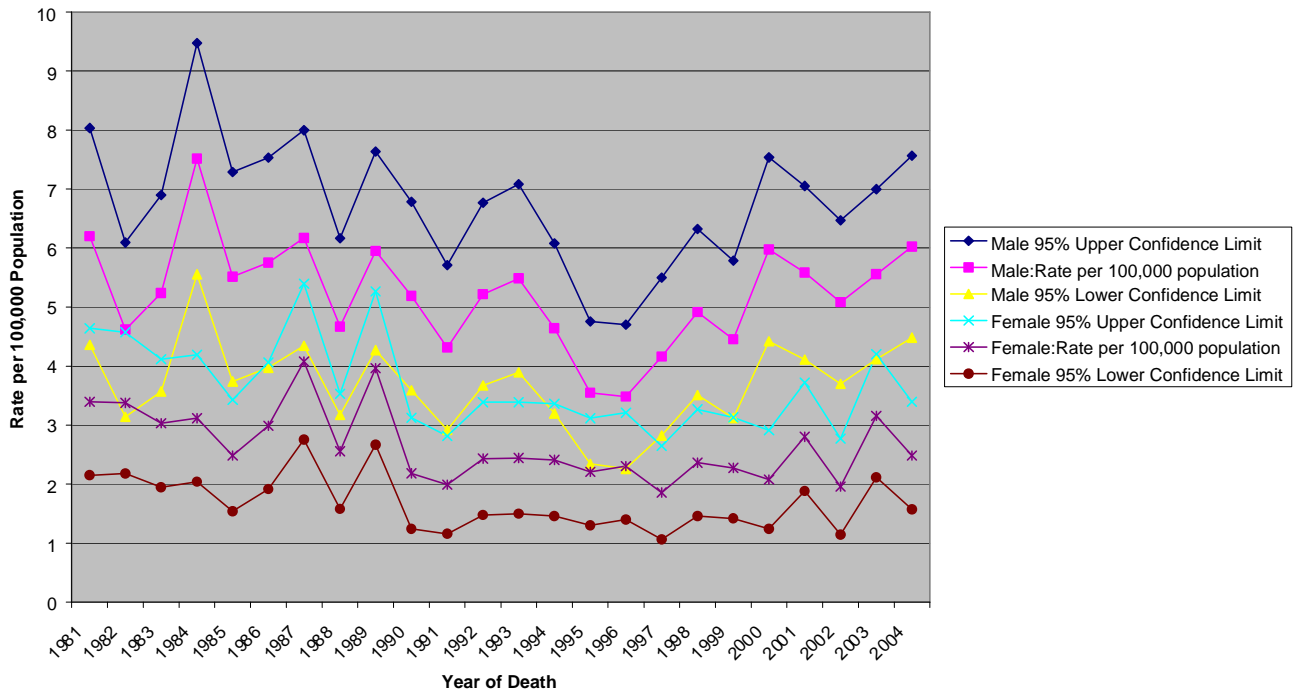
European Age Standardised Incidence Rate for Head & Neck (inc. Thyroid) Cancers in WACN



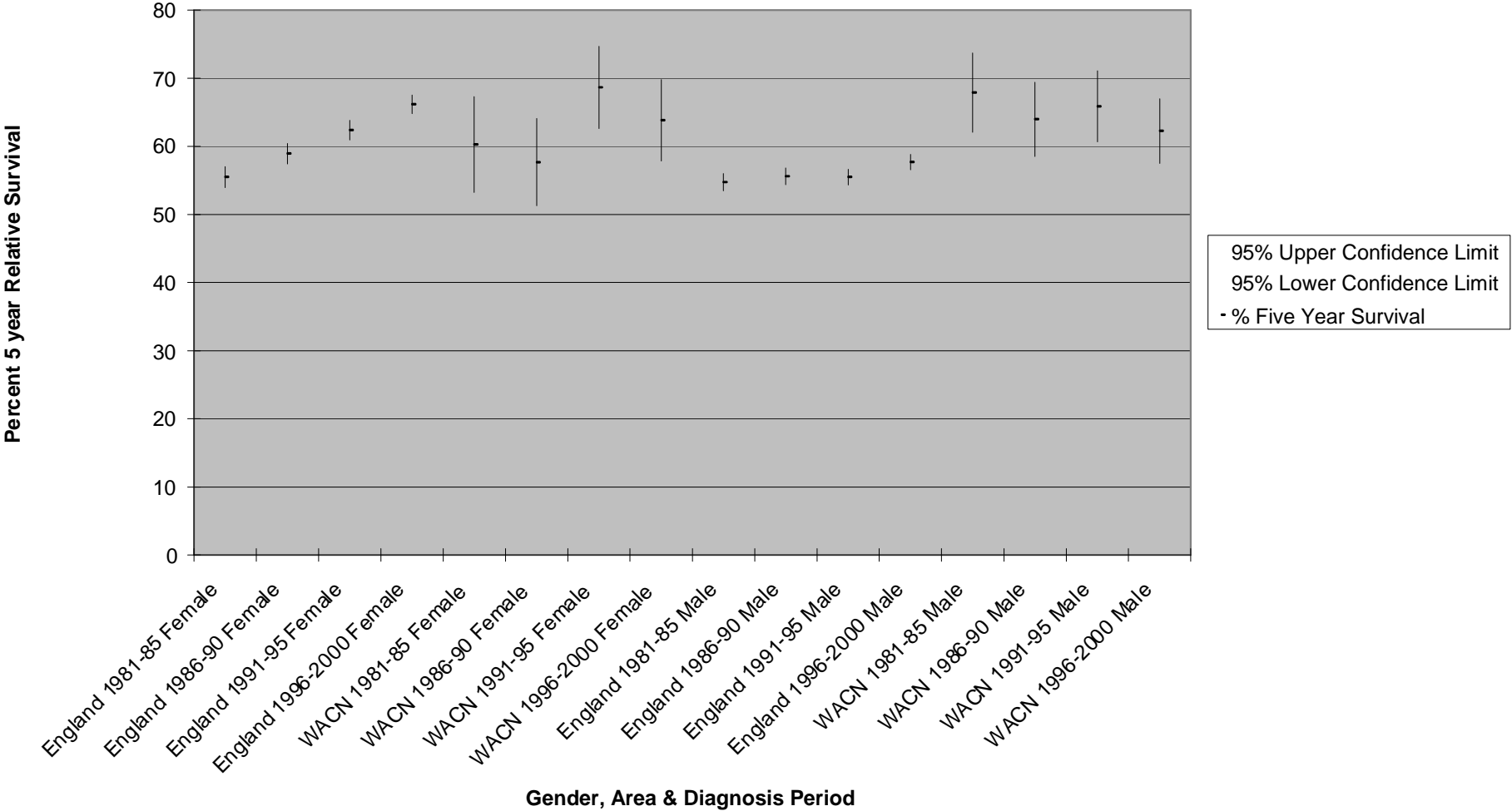
European Age Standardised Mortality Rate for Head & Neck (inc. Thyroid) Cancers in England



European Age Standardised Mortality Rate for Head & Neck (inc. Thyroid) Cancers in WACN



Head & Neck (inc Thyroid) Cancer - Five Year Relative Survival by Diagnosis Cohort



Head & Neck Cancer cases registered by ECRIC in 2000-2005

N.B.: Registration data for 2005 is incomplete as of 8 January 2007

Hospital of diagnosis	Histologically Confirmed	No Treatment	Year of Diagnosis					
			2000	2001	2002	2003	2004	2005
Addenbrooke's	no	No Treatment	1	4	1			
Addenbrooke's	no	Treated (any hospital)	3					
Addenbrooke's	yes	No Treatment	10	4	2	2	6	3
Addenbrooke's	yes	Treated (any hospital)	65	63	63	60	65	53
Addenbrooke's	Total	Total	79	71	66	62	71	56
Bedford	yes	No Treatment	2	2	1	4		2
Bedford	yes	Treated (any hospital)	28	27	27	24	22	18
Bedford	Total	Total	30	29	28	28	22	20
Hinchingbrooke	no	No Treatment	1					
Hinchingbrooke	yes	No Treatment					2	
Hinchingbrooke	yes	Treated (any hospital)	1	2	3	8	4	7
Hinchingbrooke	Total	Total	2	2	3	8	6	7
Ipswich	no	No Treatment			1			
Ipswich	not known	No Treatment				1		
Ipswich	not known	Treated (any hospital)		1				
Ipswich	yes	No Treatment	4	6	4	5	6	3
Ipswich	yes	Treated (any hospital)	41	35	34	60	48	33
Ipswich	Total	Total	45	42	39	66	54	36
James Paget	no	No Treatment	1	1	1	1		
James Paget	no	Treated (any hospital)	1	1			1	
James Paget	yes	No Treatment		1	1	2		3
James Paget	yes	Treated (any hospital)	25	27	23	36	30	27
James Paget	Total	Total	27	30	25	39	31	30
QEH King's Lynn	no	No Treatment	1			1		
QEH King's Lynn	no	Treated (any hospital)	1					
QEH King's Lynn	yes	No Treatment		1	1	4	2	3
QEH King's Lynn	yes	Treated (any hospital)	32	31	23	26	12	16
QEH King's Lynn	Total	Total	34	32	24	31	14	19
Norfolk & Norwich	no	No Treatment			1			
Norfolk & Norwich	yes	No Treatment		2	3	7	7	10
Norfolk & Norwich	yes	Treated (any hospital)	43	53	78	65	101	83
Norfolk & Norwich	Total	Total	43	55	82	72	108	93
Papworth	yes	No Treatment						2
Papworth	yes	Treated (any hospital)			1		1	
Papworth	Total	Total	0	0	1	0	1	2
Peterborough	no	No Treatment	1				2	
Peterborough	no	Treated (any hospital)	1		1			
Peterborough	yes	No Treatment	2	2	5		4	1
Peterborough	yes	Treated (any hospital)	42	40	38	41	28	30
Peterborough	Total	Total	46	42	44	41	34	31
West Suffolk	yes	No Treatment	2	2	6	2	2	1
West Suffolk	yes	Treated (any hospital)	20	16	20	23	34	18
West Suffolk	Total	Total	22	18	26	25	36	19

Number of Head & Neck Cancer cases treated at hospitals in the new Anglia Cancer Network

Year of Diagnosis	Hospital	Head & Neck cancer cases	Single Patient count of cases having Surgery	Single Patient count of cases having Radiotherapy	Single Patient count of cases having Chemotherapy	Single Patient count of cases having Other treatments	Single Patient count across all treatments at this hospital
2004	Addenbrookes	Diagnosed at Hospital, treated at Hospital	49	45	6	2	65
2004	Addenbrookes	Diagnosed at Hospital, treated elsewhere	1	0	0	0	N/A
2004	Addenbrookes	Diagnosed elsewhere, treated at Hospital	10	69	6	0	71
2004	Addenbrookes	Total					136
2004	Bedford	Diagnosed at Hospital, treated at Hospital	12	0	6	1	16
2004	Bedford	Diagnosed at Hospital, treated elsewhere	4	17	0	0	N/A
2004	Bedford	Diagnosed elsewhere, treated at Hospital	0	0	1	0	1
2004	Bedford	Total					17
2004	Hinchingbrooke	Diagnosed at Hospital, treated at Hospital	2	0	0	0	2
2004	Hinchingbrooke	Diagnosed at Hospital, treated elsewhere	2	3	0	0	N/A
2004	Hinchingbrooke	Diagnosed elsewhere, treated at Hospital	0	0	0	0	0
2004	Hinchingbrooke	Total					2
2004	Ipswich	Diagnosed at Hospital, treated at Hospital	44	32	4	0	48
2004	Ipswich	Diagnosed at Hospital, treated elsewhere	0	0	0	0	N/A
2004	Ipswich	Diagnosed elsewhere, treated at Hospital	9	16	0	0	18
2004	Ipswich	Total					66
2004	James Paget	Diagnosed at Hospital, treated at Hospital	13	0	3	0	16
2004	James Paget	Diagnosed at Hospital, treated elsewhere	8	22	8	0	N/A
2004	James Paget	Diagnosed elsewhere, treated at Hospital	0	0	0	0	0
2004	James Paget	Total					16
2004	Norfolk & Norwich	Diagnosed at Hospital, treated at Hospital	75	57	23	1	99
2004	Norfolk & Norwich	Diagnosed at Hospital, treated elsewhere	1	1	1	0	N/A
2004	Norfolk & Norwich	Diagnosed elsewhere, treated at Hospital	12	29	11	0	35
2004	Norfolk & Norwich	Total					134
2004	Papworth	Diagnosed at Hospital, treated at Hospital	1	0	0	0	1
2004	Papworth	Diagnosed at Hospital, treated elsewhere	0	1	0	0	N/A
2004	Papworth	Diagnosed elsewhere, treated at Hospital	0	0	0	0	0
2004	Papworth	Total					1
2004	Peterborough	Diagnosed at Hospital, treated at Hospital	21	0	0	0	21
2004	Peterborough	Diagnosed at Hospital, treated elsewhere	0	17	3	0	N/A
2004	Peterborough	Diagnosed elsewhere, treated at Hospital	0	0	0	0	0
2004	Peterborough	Total					21
2004	QEH Kings Lynn	Diagnosed at Hospital, treated at Hospital	6	0	1	0	7
2004	QEH Kings Lynn	Diagnosed at Hospital, treated elsewhere	5	5	3	0	N/A
2004	QEH Kings Lynn	Diagnosed elsewhere, treated at Hospital	0	0	0	0	0
2004	QEH Kings Lynn	Total					7
2004	West Suffolk	Diagnosed at Hospital, treated at Hospital	14	0	0	0	14
2004	West Suffolk	Diagnosed at Hospital, treated elsewhere	10	25	1	0	N/A
2004	West Suffolk	Diagnosed elsewhere, treated at Hospital	0	0	0	0	0
2004	West Suffolk	Total					14

Number of Head & Neck Cancer cases treated at hospitals in the new Anglia Cancer Network

N.B.: Registration data for 2005 is incomplete as of 8 January 2007

Year	Hospital	Head & Neck cancer cases	Single Patient count of cases having Surgery	Single Patient count of cases having Radio-therapy	Single Patient count of cases having Chemo-therapy	Single Patient count of cases having Other treatments	Single Patient count across all treatments at this hospital
2005	Addenbrookes	Diagnosed at Hospital, treated at Hospital	41	42	7	0	53
2005	Addenbrookes	Diagnosed at Hospital, treated elsewhere	0	0	0	0	N/A
2005	Addenbrookes	Diagnosed elsewhere, treated at Hospital	17	65	15	0	69
2005	Addenbrookes	Total					122
2005	Bedford	Diagnosed at Hospital, treated at Hospital	7	0	0	0	7
2005	Bedford	Diagnosed at Hospital, treated elsewhere	5	13	3	0	N/A
2005	Bedford	Diagnosed elsewhere, treated at Hospital	0	0	0	0	0
2005	Bedford	Total					7
2005	Hinchingbrooke	Diagnosed at Hospital, treated at Hospital	2	0	0	0	2
2005	Hinchingbrooke	Diagnosed at Hospital, treated elsewhere	4	6	2	0	N/A
2005	Hinchingbrooke	Diagnosed elsewhere, treated at Hospital	0	0	0	0	0
2005	Hinchingbrooke	Total					2
2005	Ipswich	Diagnosed at Hospital, treated at Hospital	26	25	3	0	32
2005	Ipswich	Diagnosed at Hospital, treated elsewhere	1	0	0	0	N/A
2005	Ipswich	Diagnosed elsewhere, treated at Hospital	3	7	0	0	8
2005	Ipswich	Total					40
2005	James Paget	Diagnosed at Hospital, treated at Hospital	9	0	7	0	15
2005	James Paget	Diagnosed at Hospital, treated elsewhere	6	20	2	0	N/A
2005	James Paget	Diagnosed elsewhere, treated at Hospital	0	0	0	0	0
2005	James Paget	Total					15
2005	Norfolk & Norwich	Diagnosed at Hospital, treated at Hospital	57	53	19	0	83
2005	Norfolk & Norwich	Diagnosed at Hospital, treated elsewhere	0	0	0	0	N/A
2005	Norfolk & Norwich	Diagnosed elsewhere, treated at Hospital	12	32	7	0	38
2005	Norfolk & Norwich	Total					121
2005	Peterborough	Diagnosed at Hospital, treated at Hospital	22	0	1	0	22
2005	Peterborough	Diagnosed at Hospital, treated elsewhere	5	26	7	0	N/A
2005	Peterborough	Diagnosed elsewhere, treated at Hospital	0	0	0	0	0
2005	Peterborough	Total					22
2005	QEH Kings Lynn	Diagnosed at Hospital, treated at Hospital	3	1	0	0	3
2005	QEH Kings Lynn	Diagnosed at Hospital, treated elsewhere	5	10	4	0	N/A
2005	QEH Kings Lynn	Diagnosed elsewhere, treated at Hospital	0	0	0	0	0
2005	QEH Kings Lynn	Total					3
2005	West Suffolk	Diagnosed at Hospital, treated at Hospital	10	0	0	0	10
2005	West Suffolk	Diagnosed at Hospital, treated elsewhere	5	10	2	0	N/A
2005	West Suffolk	Diagnosed elsewhere, treated at Hospital	0	0	0	0	0
2005	West Suffolk	Total					10