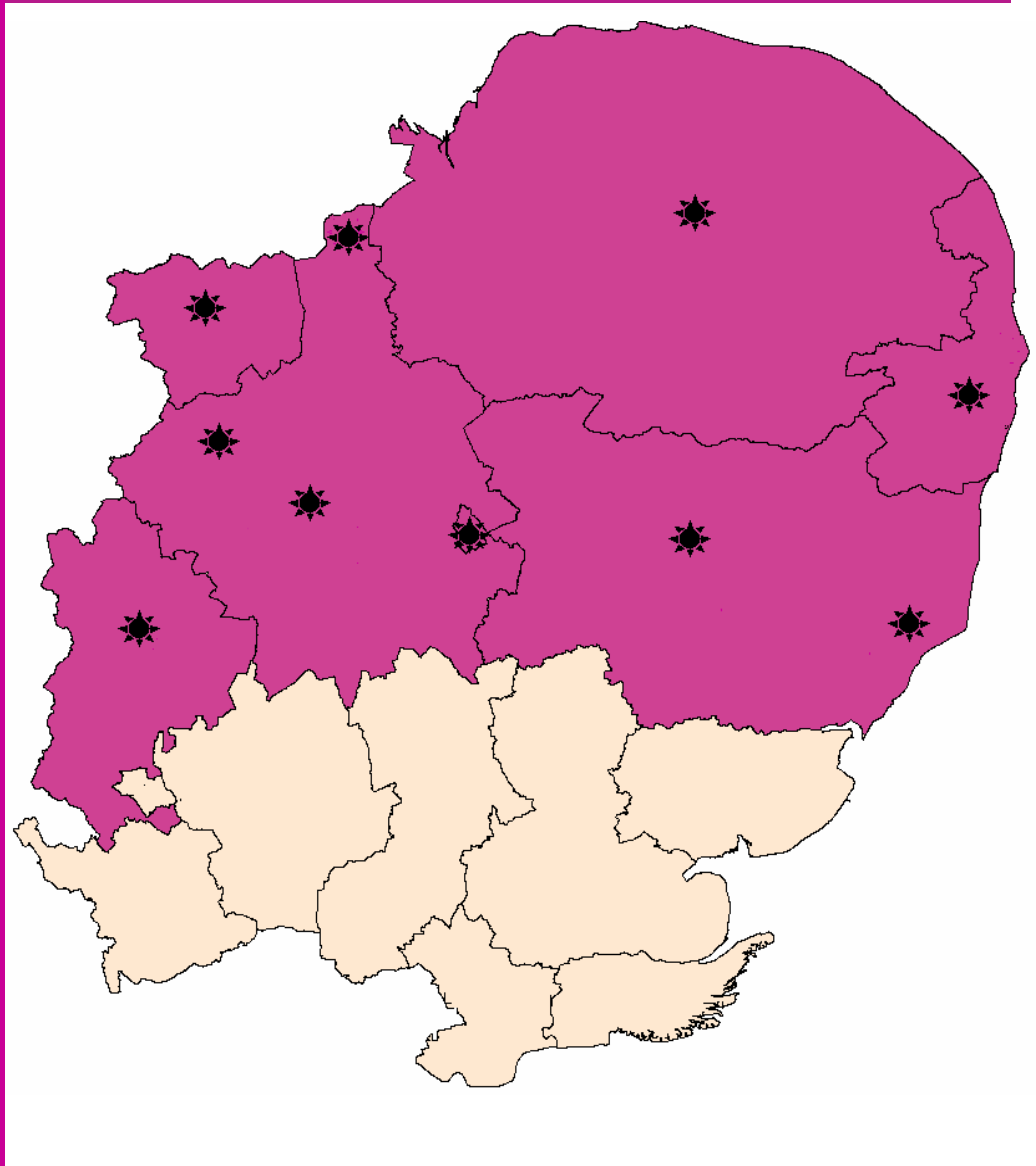


**Skin Cancers diagnosed and treated at hospitals in  
the new Anglia Cancer Network in 2004 and 2005**

# ecric

Fighting cancer with information



**Eastern Cancer Registration &  
Information Centre**

## General Information

The report is based upon the Eastern Cancer Registry and Intelligence Centre (ECRIC) registered data for patients diagnosed in 2001-2005 and for patients receiving initial treatments at, or from, these hospitals during 2004 or 2005. ECRIC records details of all registrable neoplasms and the first six months of treatments for these neoplasms for patients resident in the East of England Government Office Region (by post code) at the date of diagnosis. Data on registration of patients resident in Essex and Hertfordshire before 2005 and in Bedfordshire before 1996 were originally collected by the Thames Cancer Registry.

The registry collects cancer data by calendar year.

## Neoplasm Groupings for this report

In this report neoplasms are grouped as follows:

### ICD 10 codes

C43

C44 and morphology 8090/3

C44 and morphologies other than 8090/3

### ICD 10 sites

Malignant melanoma of the skin

Basal cell carcinoma (BCC) of the skin

Squamous cell carcinoma (SCC) of the skin  
and other Non-melanoma skin cancers

Basal cell carcinomas are registered only in Norfolk, Suffolk and Cambridgeshire (including Peterborough UA), and not in the other three counties and UAs in the region. As around 80% of all non-melanoma skin cancers (ICD10 – C44) are basal cell carcinomas, any comparison of incidence rates of NMSCs across cancer networks would be meaningless.

Non-melanoma skin cancer is rarely given as a cause of death on death certificates, so mortality and survival rates are not reported for these cancers.

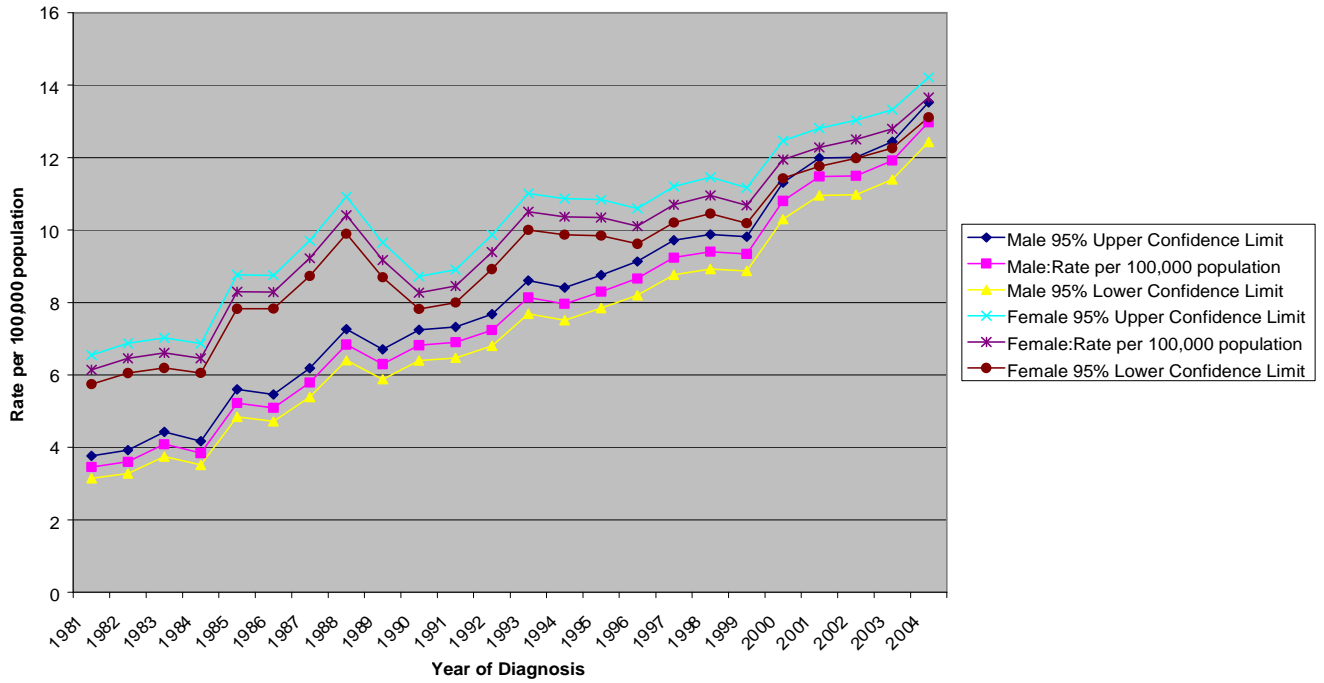
## Diagnoses and Treatments at Other Hospitals

These are included in the numbers for Diagnosed at Hospital, Treated Elsewhere and Diagnosed Elsewhere, Treated at Hospital in the tables in this report.

## Geographic Areas in this report

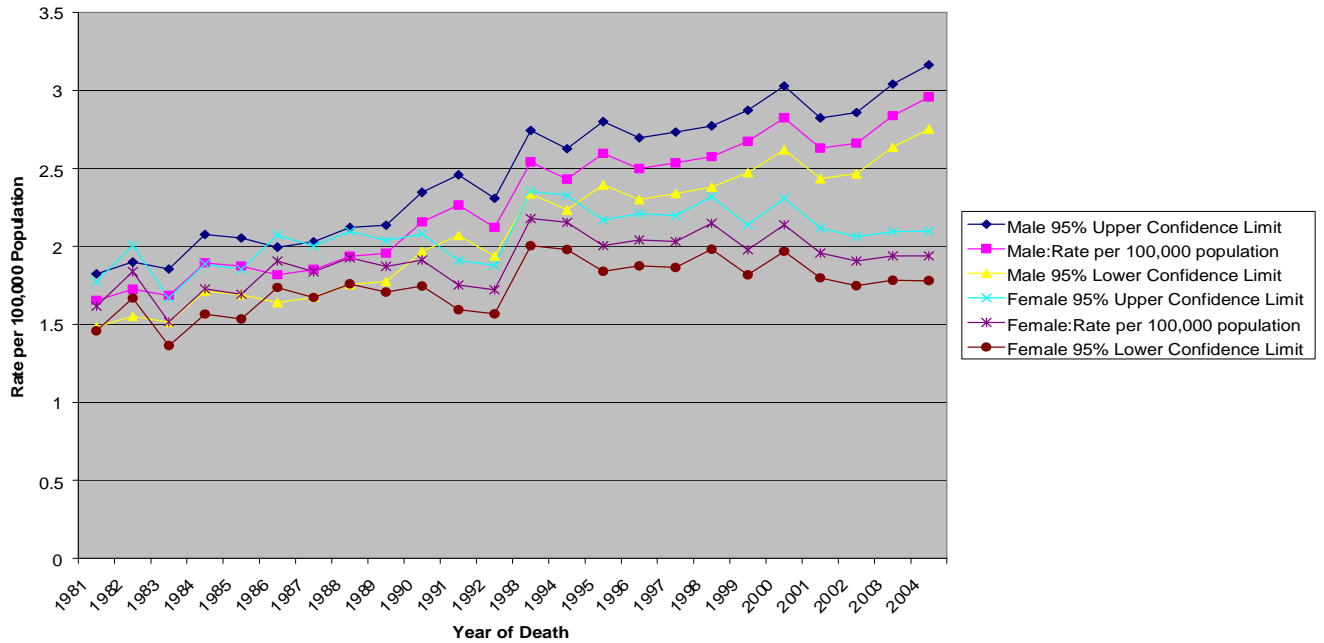
Population data were not available for the new Cancer Network and PCT areas at the time of preparation of this report. The new Anglia Cancer Network is expected to be approximately coterminous with the old Norfolk, Suffolk and Cambridgeshire SHA, so this area is used in some of the analyses. With the current availability of postcode mapping and population data, it was not feasible to produce a fully consistent set of up to date set of area-based reports.

European Age Standardised Incidence Rate for Malignant melanoma in England



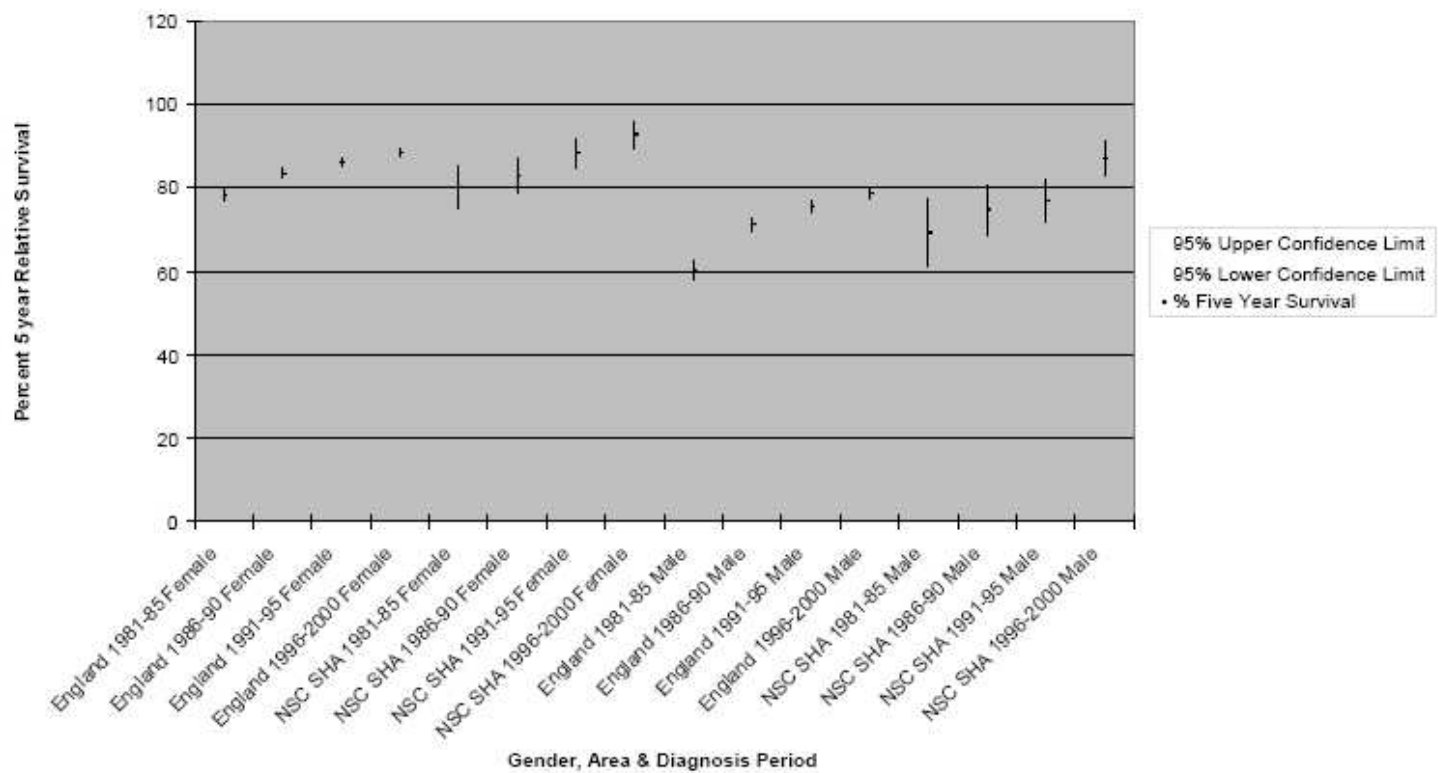
Differences in melanoma incidence rates between genders were not significant at Cancer Network level

European Age Standardised Mortality Rate for Malignant melanoma in England

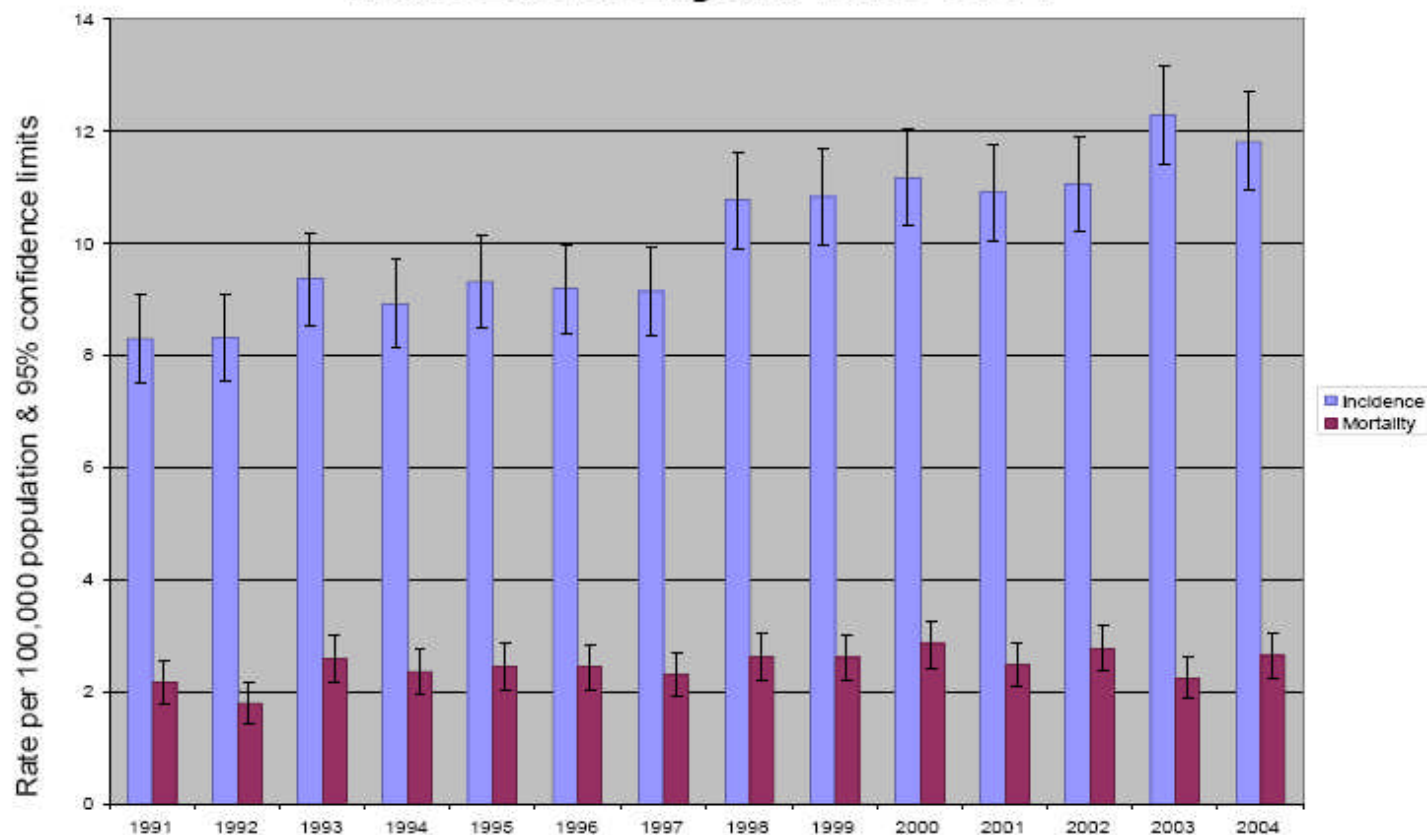


Differences in melanoma mortality rates between genders were not significant at Cancer Network level

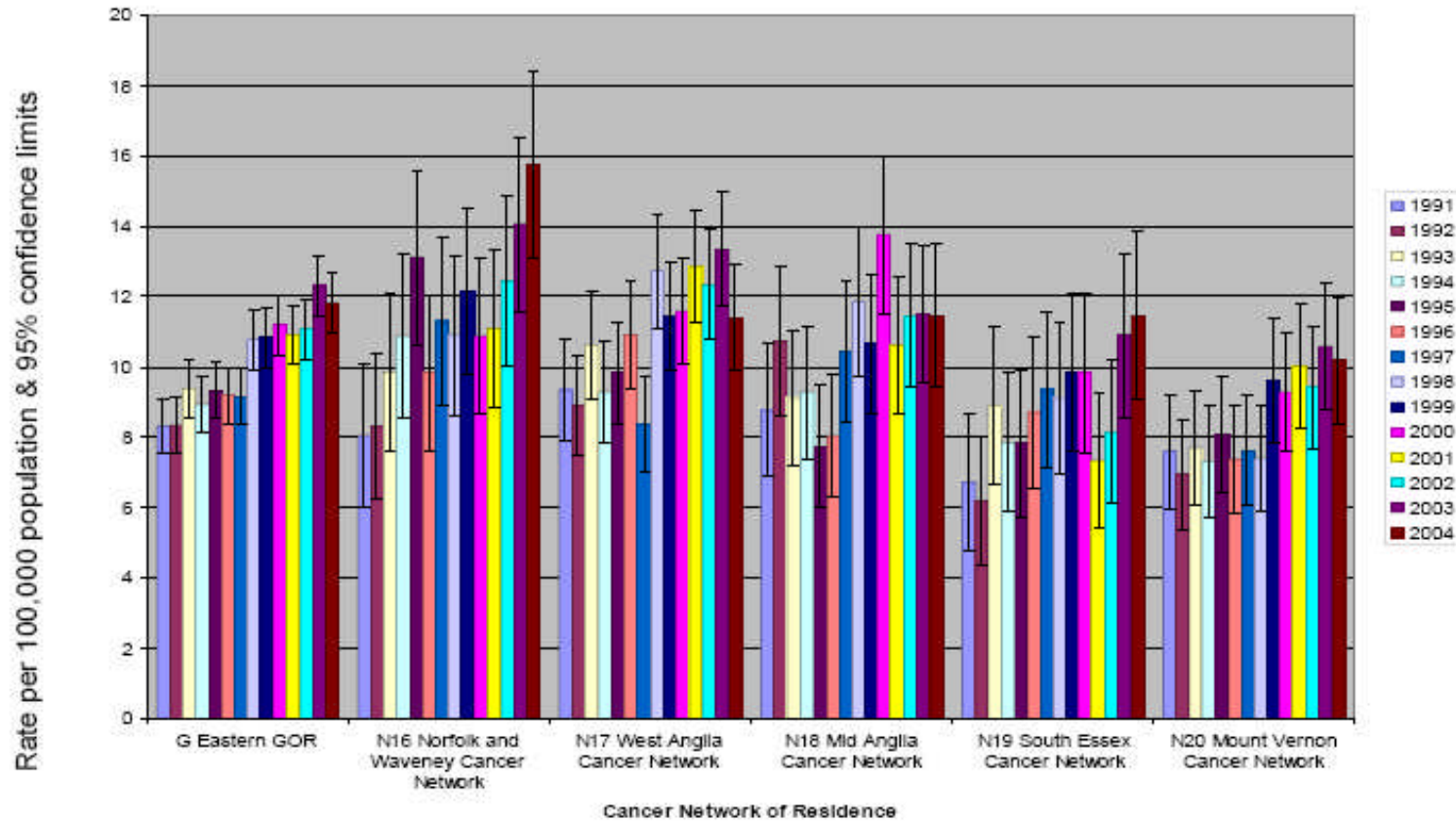
### Malignant Melanoma - Five Year Relative Survival by Diagnosis Cohort



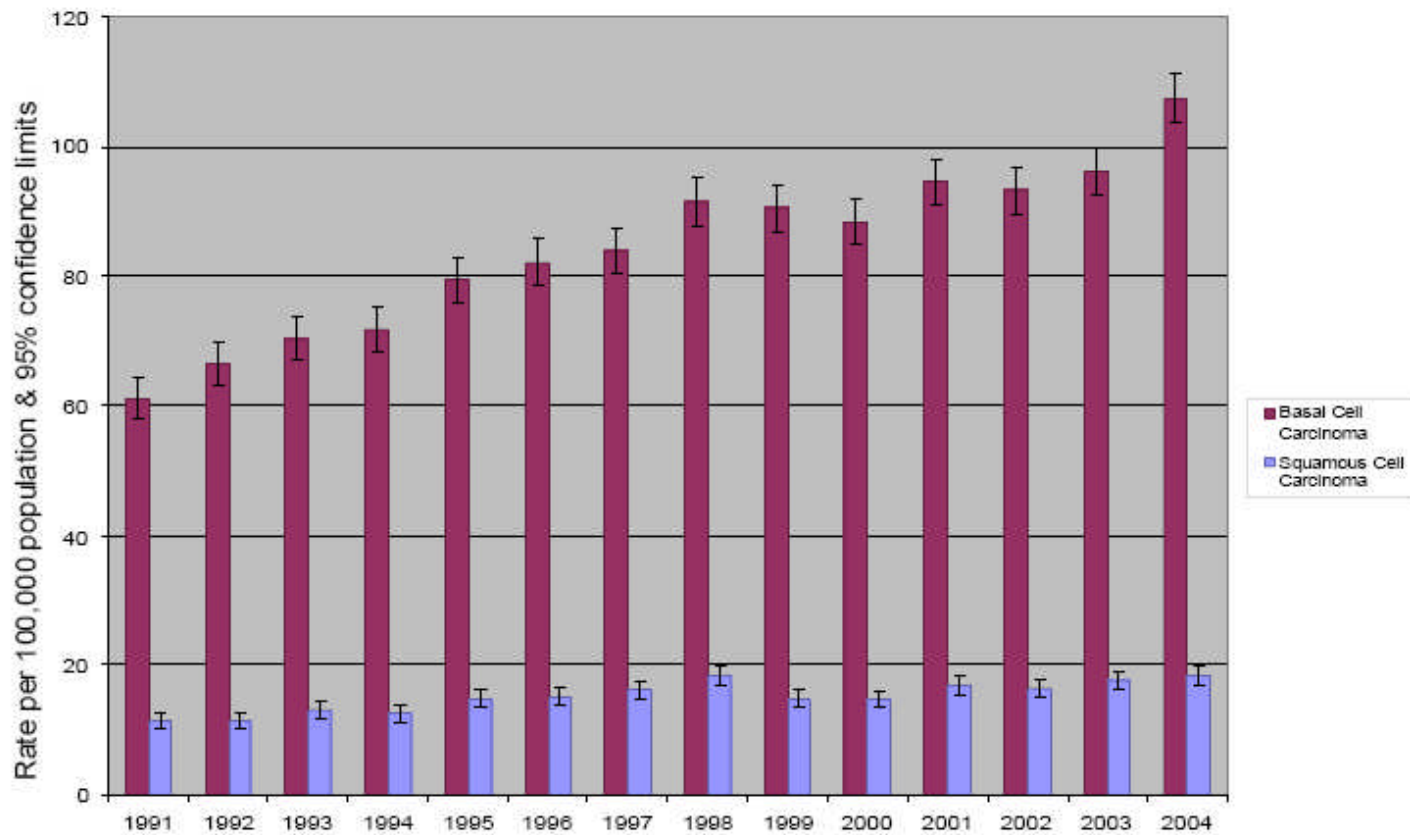
## Malignant melanoma: Age standardised incidence and mortality rates in the East of England 1991-2004



## Malignant melanoma: Age standardised incidence rates in the superseded Eastern Region Cancer Networks 1991-2004



## Non-melanoma skin cancer: Age standardised incidence rates in Norfolk, Suffolk and Cambridgeshire 1991-2004



### Malignant Melanoma of the skin - cases registered by ECRIC in 2000-2005

N.B.: Registration data for 2005 is incomplete as of 30 January 2007

Hospital of diagnosis	No Treatment	Year of Diagnosis					
		2000	2001	2002	2003	2004	2005
Addenbrooke's	No Treatment			1			1
Addenbrooke's	Treated (any hospital)	86	83	86	88	64	72
<b>Addenbrooke's</b>	<b>Total</b>	<b>86</b>	<b>83</b>	<b>87</b>	<b>88</b>	<b>64</b>	<b>73</b>
Bedford	No Treatment						
Bedford	Treated (any hospital)	21	18	23	12	24	23
<b>Bedford</b>	<b>Total</b>	<b>21</b>	<b>18</b>	<b>23</b>	<b>12</b>	<b>24</b>	<b>23</b>
Hinchingbrooke	No Treatment						
Hinchingbrooke	Treated (any hospital)	10	7	20	16	6	14
<b>Hinchingbrooke</b>	<b>Total</b>	<b>10</b>	<b>7</b>	<b>20</b>	<b>16</b>	<b>6</b>	<b>14</b>
Ipswich	No Treatment				1		
Ipswich	Treated (any hospital)	27	25	39	35	24	36
<b>Ipswich</b>	<b>Total</b>	<b>27</b>	<b>25</b>	<b>39</b>	<b>36</b>	<b>24</b>	<b>36</b>
James Paget	No Treatment				1		
James Paget	Treated (any hospital)	18	19	21	38	28	25
<b>James Paget</b>	<b>Total</b>	<b>18</b>	<b>19</b>	<b>21</b>	<b>39</b>	<b>28</b>	<b>25</b>
QEH King's Lynn	No Treatment		1		1		
QEH King's Lynn	Treated (any hospital)	15	21	10	20	21	22
<b>QEH King's Lynn</b>	<b>Total</b>	<b>15</b>	<b>22</b>	<b>10</b>	<b>21</b>	<b>21</b>	<b>22</b>
Norfolk & Norwich <sup>*</sup>	No Treatment			2	1	2	1
Norfolk & Norwich <sup>*</sup>	Treated (any hospital)	56	54	66	86	93	77
<b>Norfolk &amp; Norwich*</b>	<b>Total</b>	<b>56</b>	<b>54</b>	<b>68</b>	<b>87</b>	<b>95</b>	<b>78</b>
Papworth	No Treatment						
Papworth	Treated (any hospital)				1		
<b>Papworth</b>	<b>Total</b>	<b>0</b>	<b>0</b>	<b>0</b>	<b>1</b>	<b>0</b>	<b>0</b>
Peterborough	No Treatment						
Peterborough	Treated (any hospital)	15	20	23	22	21	31
<b>Peterborough</b>	<b>Total</b>	<b>15</b>	<b>20</b>	<b>23</b>	<b>22</b>	<b>21</b>	<b>31</b>
West Suffolk	No Treatment	1					
West Suffolk	Treated (any hospital)	11	28	17	44	43	46
<b>West Suffolk</b>	<b>Total</b>	<b>12</b>	<b>28</b>	<b>17</b>	<b>44</b>	<b>43</b>	<b>46</b>

<sup>\*</sup>Includes Norwich Community Hospital for cases diagnosed 2000 - 2002

## Number of Malignant Melanoma cases treated at hospitals in the new Anglia Cancer Network

Year of Diagnosis	Hospital	Malignant Melanoma cases	Single Patient count of cases having Surgery	Single Patient count of cases having Radio-therapy	Single Patient count of cases having Chemo-therapy	Single Patient count of cases having Other treatments	Single Patient count across all treatments at this hospital
2004	Addenbrookes	Diagnosed at Hospital, treated at Hospital	64	0	0	2	64
2004	Addenbrookes	Diagnosed at Hospital, treated elsewhere	1	0	0	0	N/A
2004	Addenbrookes	Diagnosed elsewhere, treated at Hospital	20	2	2	0	23
<b>2004</b>	<b>Addenbrookes</b>	<b>Total</b>					<b>87</b>
2004	Bedford	Diagnosed at Hospital, treated at Hospital	24	0	0	0	24
2004	Bedford	Diagnosed at Hospital, treated elsewhere	0	1	0	0	N/A
2004	Bedford	Diagnosed elsewhere, treated at Hospital	0	0	0	0	0
<b>2004</b>	<b>Bedford</b>	<b>Total</b>					<b>24</b>
2004	Hinchingbrooke	Diagnosed at Hospital, treated at Hospital	6	0	0	0	6
2004	Hinchingbrooke	Diagnosed at Hospital, treated elsewhere	0	0	0	1	N/A
2004	Hinchingbrooke	Diagnosed elsewhere, treated at Hospital	1	0	0	0	1
<b>2004</b>	<b>Hinchingbrooke</b>	<b>Total</b>					<b>7</b>
2004	Ipswich	Diagnosed at Hospital, treated at Hospital	24	1	0	1	24
2004	Ipswich	Diagnosed at Hospital, treated elsewhere	8	0	0	0	N/A
2004	Ipswich	Diagnosed elsewhere, treated at Hospital	3	0	0	0	3
<b>2004</b>	<b>Ipswich</b>	<b>Total</b>					<b>27</b>
2004	James Paget	Diagnosed at Hospital, treated at Hospital	28	0	0	0	28
2004	James Paget	Diagnosed at Hospital, treated elsewhere	3	0	0	0	N/A
2004	James Paget	Diagnosed elsewhere, treated at Hospital	1	0	0	0	1
<b>2004</b>	<b>James Paget</b>	<b>Total</b>					<b>29</b>
2004	Norfolk & Norwich	Diagnosed at Hospital, treated at Hospital	93	2	0	0	93
2004	Norfolk & Norwich	Diagnosed at Hospital, treated elsewhere	2	0	0	0	N/A
2004	Norfolk & Norwich	Diagnosed elsewhere, treated at Hospital	30	0	0	0	30
<b>2004</b>	<b>Norfolk &amp; Norwich</b>	<b>Total</b>					<b>123</b>
2004	Peterborough	Diagnosed at Hospital, treated at Hospital	21	0	0	0	21
2004	Peterborough	Diagnosed at Hospital, treated elsewhere	3	0	0	0	0
2004	Peterborough	Diagnosed elsewhere, treated at Hospital	1	0	0	0	1
<b>2004</b>	<b>Peterborough</b>	<b>Total</b>					<b>22</b>
2004	QEH Kings Lynn	Diagnosed at Hospital, treated at Hospital	21	0	0	0	21
2004	QEH Kings Lynn	Diagnosed at Hospital, treated elsewhere	1	0	0	0	N/A
2004	QEH Kings Lynn	Diagnosed elsewhere, treated at Hospital	0	0	0	0	0
<b>2004</b>	<b>QEH Kings Lynn</b>	<b>Total</b>					<b>21</b>
2004	West Suffolk	Diagnosed at Hospital, treated at Hospital	43	0	0	1	43
2004	West Suffolk	Diagnosed at Hospital, treated elsewhere	4	0	0	0	N/A
2004	West Suffolk	Diagnosed elsewhere, treated at Hospital	1	0	0	0	1

Number of Malignant Melanoma cases treated at hospitals in the new Anglia Cancer Network							
Year of Diagnosis	Hospital	Malignant Melanoma cases	Single Patient count of cases having Surgery	Single Patient count of cases having Radio-therapy	Single Patient count of cases having Chemo-therapy	Single Patient count of cases having Other treatments	Single Patient count across all treatments at this hospital
2004	Addenbrookes	Diagnosed at Hospital, treated at Hospital	64	0	0	2	64
2004	Addenbrookes	Diagnosed at Hospital, treated elsewhere	1	0	0	0	N/A
2004	Addenbrookes	Diagnosed elsewhere, treated at Hospital	20	2	2	0	23
<b>2004</b>	<b>Addenbrookes</b>	<b>Total</b>					<b>87</b>
2004	Bedford	Diagnosed at Hospital, treated at Hospital	24	0	0	0	24
2004	Bedford	Diagnosed at Hospital, treated elsewhere	0	1	0	0	N/A
2004	Bedford	Diagnosed elsewhere, treated at Hospital	0	0	0	0	0
<b>2004</b>	<b>Bedford</b>	<b>Total</b>					<b>24</b>
2004	Hinchingbrooke	Diagnosed at Hospital, treated at Hospital	6	0	0	0	6
2004	Hinchingbrooke	Diagnosed at Hospital, treated elsewhere	0	0	0	1	N/A
2004	Hinchingbrooke	Diagnosed elsewhere, treated at Hospital	1	0	0	0	1
<b>2004</b>	<b>Hinchingbrooke</b>	<b>Total</b>					<b>7</b>
2004	Ipswich	Diagnosed at Hospital, treated at Hospital	24	1	0	1	24
2004	Ipswich	Diagnosed at Hospital, treated elsewhere	8	0	0	0	N/A
2004	Ipswich	Diagnosed elsewhere, treated at Hospital	3	0	0	0	3
<b>2004</b>	<b>Ipswich</b>	<b>Total</b>					<b>27</b>
2004	James Paget	Diagnosed at Hospital, treated at Hospital	28	0	0	0	28
2004	James Paget	Diagnosed at Hospital, treated elsewhere	3	0	0	0	N/A
2004	James Paget	Diagnosed elsewhere, treated at Hospital	1	0	0	0	1
<b>2004</b>	<b>James Paget</b>	<b>Total</b>					<b>29</b>
2004	Norfolk & Norwich	Diagnosed at Hospital, treated at Hospital	93	2	0	0	93
2004	Norfolk & Norwich	Diagnosed at Hospital, treated elsewhere	2	0	0	0	N/A
2004	Norfolk & Norwich	Diagnosed elsewhere, treated at Hospital	30	0	0	0	30
<b>2004</b>	<b>Norfolk &amp; Norwich</b>	<b>Total</b>					<b>123</b>
2004	Peterborough	Diagnosed at Hospital, treated at Hospital	21	0	0	0	21
2004	Peterborough	Diagnosed at Hospital, treated elsewhere	3	0	0	0	0
2004	Peterborough	Diagnosed elsewhere, treated at Hospital	1	0	0	0	1
<b>2004</b>	<b>Peterborough</b>	<b>Total</b>					<b>22</b>
2004	QEH Kings Lynn	Diagnosed at Hospital, treated at Hospital	21	0	0	0	21
2004	QEH Kings Lynn	Diagnosed at Hospital, treated elsewhere	1	0	0	0	N/A
2004	QEH Kings Lynn	Diagnosed elsewhere, treated at Hospital	0	0	0	0	0
<b>2004</b>	<b>QEH Kings Lynn</b>	<b>Total</b>					<b>21</b>
2004	West Suffolk	Diagnosed at Hospital, treated at Hospital	43	0	0	1	43
2004	West Suffolk	Diagnosed at Hospital, treated elsewhere	4	0	0	0	N/A
2004	West Suffolk	Diagnosed elsewhere, treated at Hospital	1	0	0	0	1
<b>2004</b>	<b>West Suffolk</b>	<b>Total</b>					<b>44</b>

### Basal Cell Carcinoma of the skin - cases registered by ECRIC in 2000-2005

N.B.: Registration data for 2005 is incomplete as of 30 January 2007

BCCs are not registered in Bedfordshire, Essex and Herfordshire

Hospital of diagnosis	No Treatment	Year of Diagnosis					
		2000	2001	2002	2003	2004	2005
Addenbrooke's	No Treatment						
Addenbrooke's	Treated (any hospital)	337	328	322	440	414	614
<b>Addenbrooke's</b>	<b>Total</b>	<b>337</b>	<b>328</b>	<b>322</b>	<b>440</b>	<b>414</b>	<b>614</b>
Bedford	No Treatment						
Bedford	Treated (any hospital)	1			1	1	
<b>Bedford</b>	<b>Total</b>	<b>1</b>	<b>0</b>	<b>0</b>	<b>1</b>	<b>1</b>	<b>0</b>
Hinchingbrooke	No Treatment						
Hinchingbrooke	Treated (any hospital)	124	129	144	127	93	162
<b>Hinchingbrooke</b>	<b>Total</b>	<b>124</b>	<b>129</b>	<b>144</b>	<b>127</b>	<b>93</b>	<b>162</b>
Ipswich	No Treatment	2	5	1	2		1
Ipswich	Treated (any hospital)	232	288	317	298	359	322
<b>Ipswich</b>	<b>Total</b>	<b>234</b>	<b>293</b>	<b>318</b>	<b>300</b>	<b>359</b>	<b>323</b>
James Paget	No Treatment						
James Paget	Treated (any hospital)	247	232	214	242	238	252
<b>James Paget</b>	<b>Total</b>	<b>247</b>	<b>232</b>	<b>214</b>	<b>242</b>	<b>238</b>	<b>252</b>
QEH King's Lynn	No Treatment						
QEH King's Lynn	Treated (any hospital)	204	255	252	193	233	265
<b>QEH King's Lynn</b>	<b>Total</b>	<b>204</b>	<b>255</b>	<b>252</b>	<b>193</b>	<b>233</b>	<b>265</b>
Norfolk & Norwich <sup>*</sup>	No Treatment						
Norfolk & Norwich <sup>*</sup>	Treated (any hospital)	560	539	547	681	784	721
<b>Norfolk &amp; Norwich*</b>	<b>Total</b>	<b>560</b>	<b>539</b>	<b>547</b>	<b>681</b>	<b>784</b>	<b>721</b>
Papworth	No Treatment						
Papworth	Treated (any hospital)				1		
<b>Papworth</b>	<b>Total</b>	<b>0</b>	<b>0</b>	<b>0</b>	<b>1</b>	<b>0</b>	<b>0</b>
Peterborough	No Treatment						
Peterborough	Treated (any hospital)	137	216	214	178	254	320
<b>Peterborough</b>	<b>Total</b>	<b>137</b>	<b>216</b>	<b>214</b>	<b>178</b>	<b>254</b>	<b>320</b>
West Suffolk	No Treatment	1			2	1	
West Suffolk	Treated (any hospital)	170	208	215	212	297	313
<b>West Suffolk</b>	<b>Total</b>	<b>171</b>	<b>208</b>	<b>215</b>	<b>214</b>	<b>298</b>	<b>313</b>

<sup>\*</sup> Includes Norwich Community Hospital for cases diagnosed 2000 - 2002

**Number of Basal Cell Carcinoma of the skin cases  
treated at hospitals in the new Anglia Cancer Network**

BCCs are not registered in Bedfordshire, Essex and Herfordshire

Year of Diagnosis	Hospital	Basal Cell Carcinoma Cases	Single Patient count of cases having Surgery	Single Patient count of cases having Radiotherapy	Single Patient count of cases having Chemotherapy	Single Patient count of cases having Other treatments	Single Patient count across all treatments at this hospital
2004	Addenbrookes	Diagnosed at Hospital, treated at Hospital	409	1	0	10	409
2004	Addenbrookes	Diagnosed at Hospital, treated elsewhere	2	0	0	0	N/A
2004	Addenbrookes	Diagnosed elsewhere, treated at Hospital	21	1	0	0	22
<b>2004</b>	<b>Addenbrookes</b>	<b>Total</b>					<b>431</b>
2004	Hinchingbrooke	Diagnosed at Hospital, treated at Hospital	93	0	0	0	93
2004	Hinchingbrooke	Diagnosed at Hospital, treated elsewhere	1	0	0	0	N/A
2004	Hinchingbrooke	Diagnosed elsewhere, treated at Hospital	1	0	0	0	1
<b>2004</b>	<b>Hinchingbrooke</b>	<b>Total</b>					<b>94</b>
2004	Ipswich	Diagnosed at Hospital, treated at Hospital	346	17	0	2	359
2004	Ipswich	Diagnosed at Hospital, treated elsewhere	7	0	0	0	N/A
2004	Ipswich	Diagnosed elsewhere, treated at Hospital	6	0	0	0	6
<b>2004</b>	<b>Ipswich</b>	<b>Total</b>					<b>365</b>
2004	James Paget	Diagnosed at Hospital, treated at Hospital	238	0	0	0	238
2004	James Paget	Diagnosed at Hospital, treated elsewhere	5	0	0	0	N/A
2004	James Paget	Diagnosed elsewhere, treated at Hospital	1	0	0	0	1
<b>2004</b>	<b>James Paget</b>	<b>Total</b>					<b>239</b>
2004	Norfolk & Norwich	Diagnosed at Hospital, treated at Hospital	783	1	0	0	784
2004	Norfolk & Norwich	Diagnosed at Hospital, treated elsewhere	2	0	0	0	N/A
2004	Norfolk & Norwich	Diagnosed elsewhere, treated at Hospital	38	1	0	0	39
<b>2004</b>	<b>Norfolk &amp; Norwich</b>	<b>Total</b>					<b>823</b>
2004	Peterborough	Diagnosed at Hospital, treated at Hospital	254	0	0	0	254
2004	Peterborough	Diagnosed at Hospital, treated elsewhere	1	0	0	0	N/A
2004	Peterborough	Diagnosed elsewhere, treated at Hospital	6	0	0	0	6
<b>2004</b>	<b>Peterborough</b>	<b>Total</b>					<b>260</b>
2004	QEH Kings Lynn	Diagnosed at Hospital, treated at Hospital	233	0	0	0	233
2004	QEH Kings Lynn	Diagnosed at Hospital, treated elsewhere	3	0	0	0	N/A
2004	QEH Kings Lynn	Diagnosed elsewhere, treated at Hospital	16	0	0	0	16
<b>2004</b>	<b>QEH Kings Lynn</b>	<b>Total</b>					<b>249</b>
2004	West Suffolk	Diagnosed at Hospital, treated at Hospital	296	0	0	2	296
2004	West Suffolk	Diagnosed at Hospital, treated elsewhere	6	1	0	0	N/A
2004	West Suffolk	Diagnosed elsewhere, treated at Hospital	7	0	0	0	7
<b>2004</b>	<b>West Suffolk</b>	<b>Total</b>					<b>303</b>

**Number of Basal Cell Carcinoma of the skin cases  
treated at hospitals in the new Anglia Cancer Network**

BCCs are not registered in Bedfordshire, Essex and Herfordshire  
N.B.: Registration data for 2005 is incomplete as of 30 January 2007

Year of Diagnosis	Hospital	Basal Cell Carcinoma Cases	Single Patient count of cases having Surgery	Single Patient count of cases having Radio-therapy	Single Patient count of cases having Chemo-therapy	Single Patient count of cases having Other treatments	Single Patient count across all treatments at this hospital
2005	Addenbrookes	Diagnosed at Hospital, treated at Hospital	614	0	0	23	614
2005	Addenbrookes	Diagnosed at Hospital, treated elsewhere	1	0	0	0	N/A
2005	Addenbrookes	Diagnosed elsewhere, treated at Hospital	10	0	0	0	10
<b>2005</b>	<b>Addenbrookes</b>	<b>Total</b>					<b>624</b>
2005	Hinchingbrooke	Diagnosed at Hospital, treated at Hospital	162	0	0	0	162
2005	Hinchingbrooke	Diagnosed at Hospital, treated elsewhere	0	0	0	0	N/A
2005	Hinchingbrooke	Diagnosed elsewhere, treated at Hospital	0	0	0	0	0
<b>2005</b>	<b>Hinchingbrooke</b>	<b>Total</b>					<b>162</b>
2005	Ipswich	Diagnosed at Hospital, treated at Hospital	319	3	0	0	322
2005	Ipswich	Diagnosed at Hospital, treated elsewhere	1	0	0	0	N/A
2005	Ipswich	Diagnosed elsewhere, treated at Hospital	9	0	0	0	9
<b>2005</b>	<b>Ipswich</b>	<b>Total</b>					<b>331</b>
2005	James Paget	Diagnosed at Hospital, treated at Hospital	252	0	0	0	252
2005	James Paget	Diagnosed at Hospital, treated elsewhere	2	0	0	0	N/A
2005	James Paget	Diagnosed elsewhere, treated at Hospital	1	0	0	0	1
<b>2005</b>	<b>James Paget</b>	<b>Total</b>					<b>253</b>
2005	Norfolk & Norwich	Diagnosed at Hospital, treated at Hospital	716	0	0	0	716
2005	Norfolk & Norwich	Diagnosed at Hospital, treated elsewhere	4	0	0	0	N/A
2005	Norfolk & Norwich	Diagnosed elsewhere, treated at Hospital	25	0	0	0	25
<b>2005</b>	<b>Norfolk &amp; Norwich</b>	<b>Total</b>					<b>741</b>
2005	Peterborough	Diagnosed at Hospital, treated at Hospital	320	0	0	0	320
2005	Peterborough	Diagnosed at Hospital, treated elsewhere	0	0	0	0	N/A
2005	Peterborough	Diagnosed elsewhere, treated at Hospital	5	0	0	0	5
<b>2005</b>	<b>Peterborough</b>	<b>Total</b>					<b>325</b>
2005	QEH Kings Lynn	Diagnosed at Hospital, treated at Hospital	265	0	0	0	265
2005	QEH Kings Lynn	Diagnosed at Hospital, treated elsewhere	1	0	0	0	N/A
2005	QEH Kings Lynn	Diagnosed elsewhere, treated at Hospital	1	0	0	0	1
<b>2005</b>	<b>QEH Kings Lynn</b>	<b>Total</b>					<b>266</b>
2005	West Suffolk	Diagnosed at Hospital, treated at Hospital	313	0	0	2	313
2005	West Suffolk	Diagnosed at Hospital, treated elsewhere	6	0	0	0	N/A
2005	West Suffolk	Diagnosed elsewhere, treated at Hospital	3	0	0	0	3
<b>2005</b>	<b>West Suffolk</b>	<b>Total</b>					<b>316</b>

**Squamous Cell Carcinoma of the skin and other Non-melanoma skin cancers  
(excluding BCC) - cases registered by ECRIC in 2000-2005**

N.B.: Registration data for 2005 is incomplete as of 30 January 2007

Hospital of diagnosis	No Treatment	Year of Diagnosis					
		2000	2001	2002	2003	2004	2005
Addenbrooke's	No Treatment				1		
Addenbrooke's	Treated (any hospital)	105	79	134	144	154	186
<b>Addenbrooke's</b>	<b>Total</b>	<b>105</b>	<b>79</b>	<b>134</b>	<b>145</b>	<b>154</b>	<b>186</b>
Bedford	No Treatment				1		
Bedford	Treated (any hospital)						
<b>Bedford</b>	<b>Total</b>	<b>0</b>	<b>0</b>	<b>0</b>	<b>1</b>	<b>0</b>	<b>0</b>
Hinchingbrooke	No Treatment						
Hinchingbrooke	Treated (any hospital)	12	25	30	43	22	33
<b>Hinchingbrooke</b>	<b>Total</b>	<b>12</b>	<b>25</b>	<b>30</b>	<b>43</b>	<b>22</b>	<b>33</b>
Ipswich	No Treatment			1	1		
Ipswich	Treated (any hospital)	55	64	65	77	84	91
<b>Ipswich</b>	<b>Total</b>	<b>55</b>	<b>64</b>	<b>66</b>	<b>78</b>	<b>84</b>	<b>91</b>
James Paget	No Treatment		1				
James Paget	Treated (any hospital)	72	67	61	66	61	46
<b>James Paget</b>	<b>Total</b>	<b>72</b>	<b>68</b>	<b>61</b>	<b>66</b>	<b>61</b>	<b>46</b>
QEH King's Lynn	No Treatment	1					
QEH King's Lynn	Treated (any hospital)	25	57	49	57	51	68
<b>QEH King's Lynn</b>	<b>Total</b>	<b>26</b>	<b>57</b>	<b>49</b>	<b>57</b>	<b>51</b>	<b>68</b>
Norfolk & Norwich <sup>*</sup>	No Treatment	1			1		
Norfolk & Norwich <sup>*</sup>	Treated (any hospital)	145	165	154	167	163	172
<b>Norfolk &amp; Norwich*</b>	<b>Total</b>	<b>146</b>	<b>165</b>	<b>154</b>	<b>168</b>	<b>163</b>	<b>172</b>
Papworth	No Treatment						
Papworth	Treated (any hospital)						
<b>Papworth</b>	<b>Total</b>	<b>0</b>	<b>0</b>	<b>0</b>	<b>0</b>	<b>0</b>	<b>0</b>
Peterborough	No Treatment						
Peterborough	Treated (any hospital)	43	35	31	38	50	65
<b>Peterborough</b>	<b>Total</b>	<b>43</b>	<b>35</b>	<b>31</b>	<b>38</b>	<b>50</b>	<b>65</b>
West Suffolk	No Treatment	1					
West Suffolk	Treated (any hospital)	26	70	38	62	42	52
<b>West Suffolk</b>	<b>Total</b>	<b>27</b>	<b>70</b>	<b>38</b>	<b>62</b>	<b>42</b>	<b>52</b>

<sup>\*</sup> Includes Norwich Community Hospital for cases diagnosed 2000 - 2002

**Number of Squamous Cell Carcinoma of the skin and other Non-melanoma skin cancer  
(excluding BCC) - cases treated at hospitals in the new Anglia Cancer Network**

Year of Diagnosis	Hospital	Squamous Cell Carcinoma and other NMSC (excluding BCC) Cases	Single Patient count of cases having Surgery	Single Patient count of cases having Radiotherapy	Single Patient count of cases having Chemotherapy	Single Patient count of cases having Other treatments	Single Patient count across all treatments at this hospital
2004	Addenbrookes	Diagnosed at Hospital, treated at Hospital	151	1	1	0	151
2004	Addenbrookes	Diagnosed at Hospital, treated elsewhere	2	0	0	0	N/A
2004	Addenbrookes	Diagnosed elsewhere, treated at Hospital	9	4	2	0	13
<b>2004</b>	<b>Addenbrookes</b>	<b>Total</b>					<b>164</b>
2004	Bedford	Diagnosed at Hospital, treated at Hospital	53	0	0	0	53
2004	Bedford	Diagnosed at Hospital, treated elsewhere	0	1	0	0	N/A
2004	Bedford	Diagnosed elsewhere, treated at Hospital	0	0	0	0	0
<b>2004</b>	<b>Bedford</b>	<b>Total</b>					<b>53</b>
2004	Hinchingbrooke	Diagnosed at Hospital, treated at Hospital	22	0	0	0	22
2004	Hinchingbrooke	Diagnosed at Hospital, treated elsewhere	1	0	0	0	N/A
2004	Hinchingbrooke	Diagnosed elsewhere, treated at Hospital	0	0	0	0	0
<b>2004</b>	<b>Hinchingbrooke</b>	<b>Total</b>					<b>22</b>
2004	Ipswich	Diagnosed at Hospital, treated at Hospital	84	3	0	0	84
2004	Ipswich	Diagnosed at Hospital, treated elsewhere	3	1	1	0	N/A
2004	Ipswich	Diagnosed elsewhere, treated at Hospital	5	1	0	0	6
<b>2004</b>	<b>Ipswich</b>	<b>Total</b>					<b>90</b>
2004	James Paget	Diagnosed at Hospital, treated at Hospital	61	0	0	0	61
2004	James Paget	Diagnosed at Hospital, treated elsewhere	3	0	0	0	N/A
2004	James Paget	Diagnosed elsewhere, treated at Hospital	0	0	0	0	0
<b>2004</b>	<b>James Paget</b>	<b>Total</b>					<b>61</b>
2004	Norfolk & Norwich	Diagnosed at Hospital, treated at Hospital	162	4	0	0	163
2004	Norfolk & Norwich	Diagnosed at Hospital, treated elsewhere	1	0	0	0	N/A
2004	Norfolk & Norwich	Diagnosed elsewhere, treated at Hospital	20	0	1	0	20
<b>2004</b>	<b>Norfolk &amp; Norwich</b>	<b>Total</b>					<b>183</b>
2004	Peterborough	Diagnosed at Hospital, treated at Hospital	49	0	0	1	50
2004	Peterborough	Diagnosed at Hospital, treated elsewhere	2	1	0	0	N/A
2004	Peterborough	Diagnosed elsewhere, treated at Hospital	3	0	0	0	3
<b>2004</b>	<b>Peterborough</b>	<b>Total</b>					<b>53</b>
2004	QEH Kings Lynn	Diagnosed at Hospital, treated at Hospital	51	0	0	0	51
2004	QEH Kings Lynn	Diagnosed at Hospital, treated elsewhere	2	1	2	0	N/A
2004	QEH Kings Lynn	Diagnosed elsewhere, treated at Hospital	3	0	0	0	3
<b>2004</b>	<b>QEH Kings Lynn</b>	<b>Total</b>					<b>54</b>
2004	West Suffolk	Diagnosed at Hospital, treated at Hospital	42	0	0	0	42
2004	West Suffolk	Diagnosed at Hospital, treated elsewhere	1	0	0	0	N/A
2004	West Suffolk	Diagnosed elsewhere, treated at Hospital	3	0	0	0	3
<b>2004</b>	<b>West Suffolk</b>	<b>Total</b>					<b>45</b>

**Number of Squamous Cell Carcinoma of the skin and other Non-melanoma skin cancer  
(excluding BCC) - cases treated at hospitals in the new Anglia Cancer Network**

N.B.: Registration data for 2005 is incomplete as of 30 January 2007

Year of Diagnosis	Hospital	Squamous Cell Carcinoma and other NMSC (excluding BCC) Cases	Single Patient count of cases having Surgery	Single Patient count of cases having Radio-therapy	Single Patient count of cases having Chemo-therapy	Single Patient count of cases having Other treatments	Single Patient count across all treatments at this hospital
2005	Addenbrookes	Diagnosed at Hospital, treated at Hospital	185	5	0	4	186
2005	Addenbrookes	Diagnosed at Hospital, treated elsewhere	0	0	0	0	N/A
2005	Addenbrookes	Diagnosed elsewhere, treated at Hospital	8	3	1	0	9
<b>2005</b>	<b>Addenbrookes</b>	<b>Total</b>					<b>195</b>
2005	Bedford	Diagnosed at Hospital, treated at Hospital	52	0	0	0	52
2005	Bedford	Diagnosed at Hospital, treated elsewhere	0	1	1	0	N/A
2005	Bedford	Diagnosed elsewhere, treated at Hospital	0	0	0	0	0
<b>2005</b>	<b>Bedford</b>	<b>Total</b>					<b>52</b>
2005	Hinchingbrooke	Diagnosed at Hospital, treated at Hospital	33	0	0	0	33
2005	Hinchingbrooke	Diagnosed at Hospital, treated elsewhere	0	0	0	0	N/A
2005	Hinchingbrooke	Diagnosed elsewhere, treated at Hospital	0	0	0	0	0
<b>2005</b>	<b>Hinchingbrooke</b>	<b>Total</b>					<b>33</b>
2005	Ipswich	Diagnosed at Hospital, treated at Hospital	89	2	0	0	91
2005	Ipswich	Diagnosed at Hospital, treated elsewhere	1	0	0	0	N/A
2005	Ipswich	Diagnosed elsewhere, treated at Hospital	1	0	0	0	1
<b>2005</b>	<b>Ipswich</b>	<b>Total</b>					<b>92</b>
2005	James Paget	Diagnosed at Hospital, treated at Hospital	46	0	0	0	46
2005	James Paget	Diagnosed at Hospital, treated elsewhere	1	0	0	0	N/A
2005	James Paget	Diagnosed elsewhere, treated at Hospital	0	0	0	0	0
<b>2005</b>	<b>James Paget</b>	<b>Total</b>					<b>46</b>
2005	Norfolk & Norwich	Diagnosed at Hospital, treated at Hospital	171	2	0	0	171
2005	Norfolk & Norwich	Diagnosed at Hospital, treated elsewhere	1	0	0	0	N/A
2005	Norfolk & Norwich	Diagnosed elsewhere, treated at Hospital	11	0	0	0	11
<b>2005</b>	<b>Norfolk &amp; Norwich</b>	<b>Total</b>					<b>182</b>
2005	Peterborough	Diagnosed at Hospital, treated at Hospital	65	0	0	0	65
2005	Peterborough	Diagnosed at Hospital, treated elsewhere	0	0	0	0	N/A
2005	Peterborough	Diagnosed elsewhere, treated at Hospital	1	0	0	0	1
<b>2005</b>	<b>Peterborough</b>	<b>Total</b>					<b>66</b>
2005	QEH Kings Lynn	Diagnosed at Hospital, treated at Hospital	68	0	0	0	68
2005	QEH Kings Lynn	Diagnosed at Hospital, treated elsewhere	4	0	0	0	N/A
2005	QEH Kings Lynn	Diagnosed elsewhere, treated at Hospital	2	0	0	0	2
<b>2005</b>	<b>QEH Kings Lynn</b>	<b>Total</b>					<b>70</b>
2005	West Suffolk	Diagnosed at Hospital, treated at Hospital	51	0	0	0	51
2005	West Suffolk	Diagnosed at Hospital, treated elsewhere	3	0	0	0	0
2005	West Suffolk	Diagnosed elsewhere, treated at Hospital	1	0	0	0	1
<b>2005</b>	<b>West Suffolk</b>	<b>Total</b>					<b>52</b>